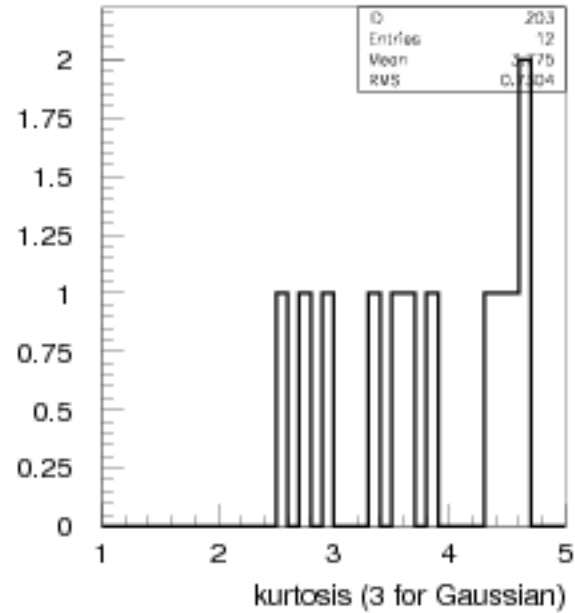
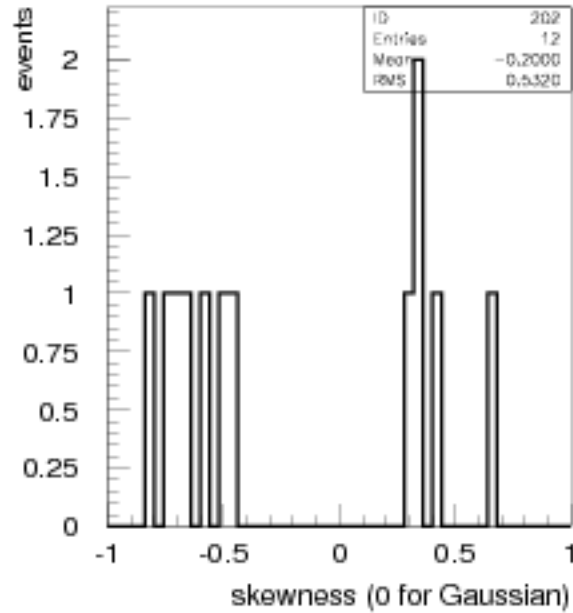
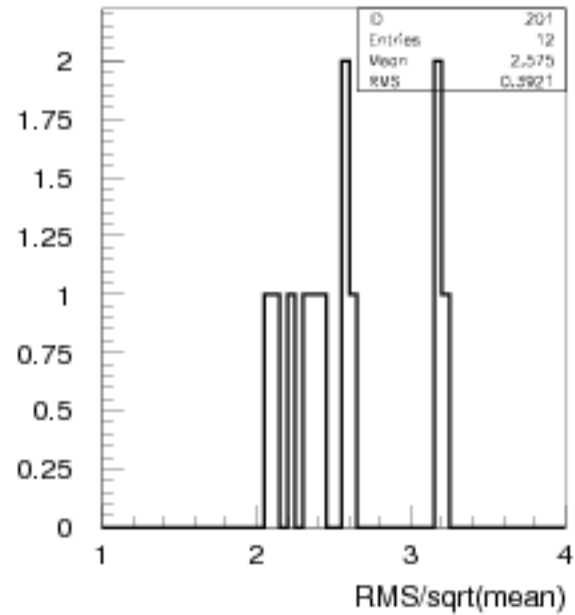
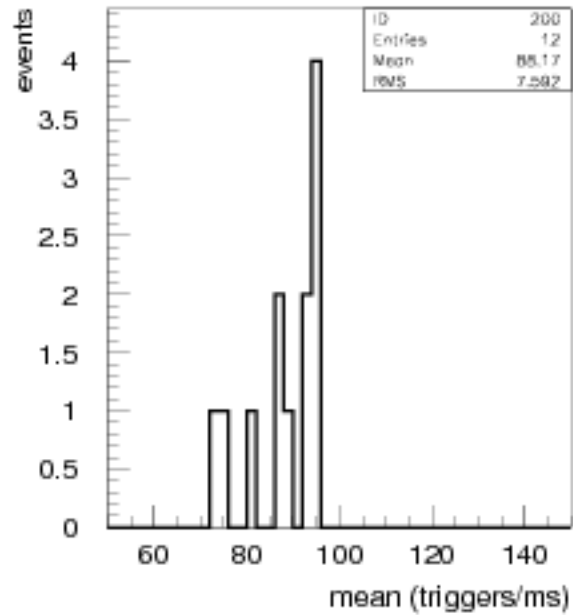
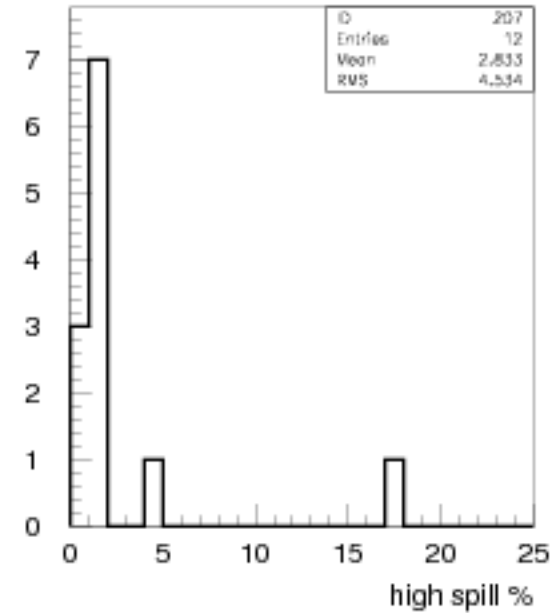
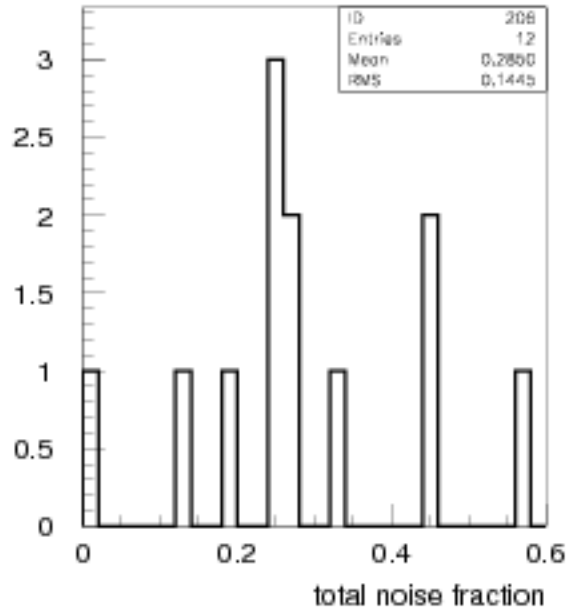
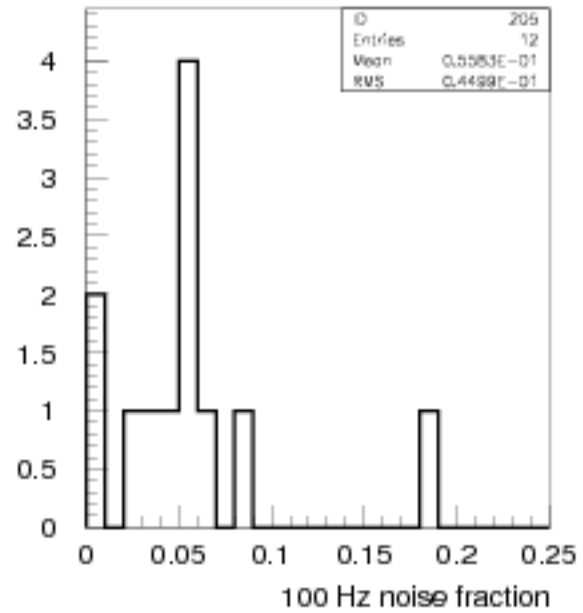
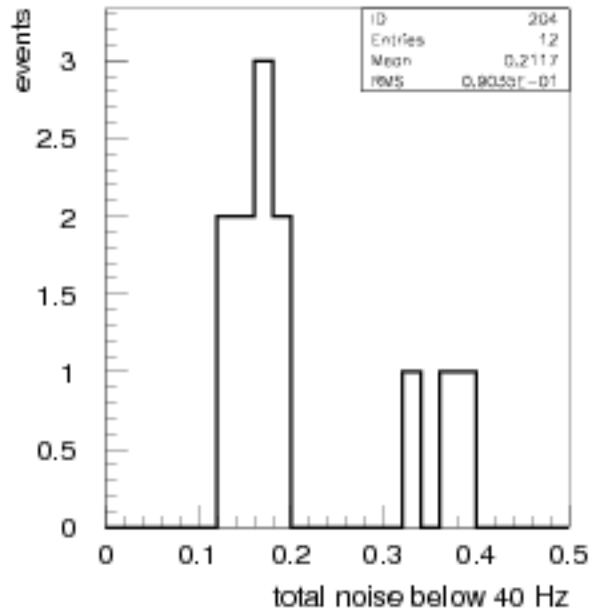


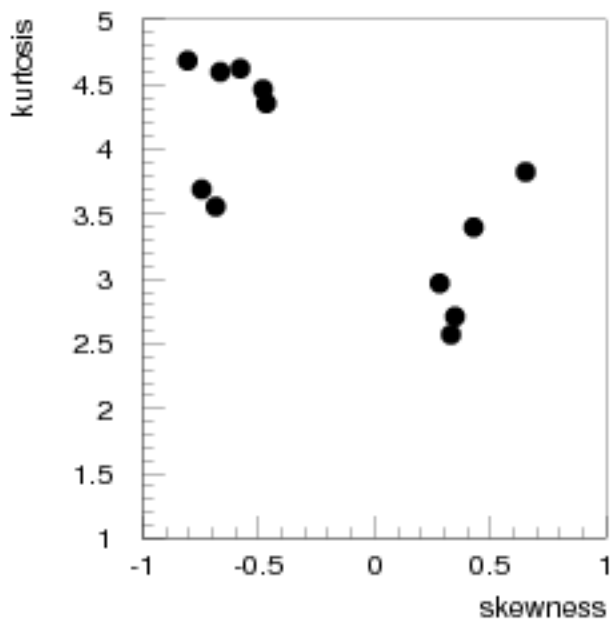
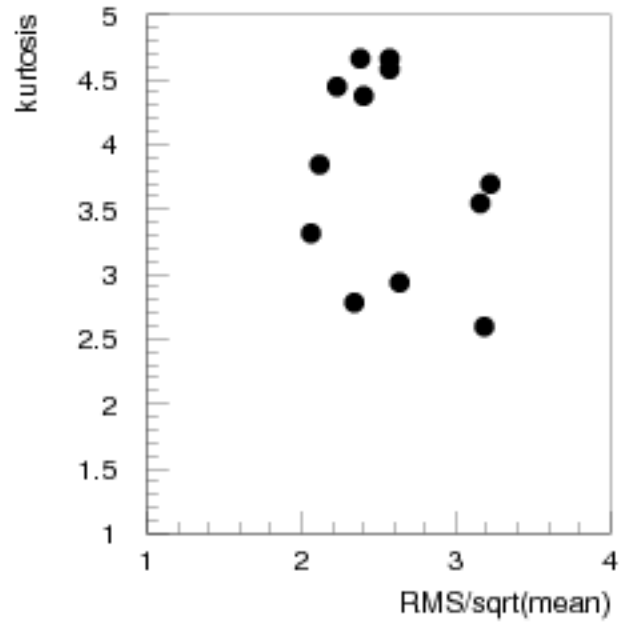
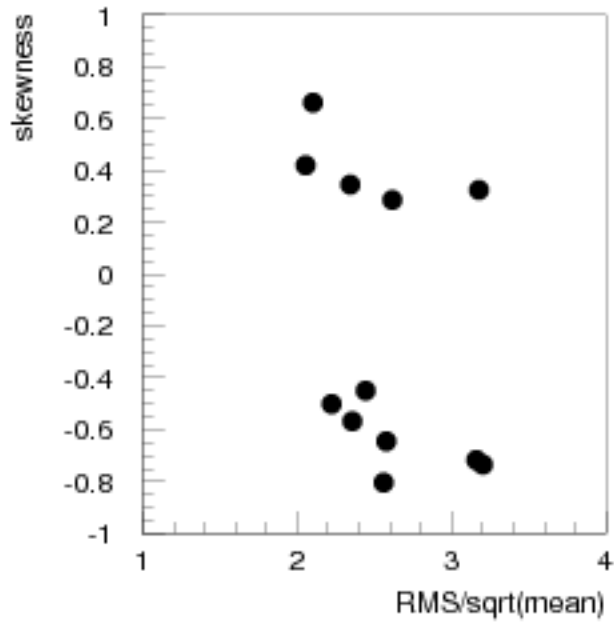
Spill statistics (from 1.5 - 5.5 secs spill time, 1 ms interval)



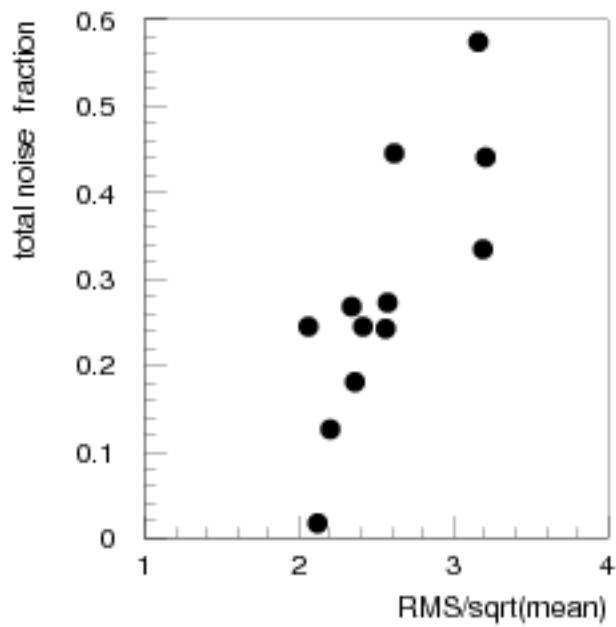
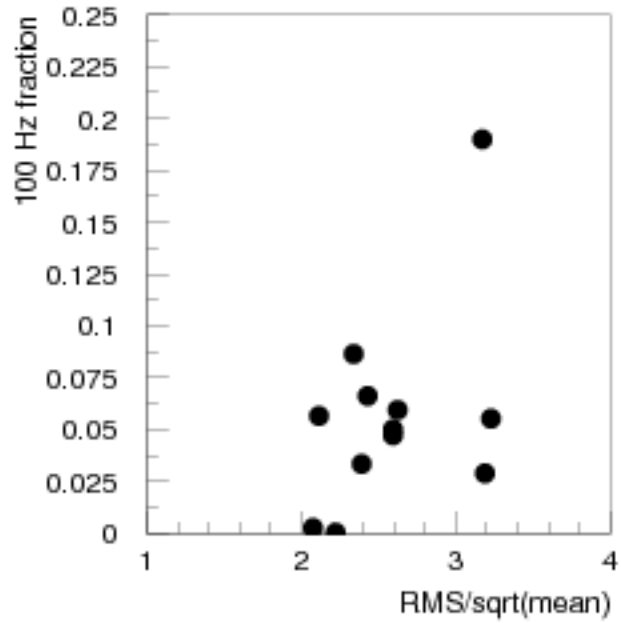
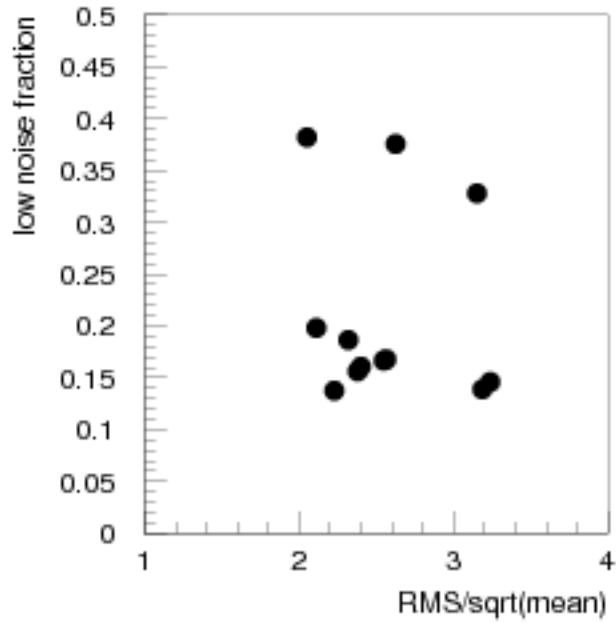
noise fractions, high spill %



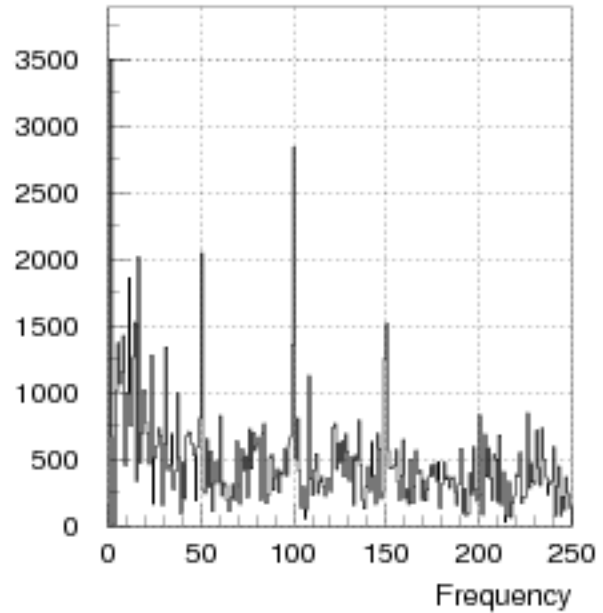
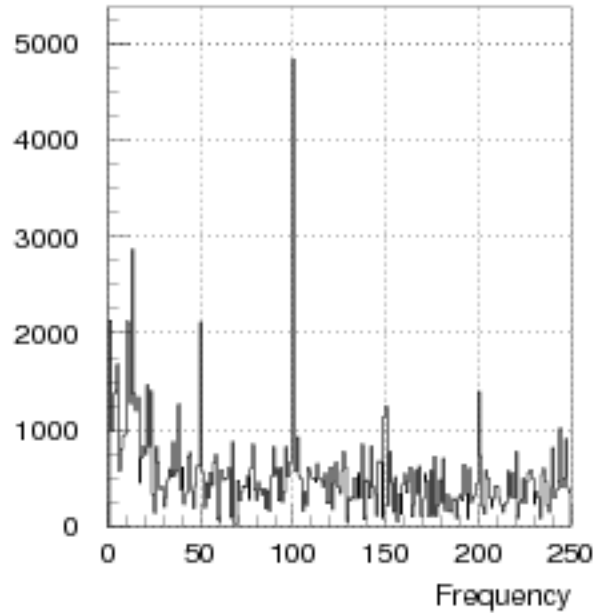
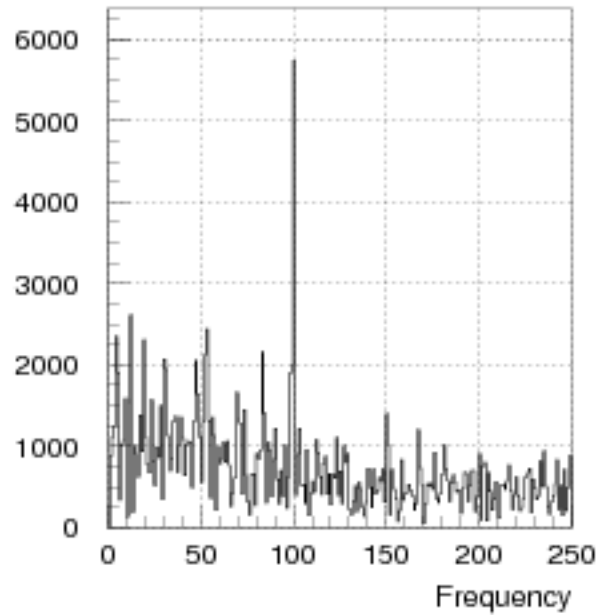
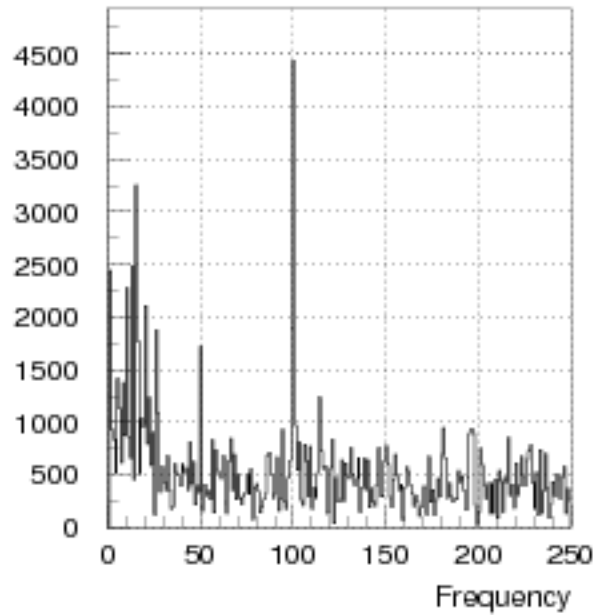
noise fractions, high spill %



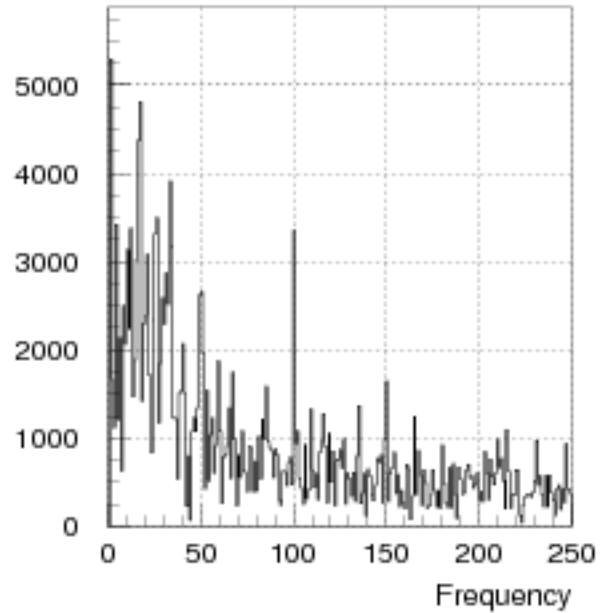
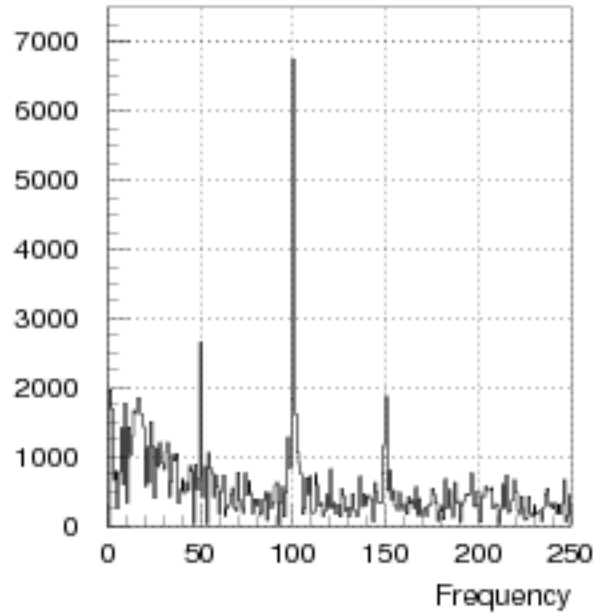
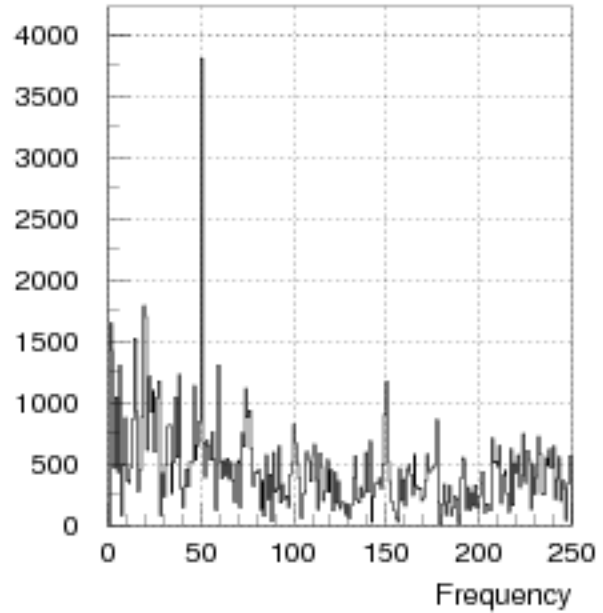
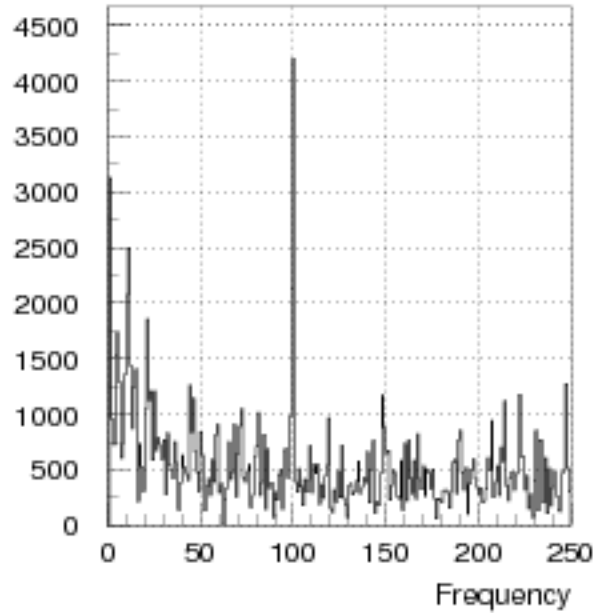
noise fractions, high spill %



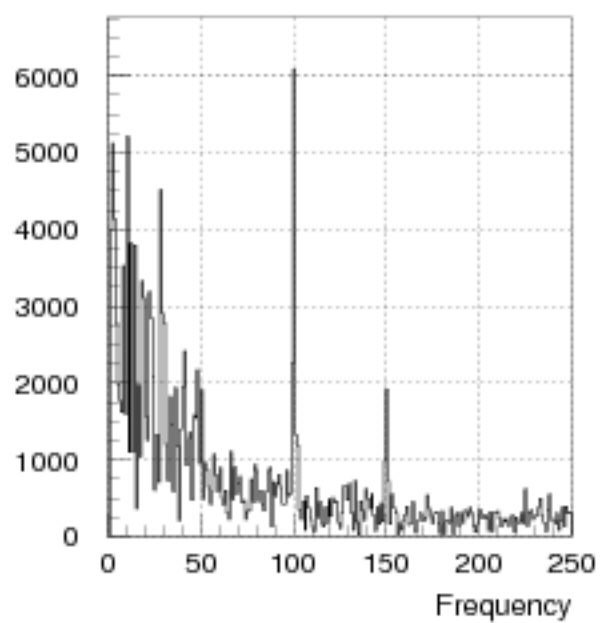
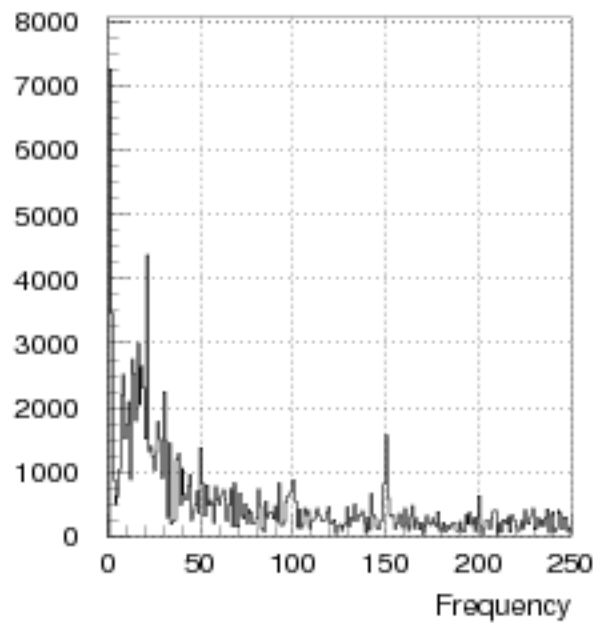
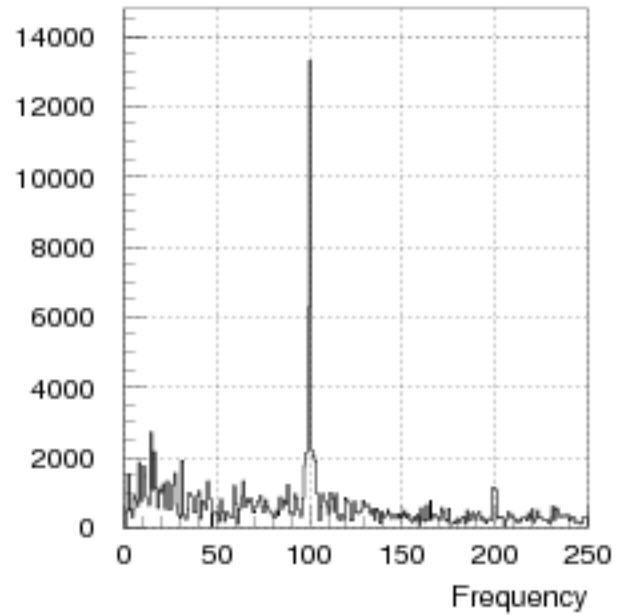
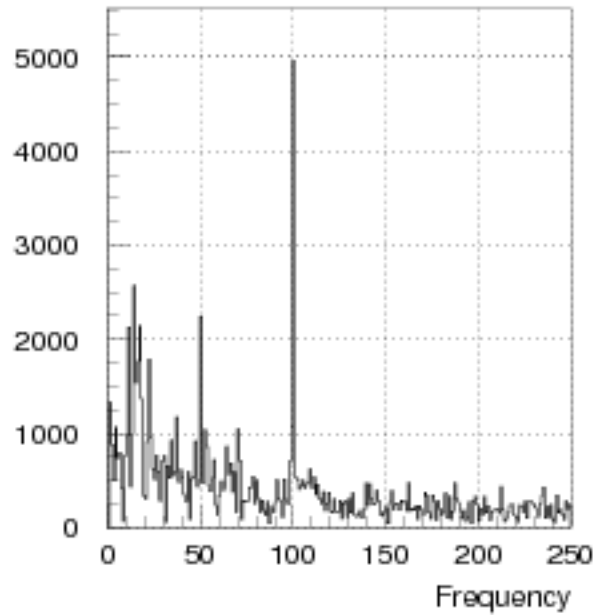
Spill Frequency Analysis from Periodograms (1.5 - 2.5 secs)



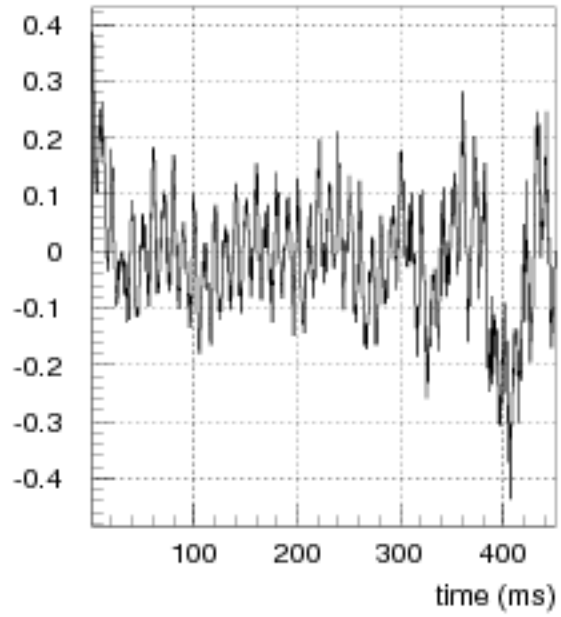
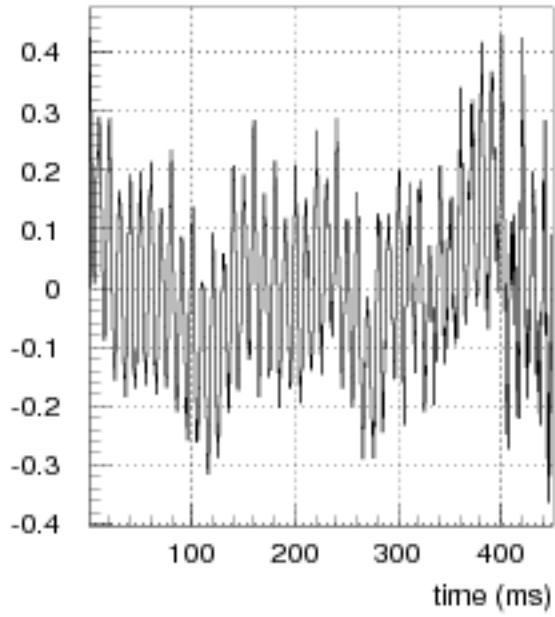
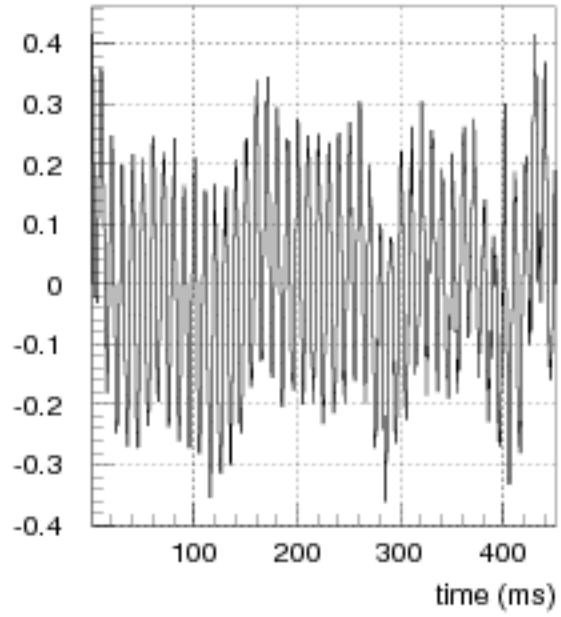
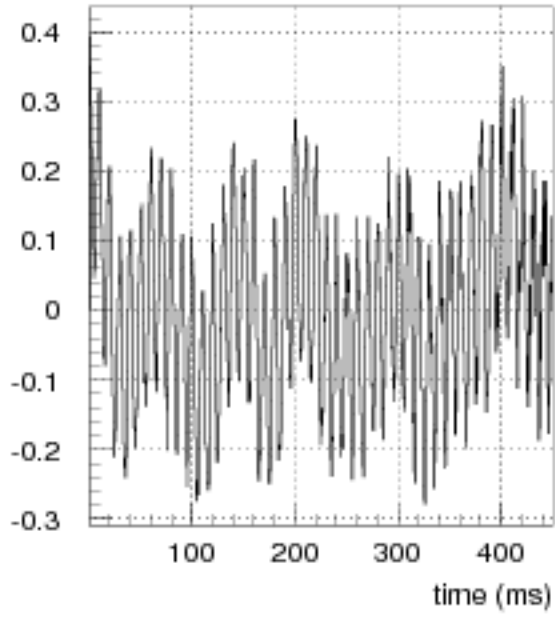
Spill Frequency Analysis from Periodograms (1.5 - 2.5 secs)



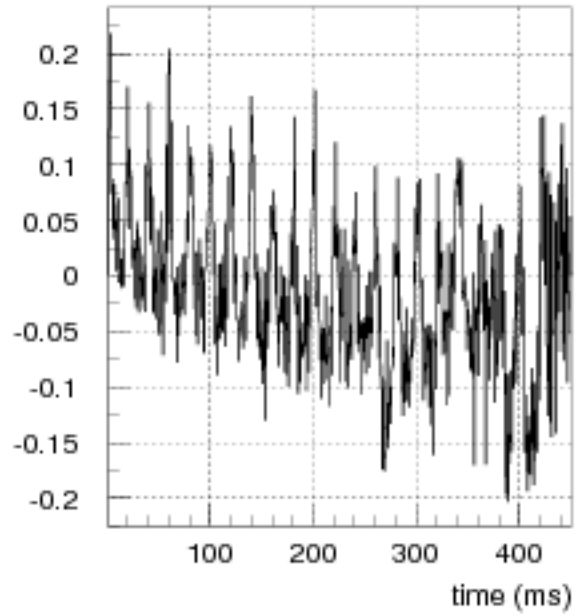
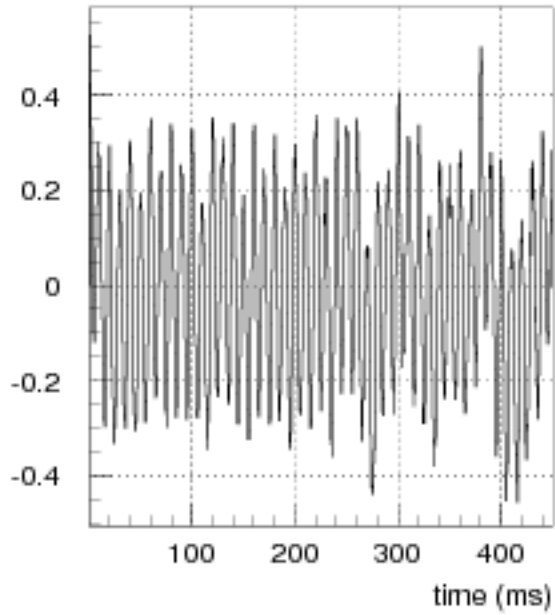
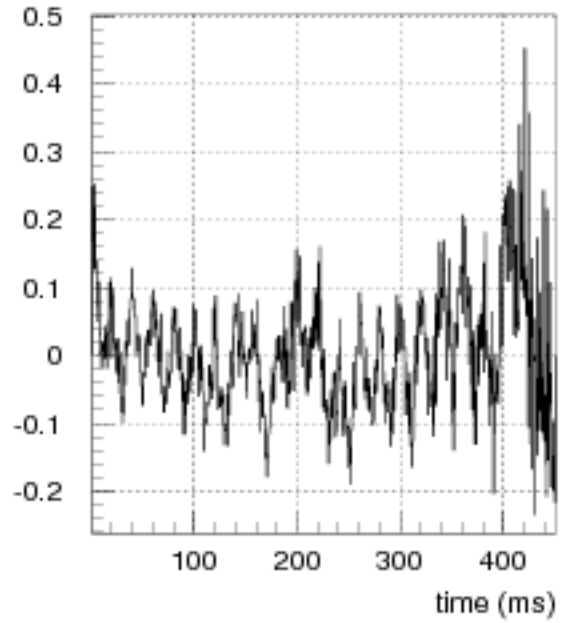
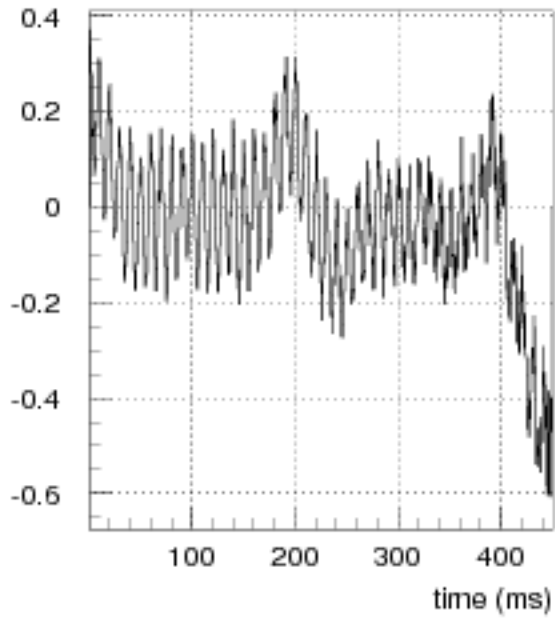
Spill Frequency Analysis from Periodograms (1.5 - 2.5 secs)



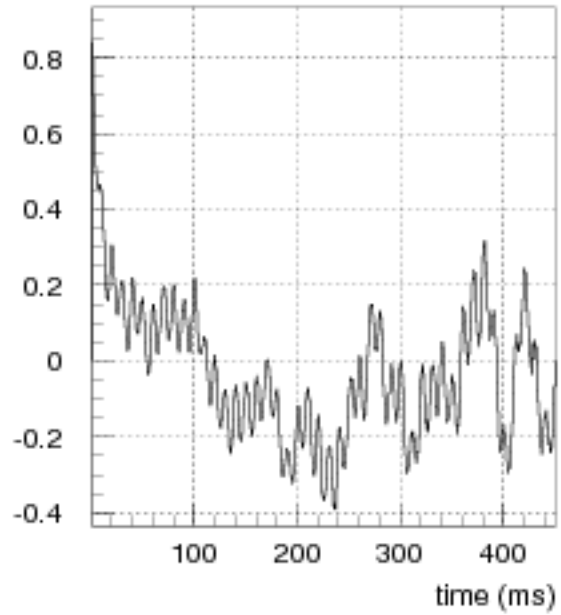
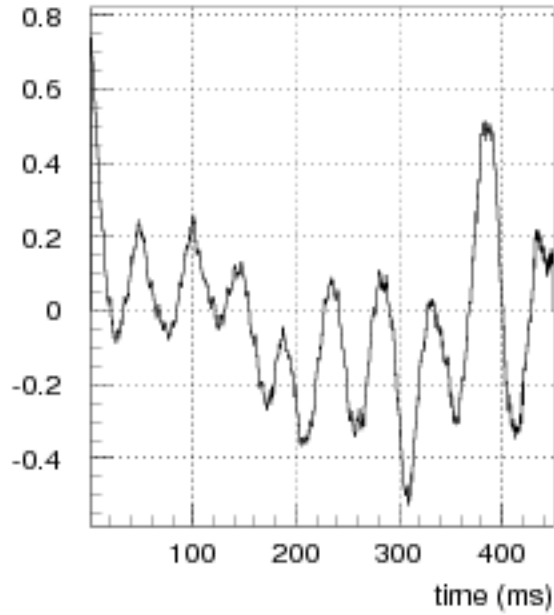
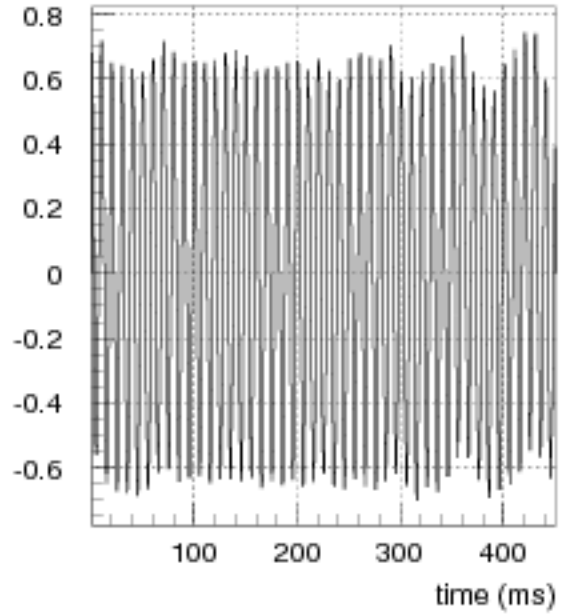
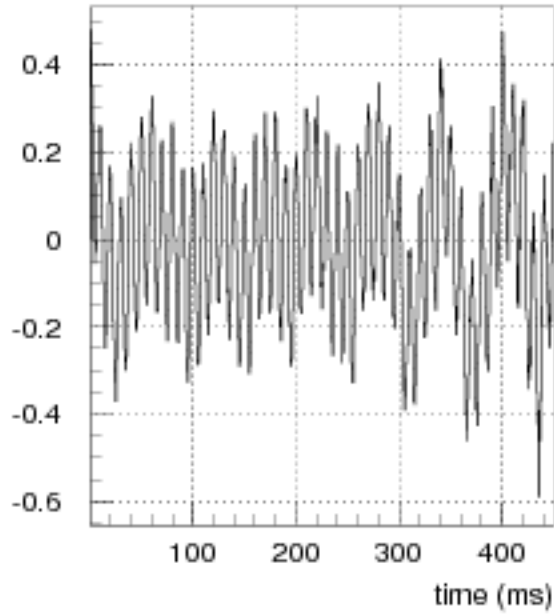
Correlogram



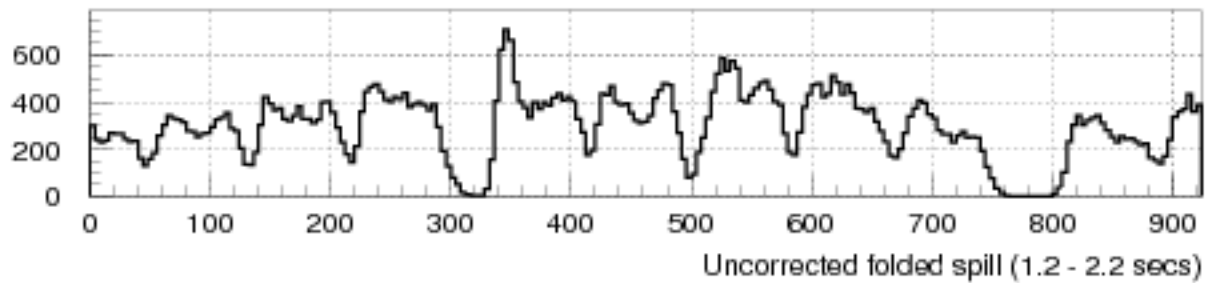
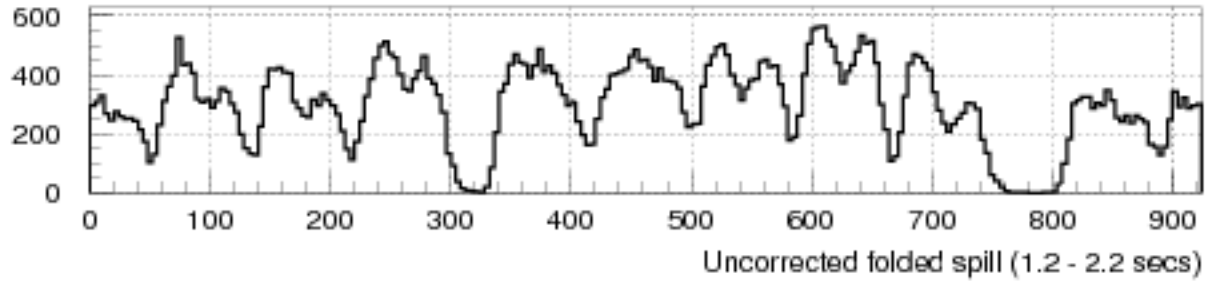
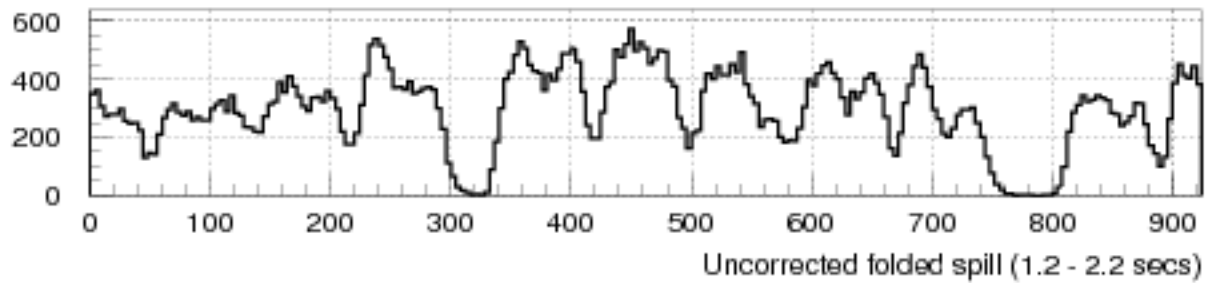
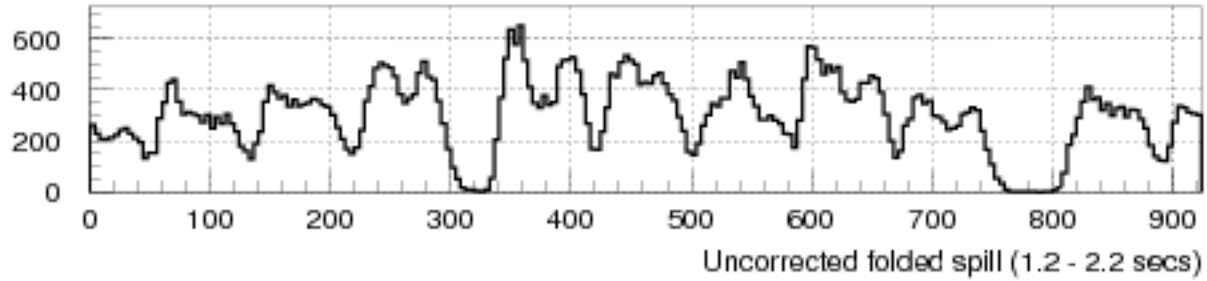
Correlogram



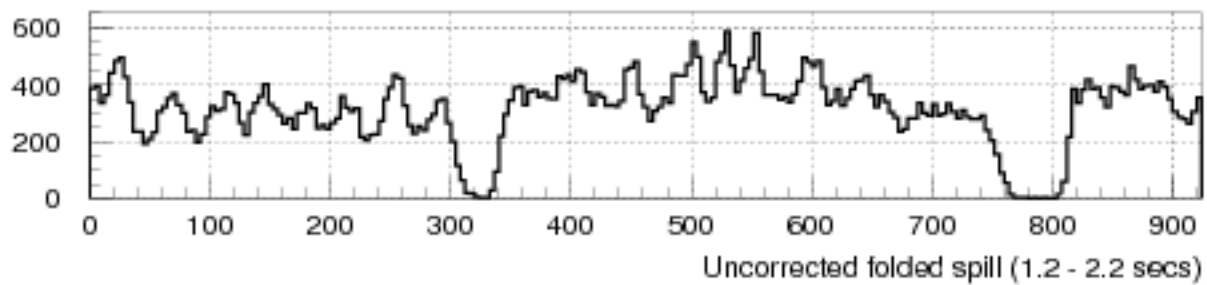
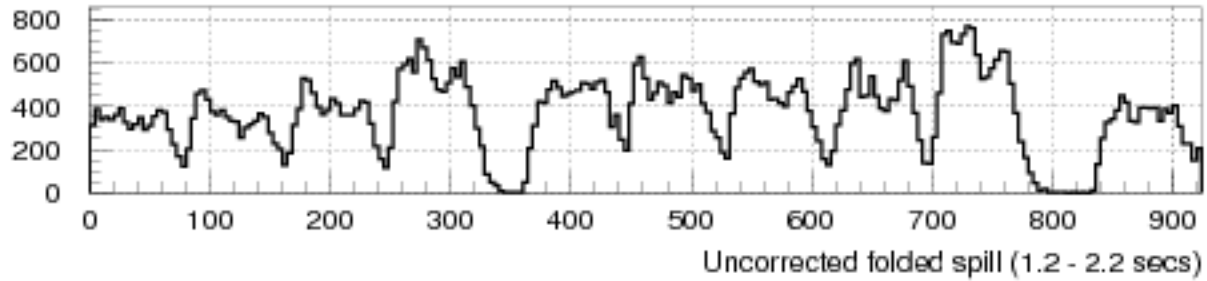
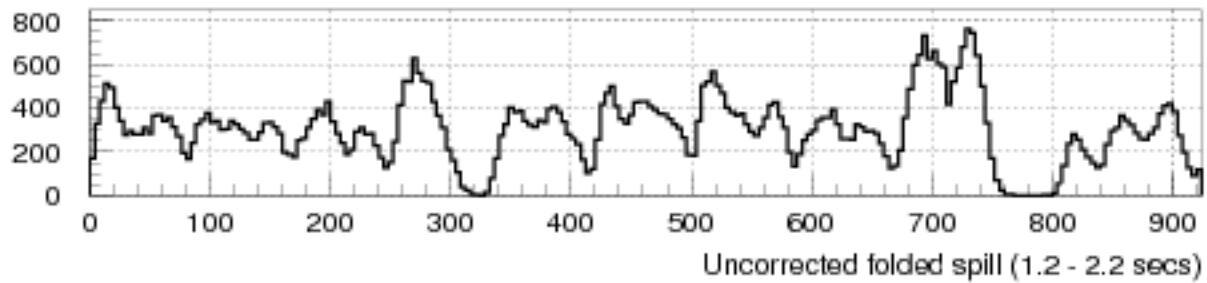
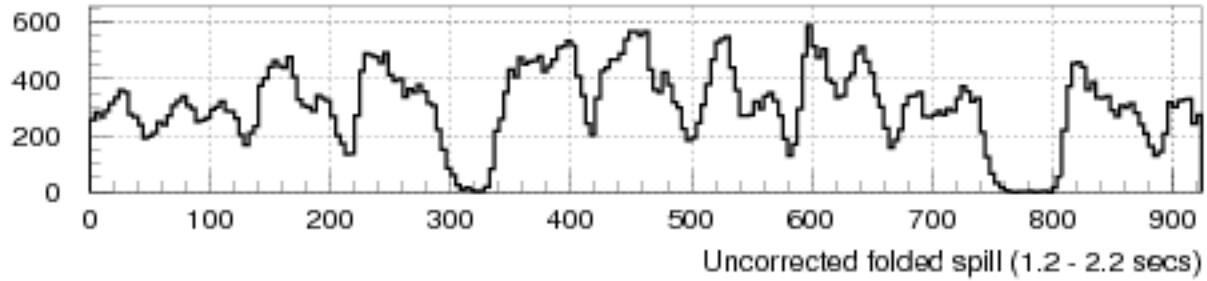
Correlogram



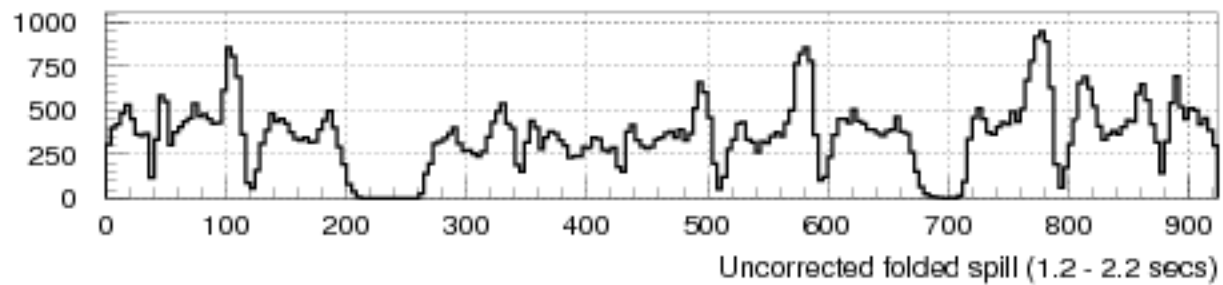
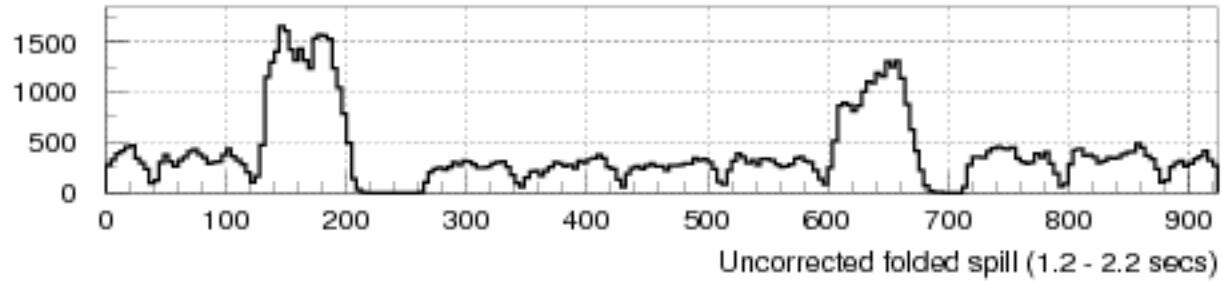
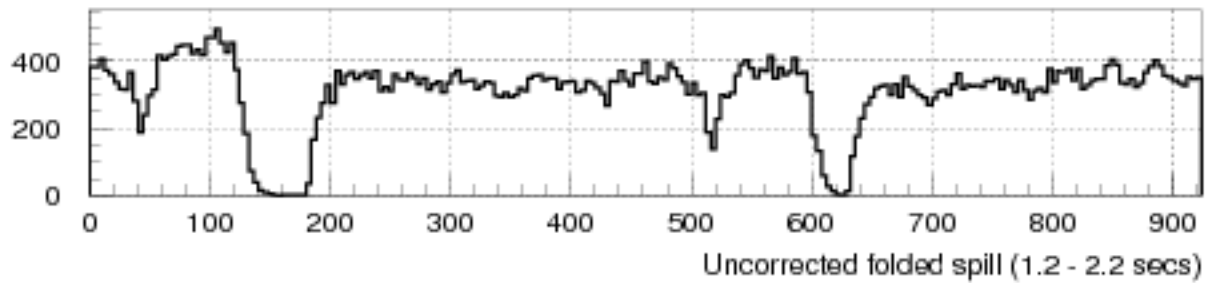
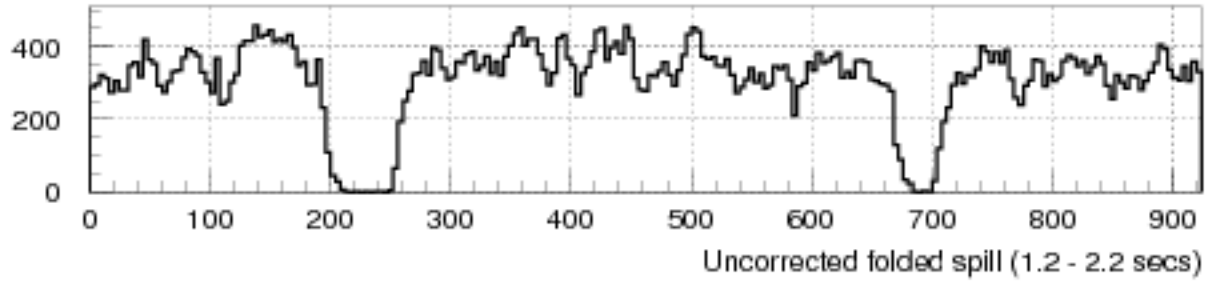
folded spill



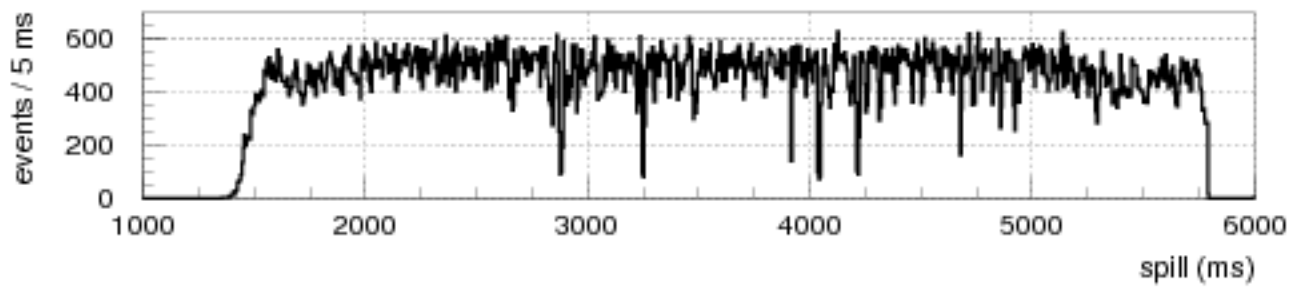
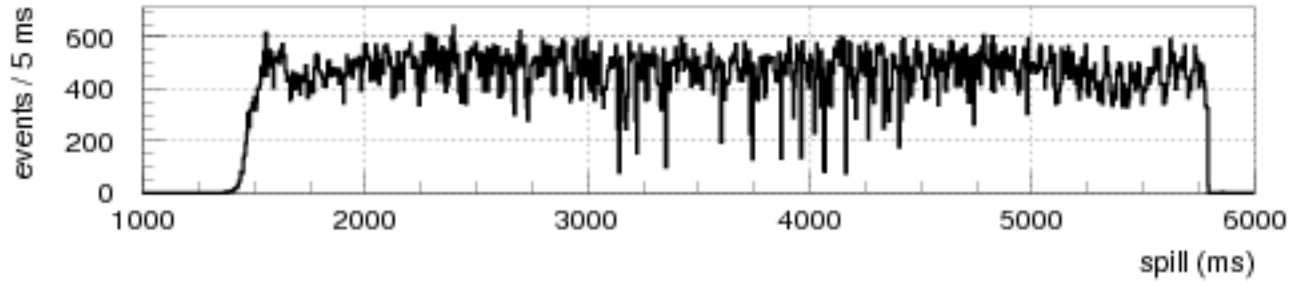
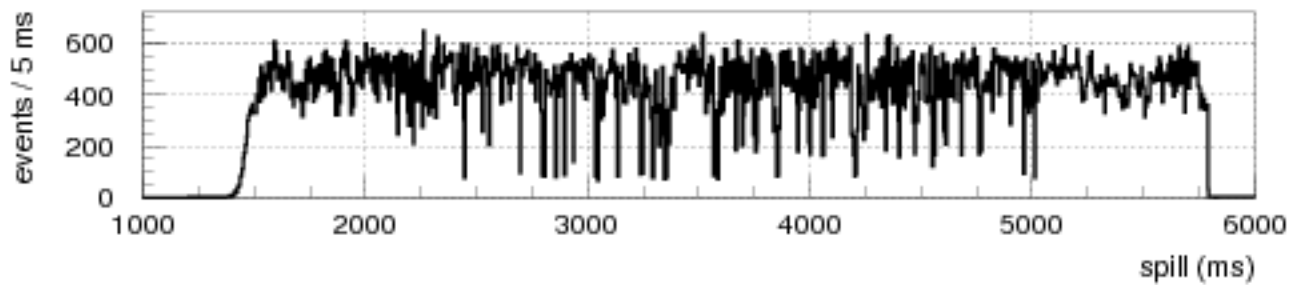
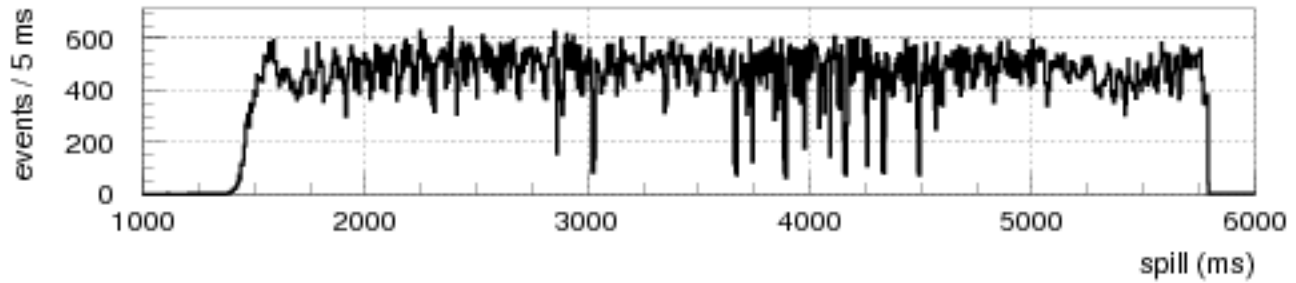
folded spill



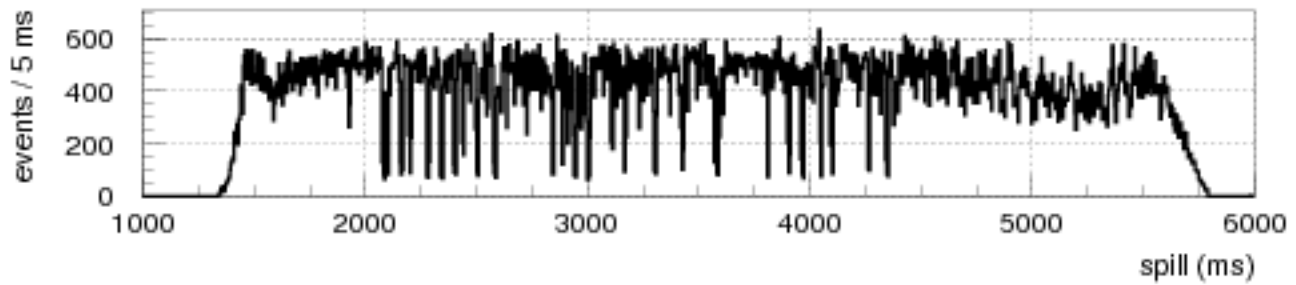
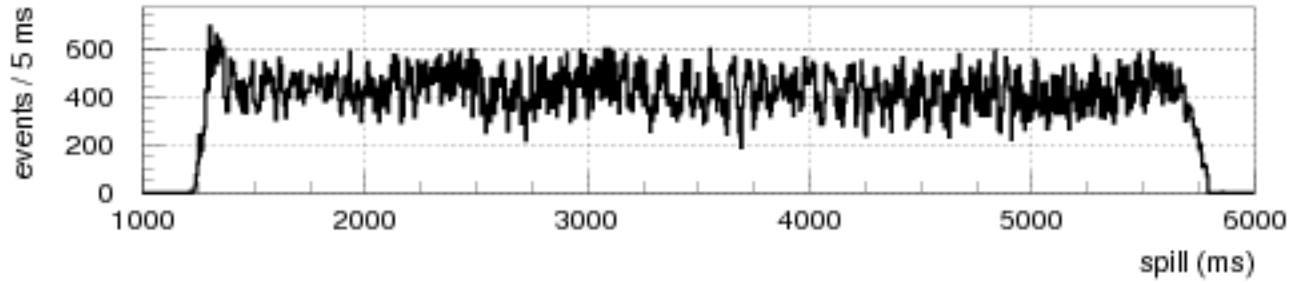
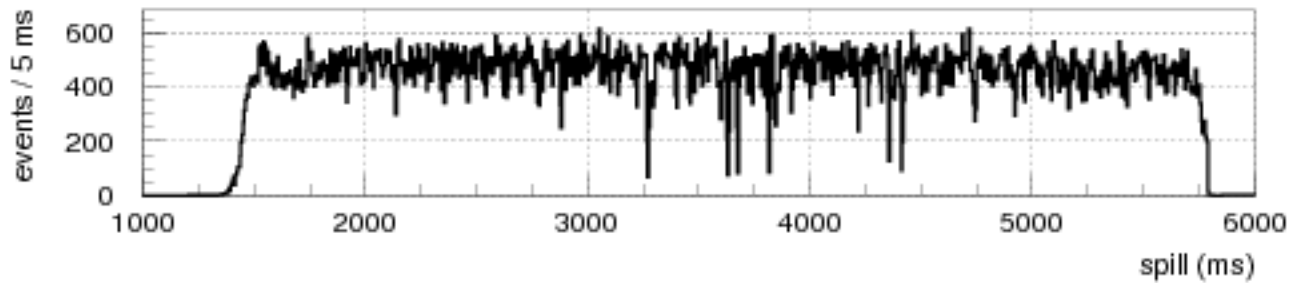
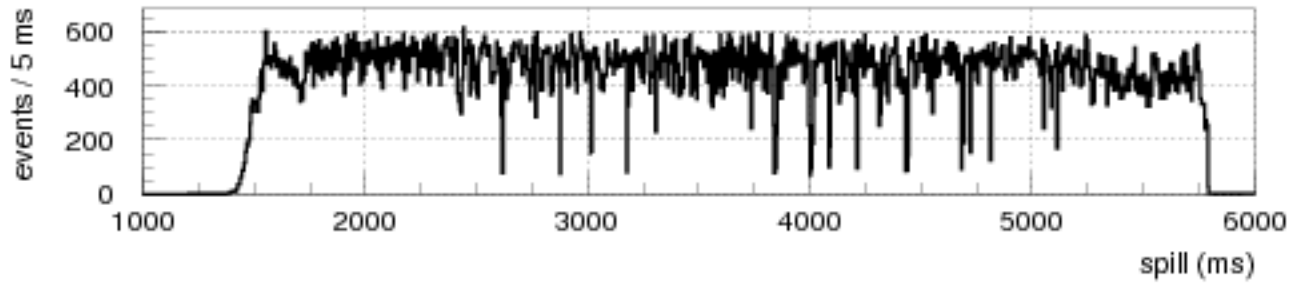
folded spill



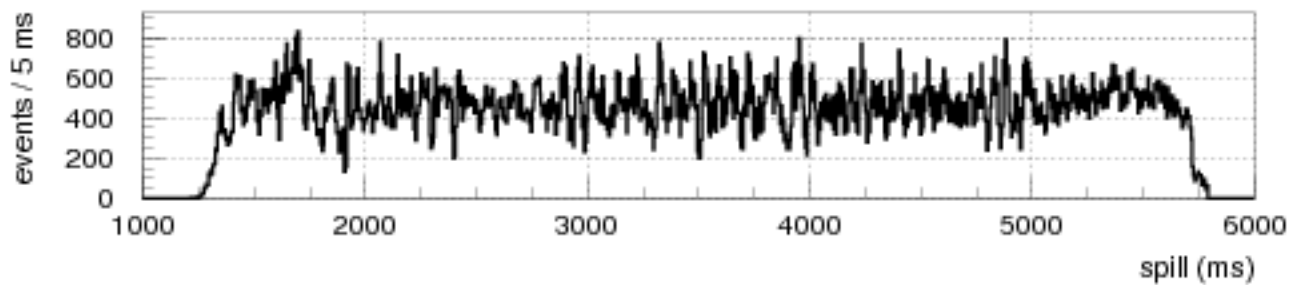
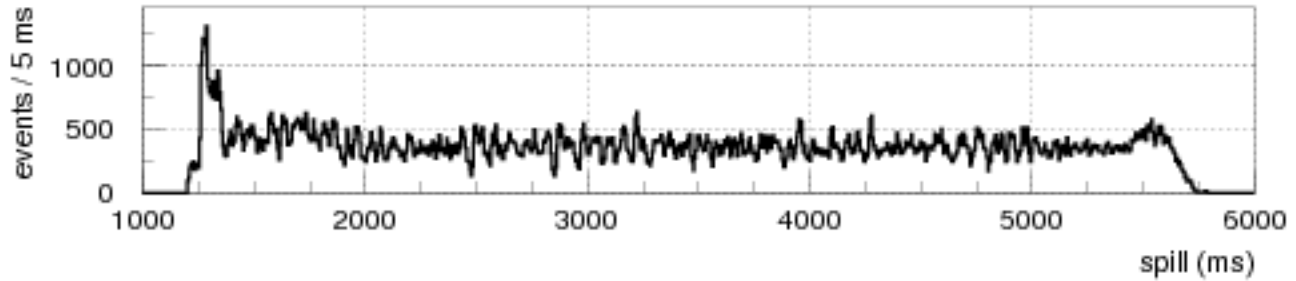
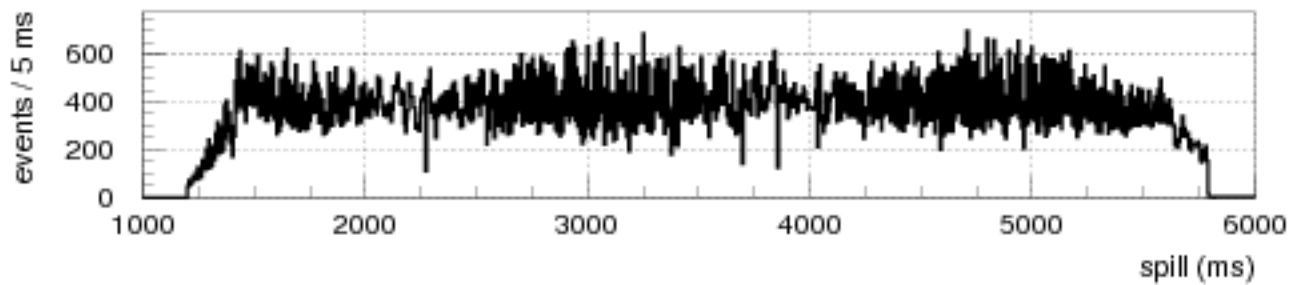
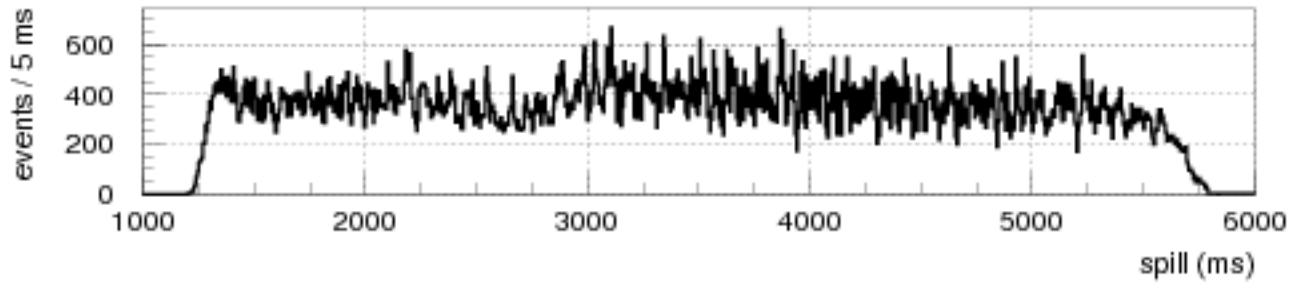
Spill - full range - 5 ms bins



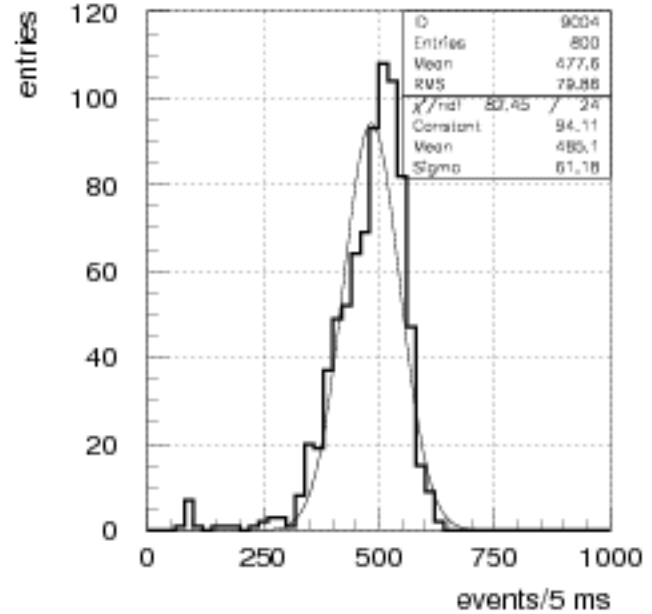
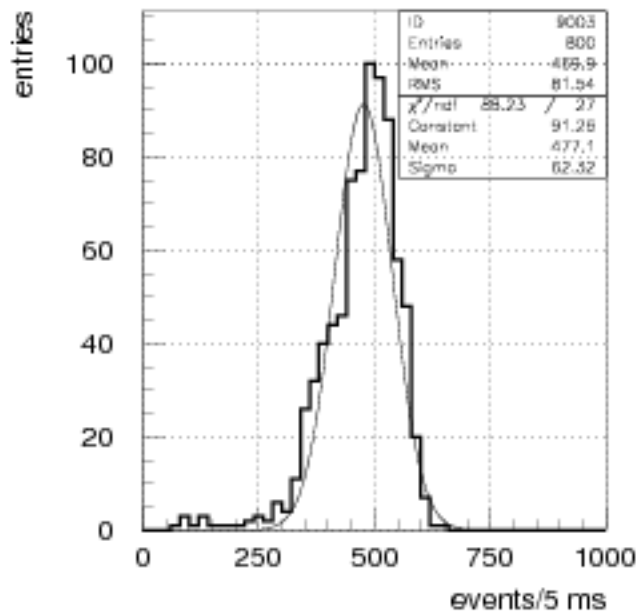
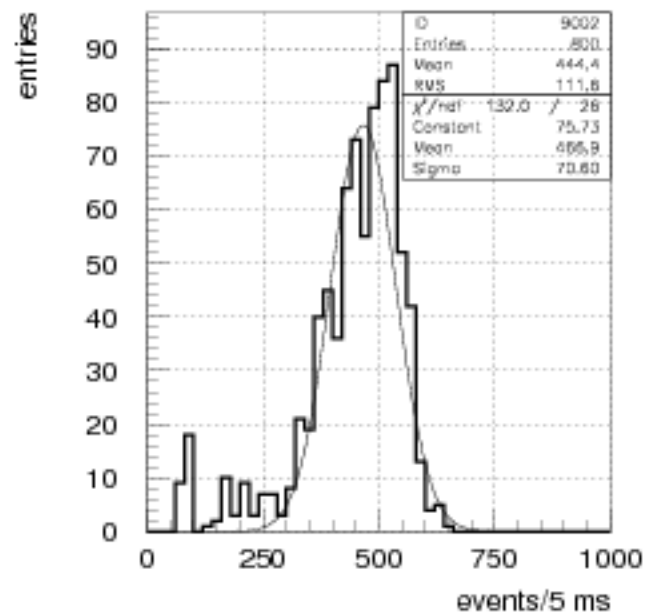
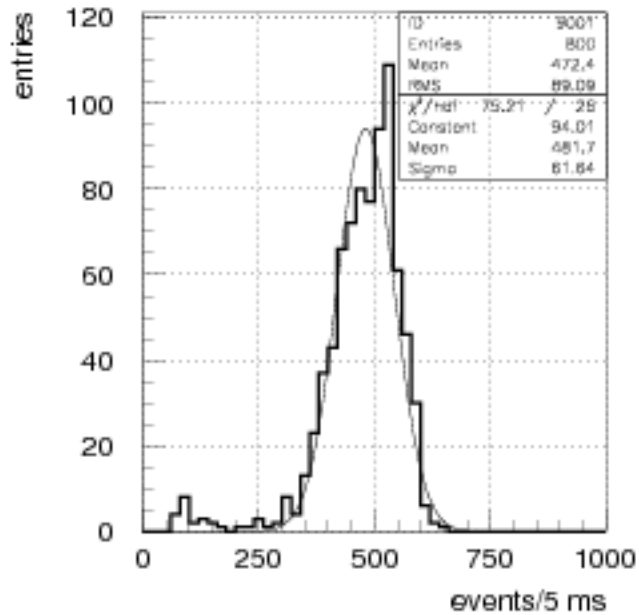
Spill - full range - 5 ms bins



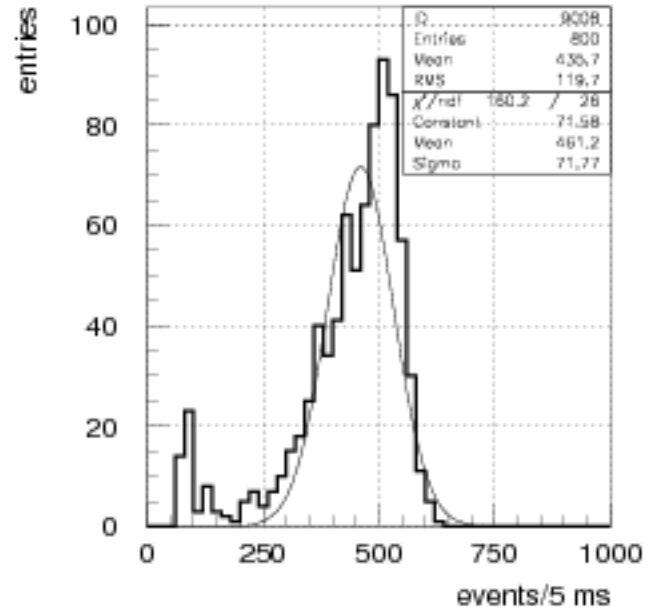
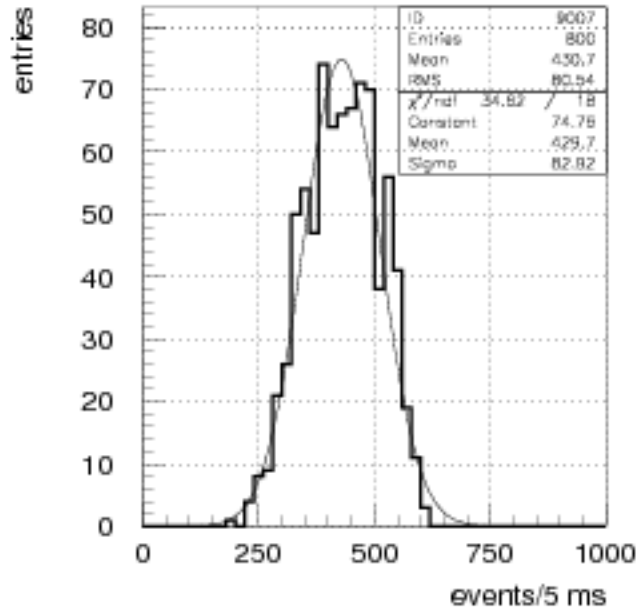
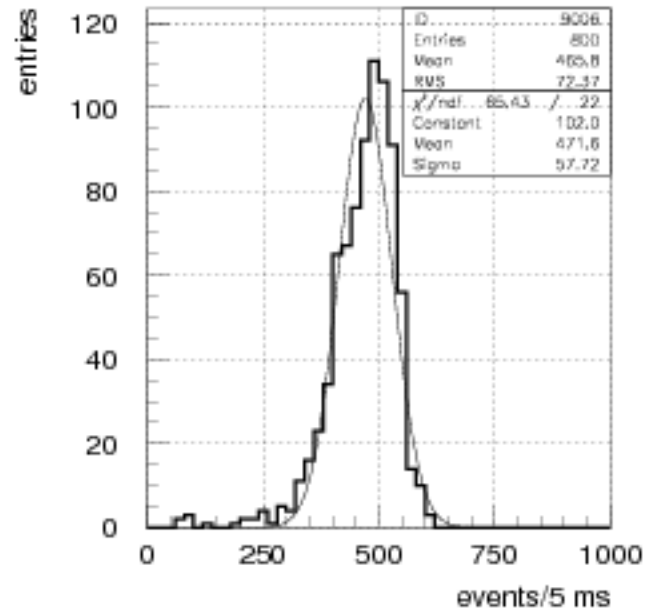
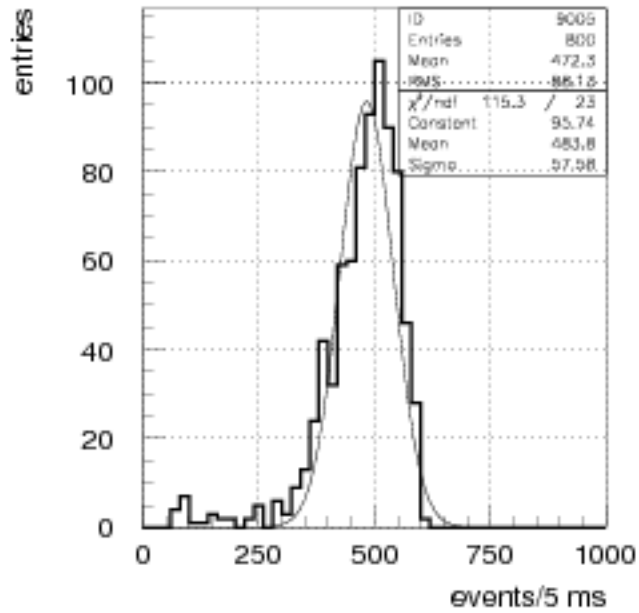
Spill - full range - 5 ms bins



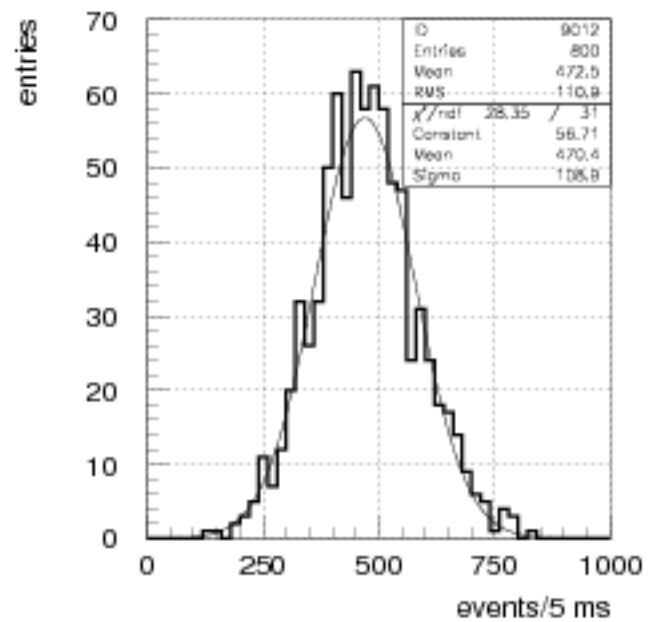
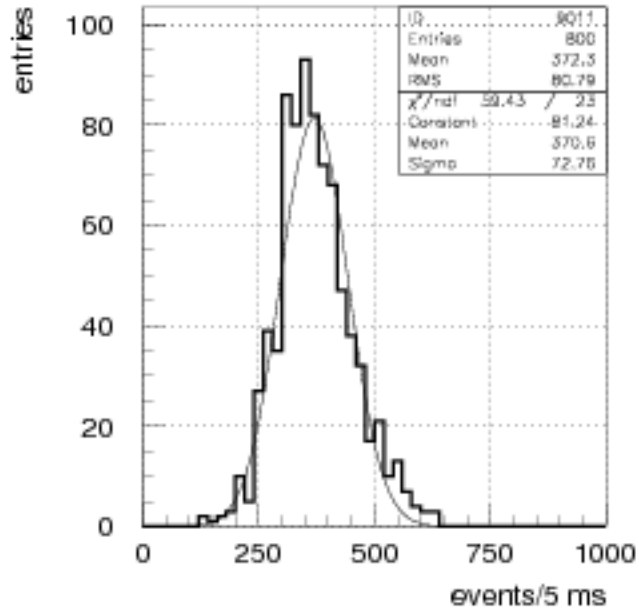
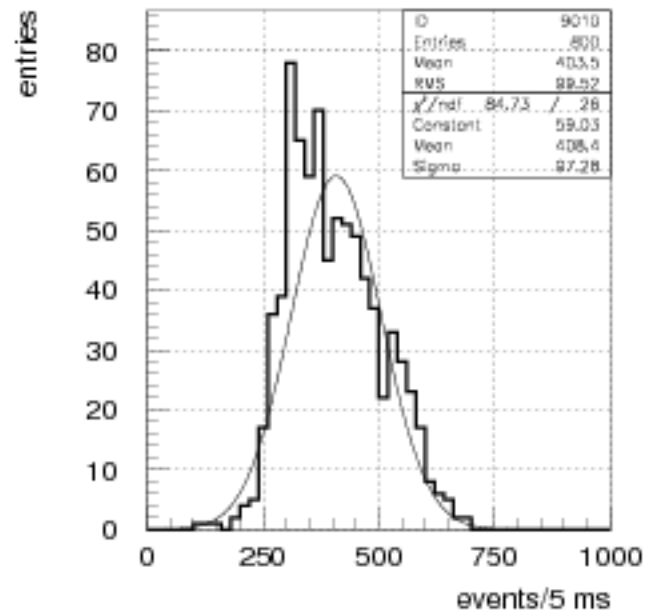
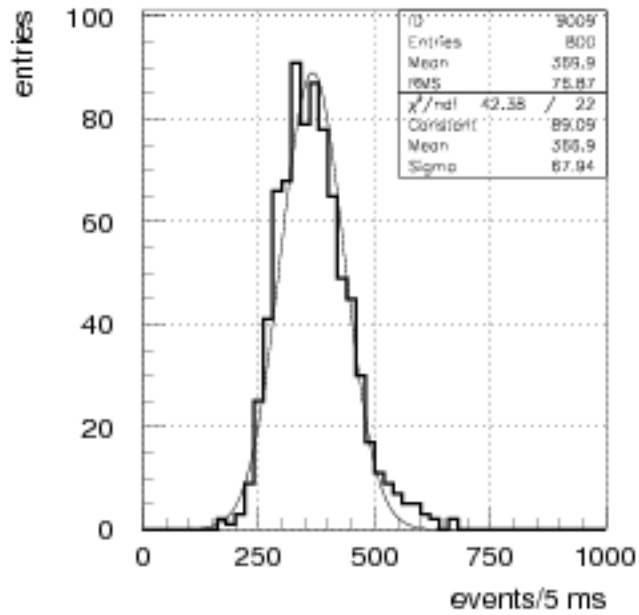
spill: counts / 5 ms (1.5 - 5.5 secs)



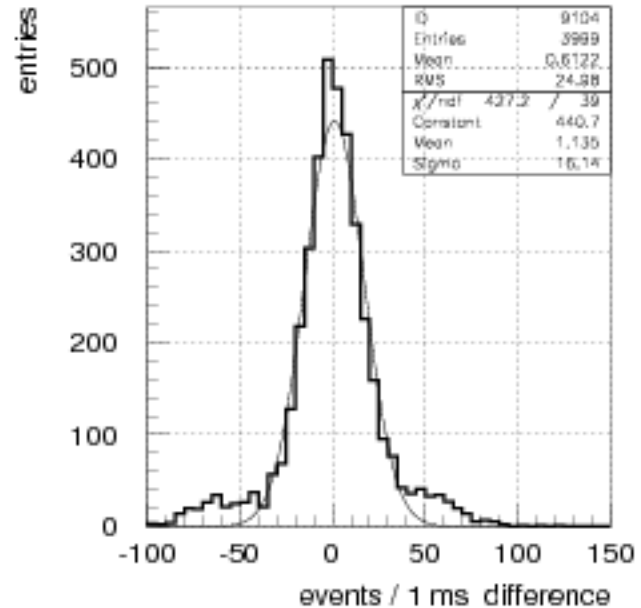
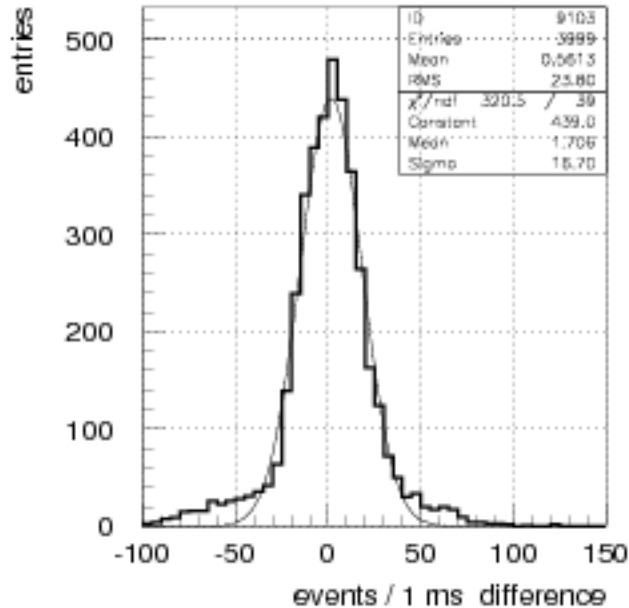
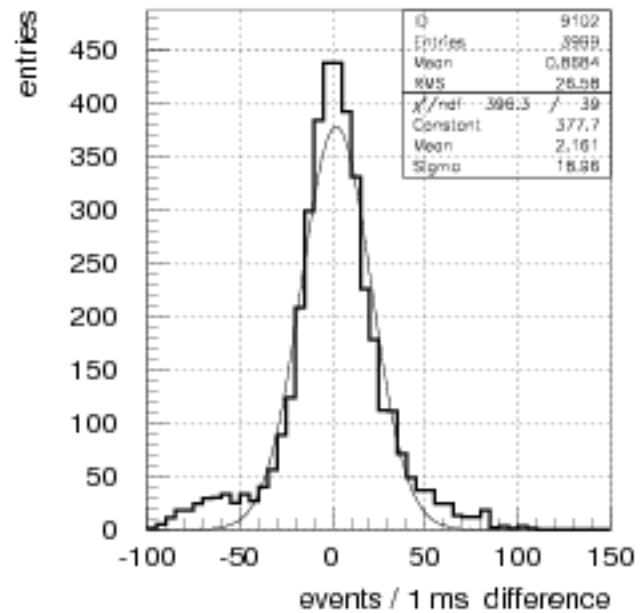
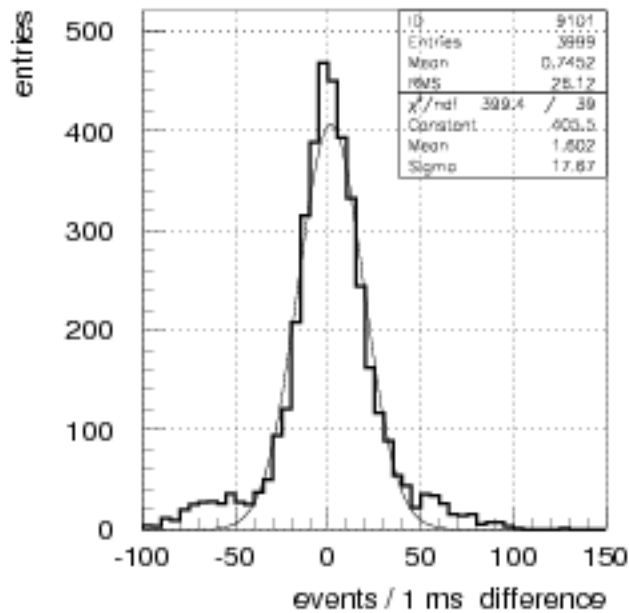
spill: counts / 5 ms (1.5 - 5.5 secs)



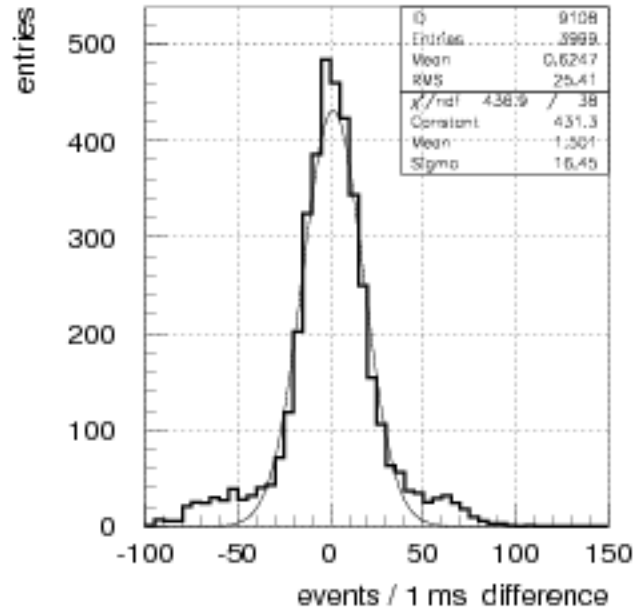
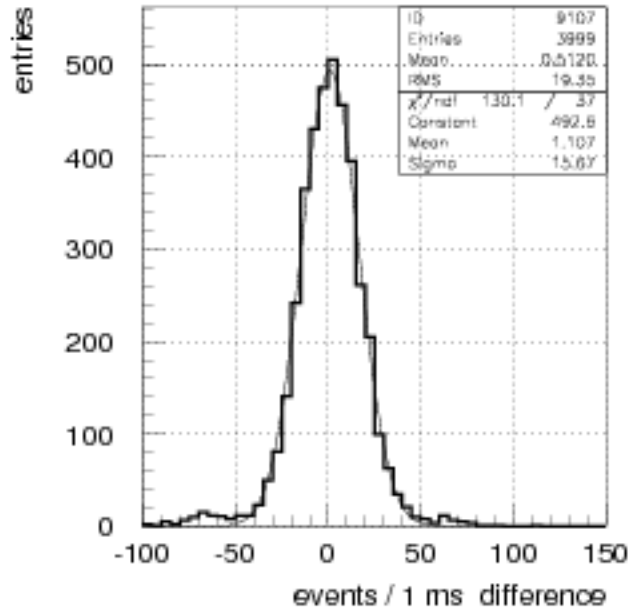
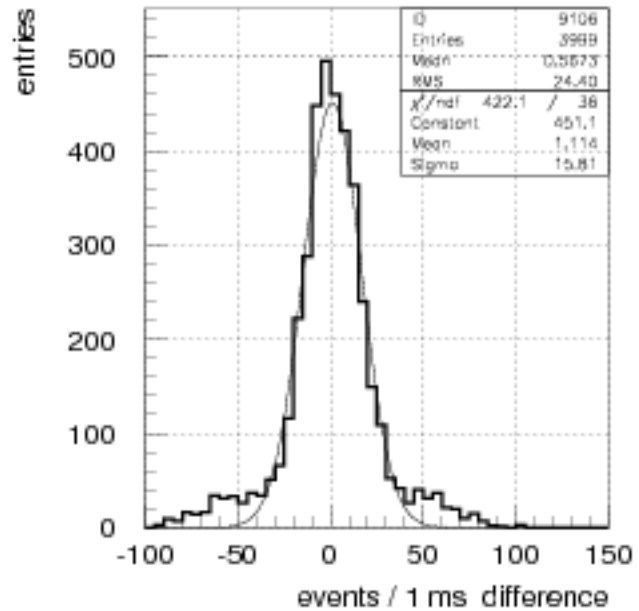
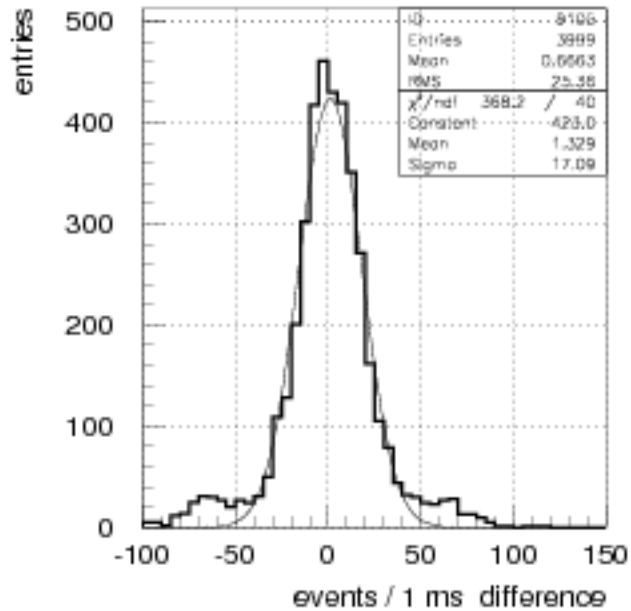
spill: counts / 5 ms (1.5 - 5.5 secs)



First difference of spill / ms (1.5 - 5.5 secs)



First difference of spill / ms (1.5 - 5.5 secs)



First difference of spill / ms (1.5 - 5.5 secs)

