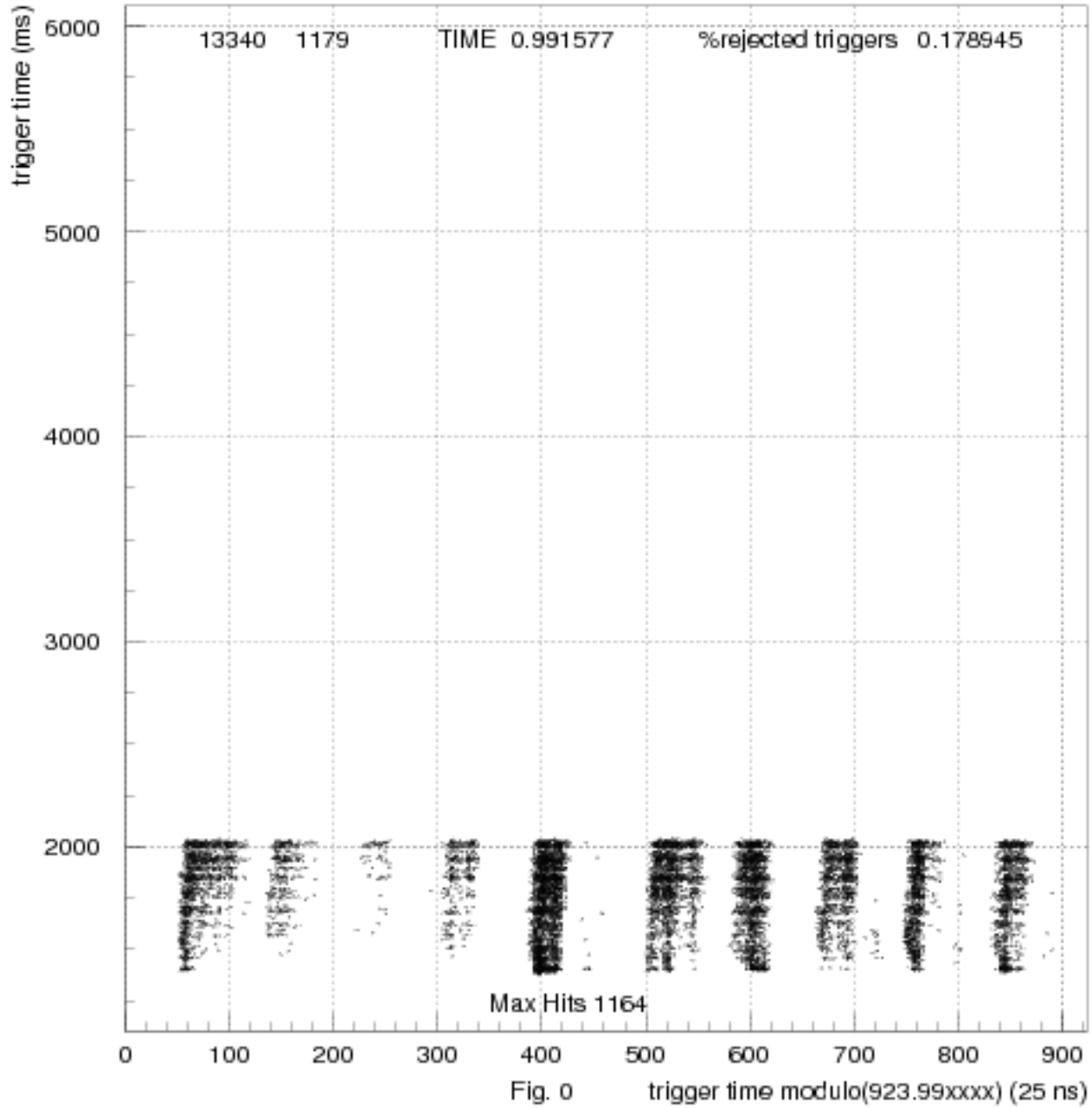


Hit density for corrected spill (2D spill cut 00, hit cut 110/trigger)



Hits GTK(1) vs Trigger Time. Fourier Analysis of Spill

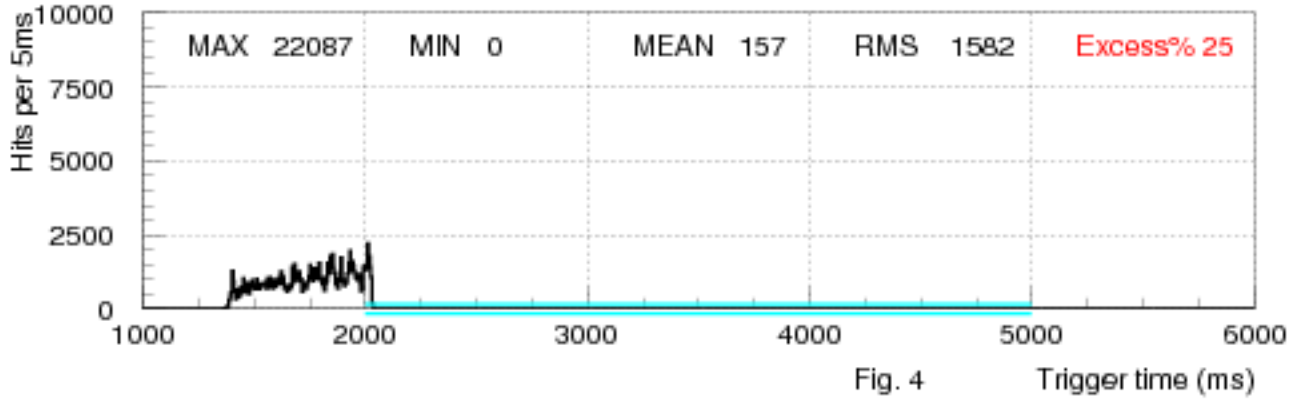


Fig. 4 Trigger time (ms)

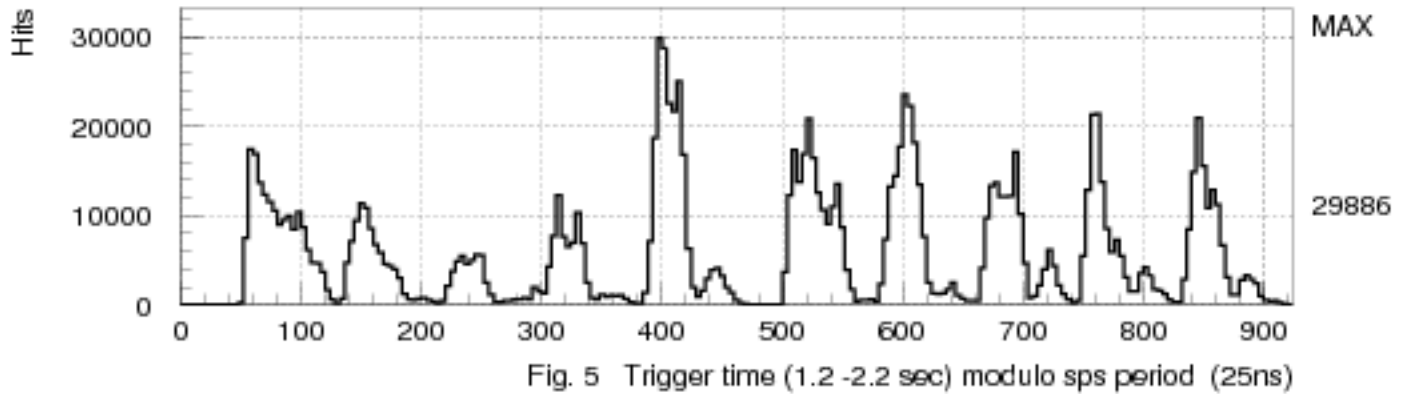


Fig. 5 Trigger time (1.2-2.2 sec) modulo sps period (25ns)

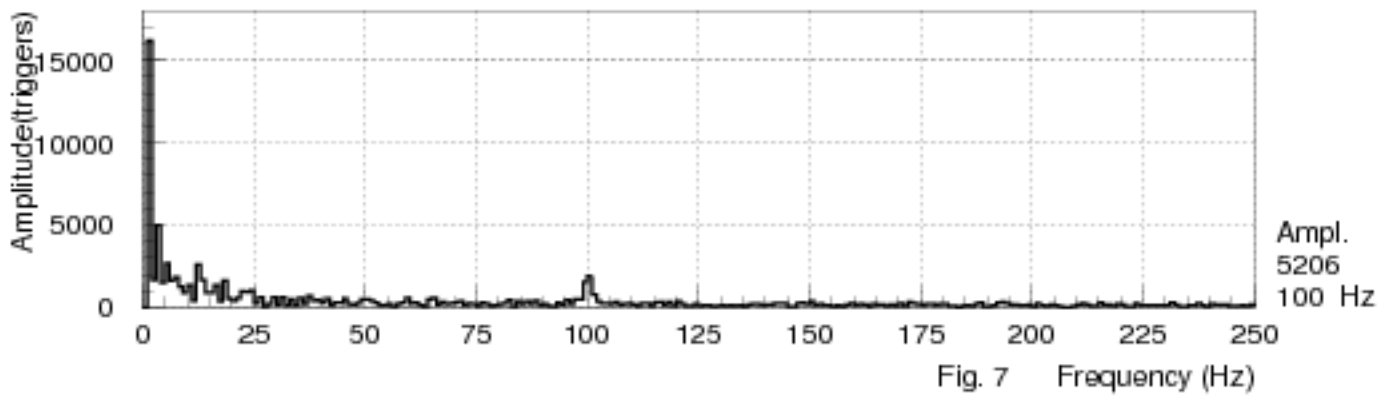
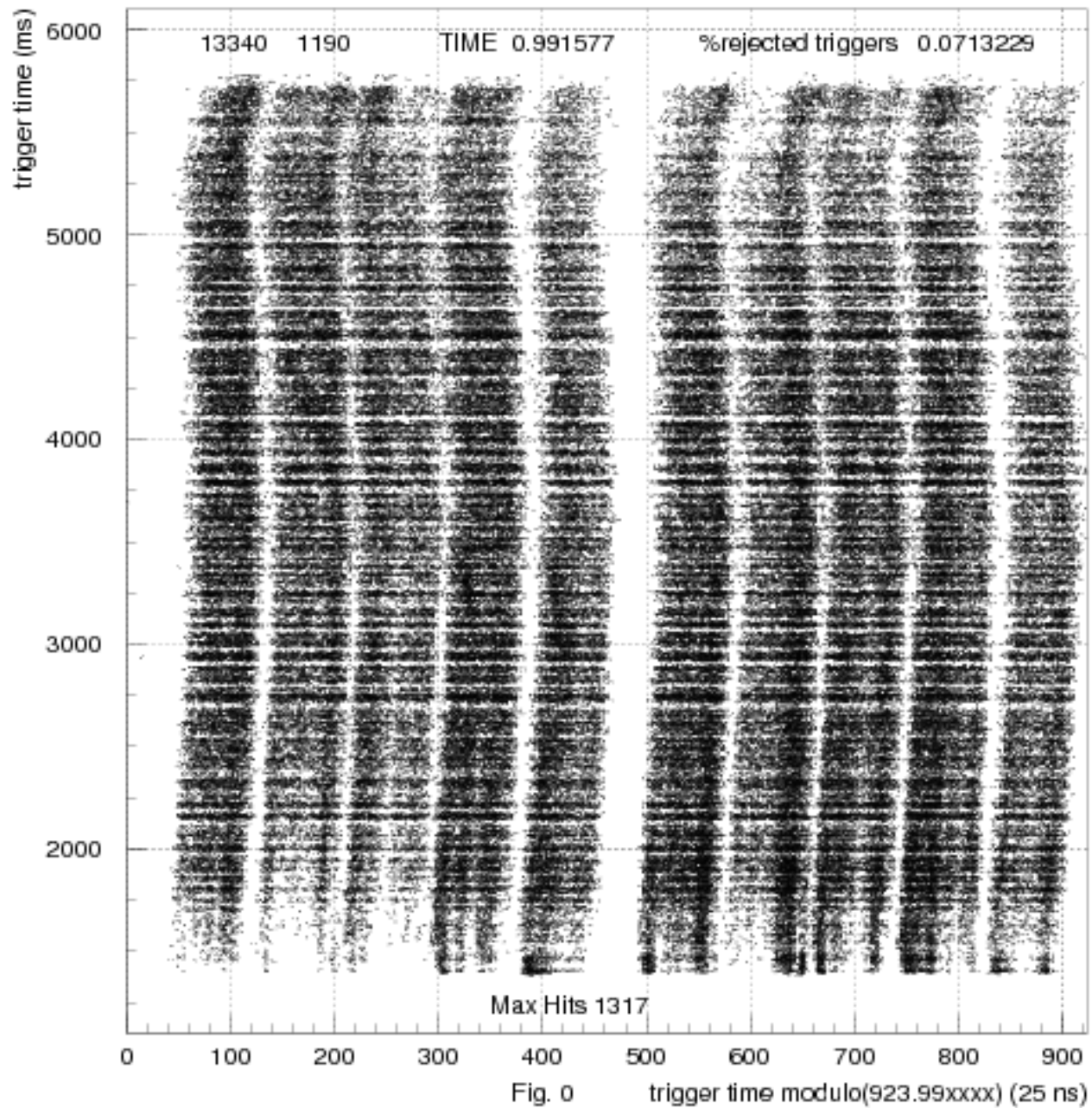
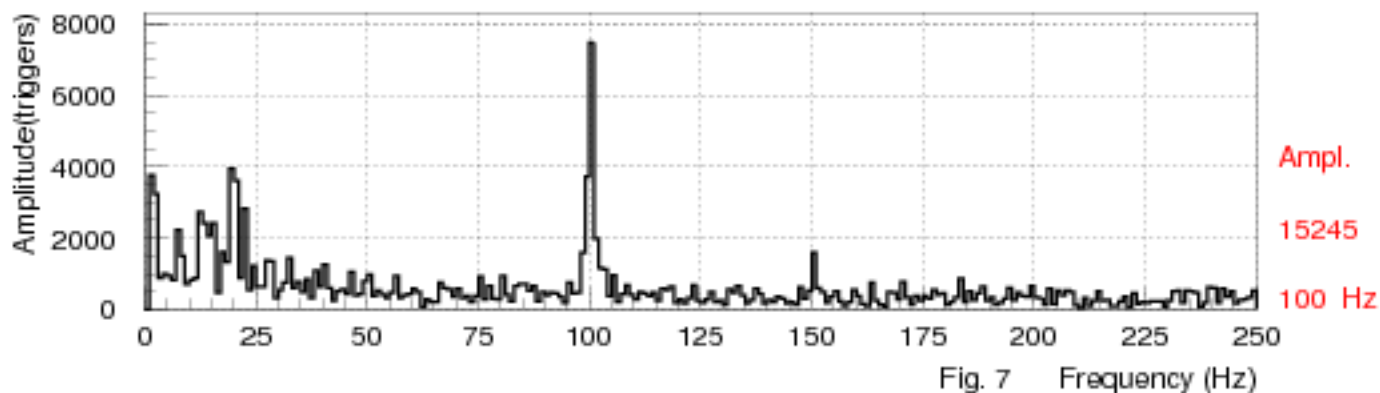
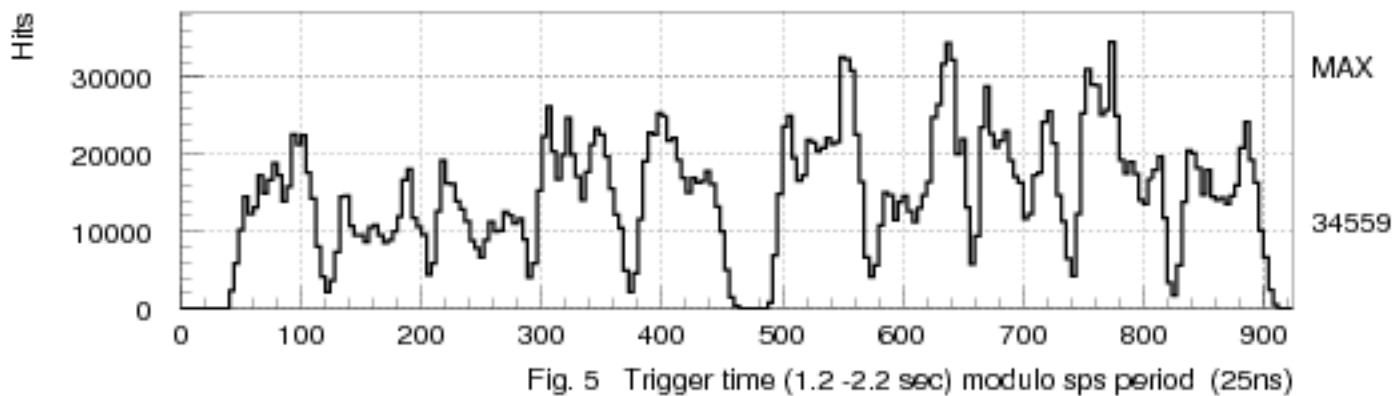
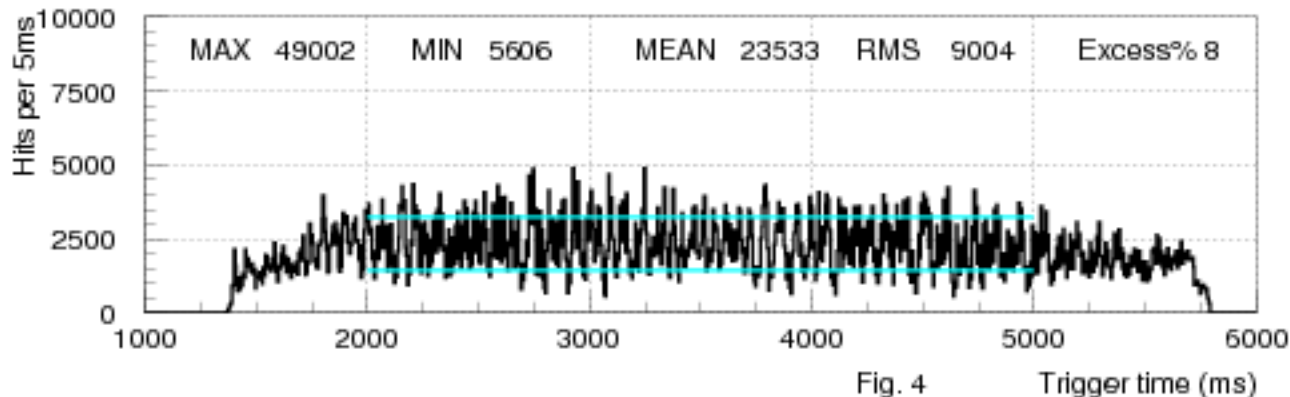


Fig. 7 Frequency (Hz)

Hit density for corrected spill (2D spill cut 00, hit cut 110/trigger)



Hits GTK(1) vs Trigger Time. Fourier Analysis of Spill



Trigger Time Hit Intensity Distributions

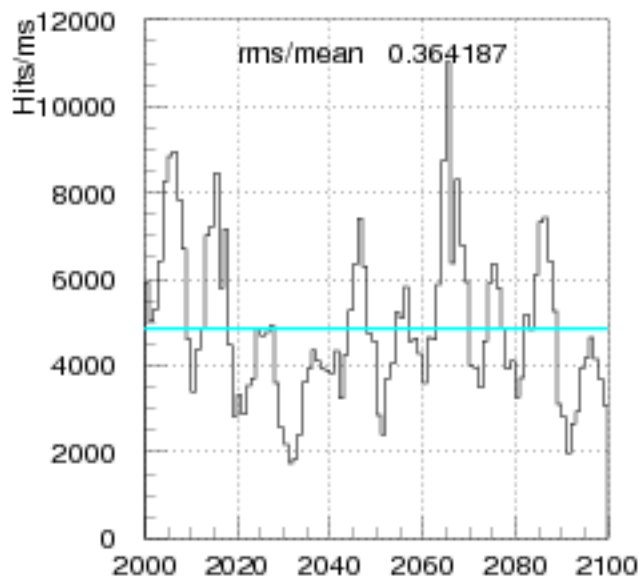


Fig 9a Trigger time (ms)

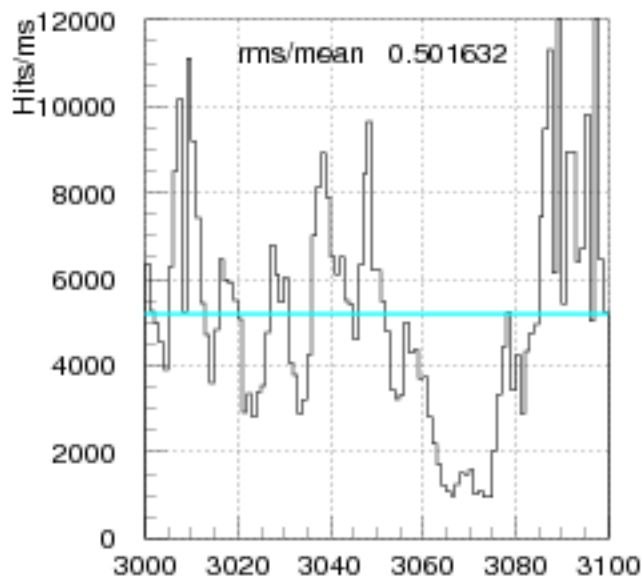


Fig 9b Trigger time (ms)

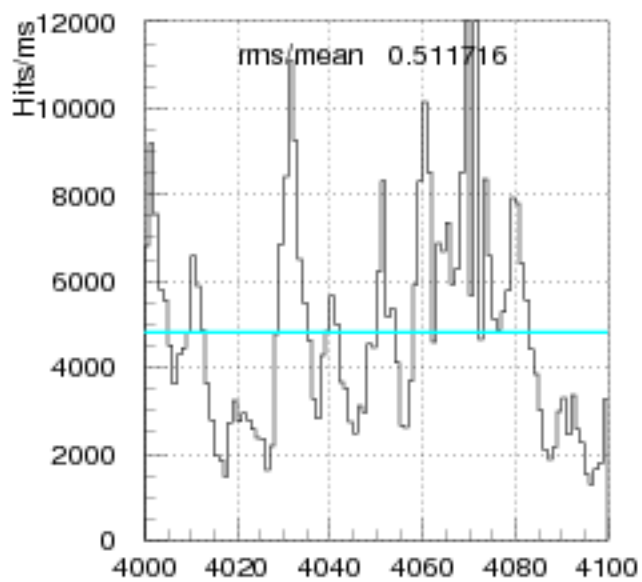


Fig 9c Trigger time (ms)

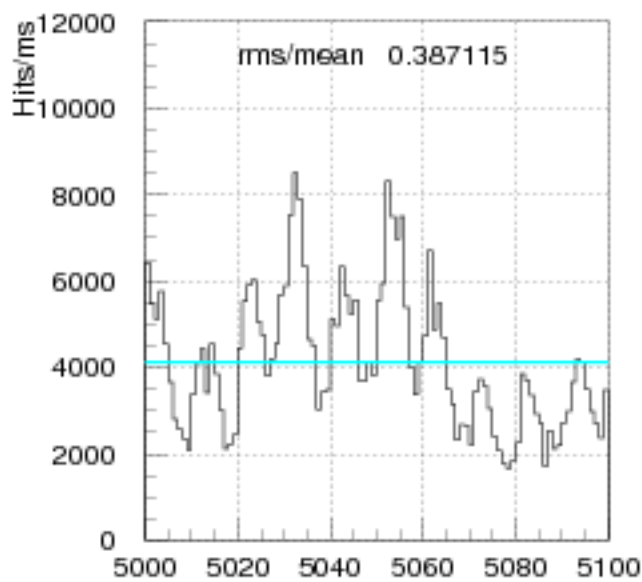
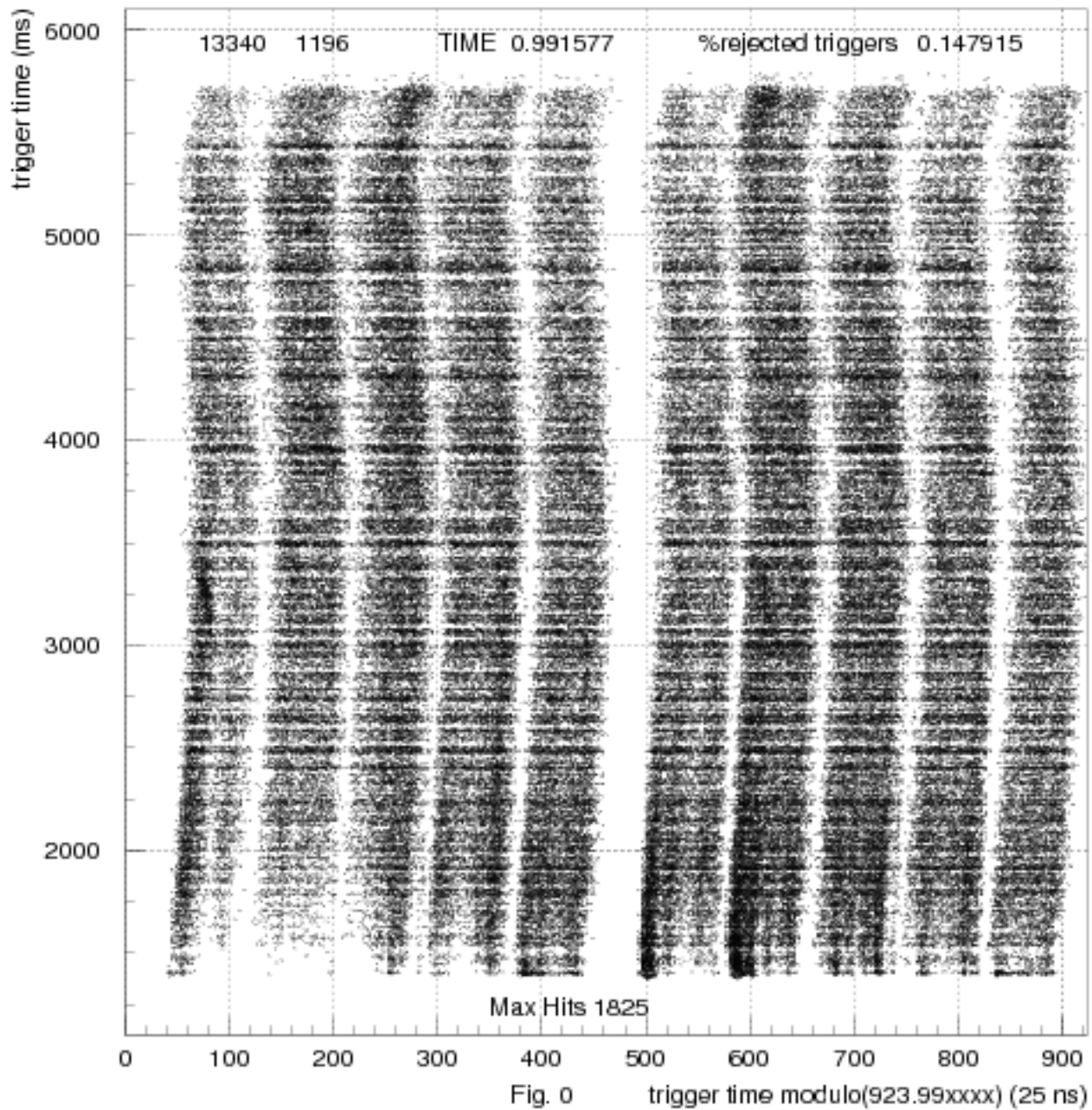


Fig 9d Trigger time (ms)

Hit density for corrected spill (2D spill cut 00, hit cut 110/trigger)



Hits GTK(1) vs Trigger Time. Fourier Analysis of Spill

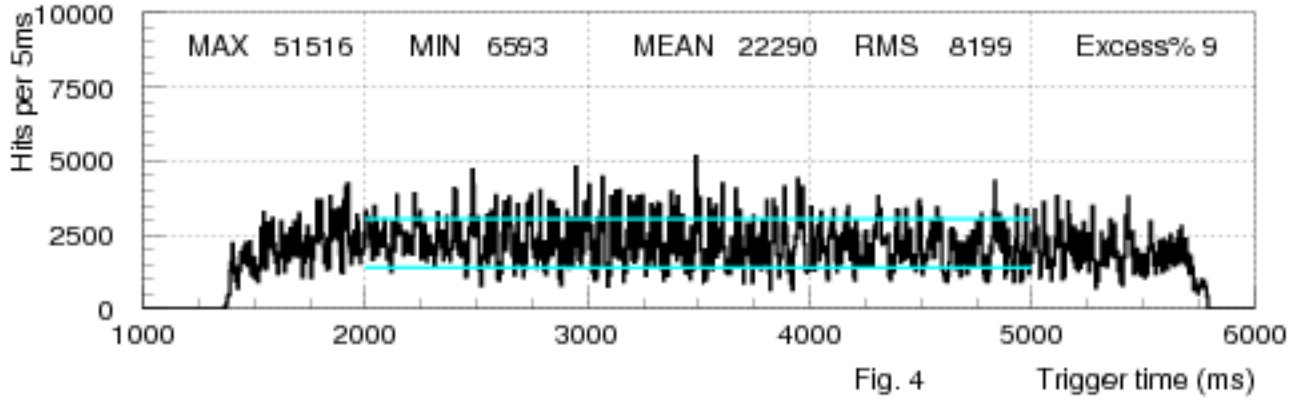


Fig. 4

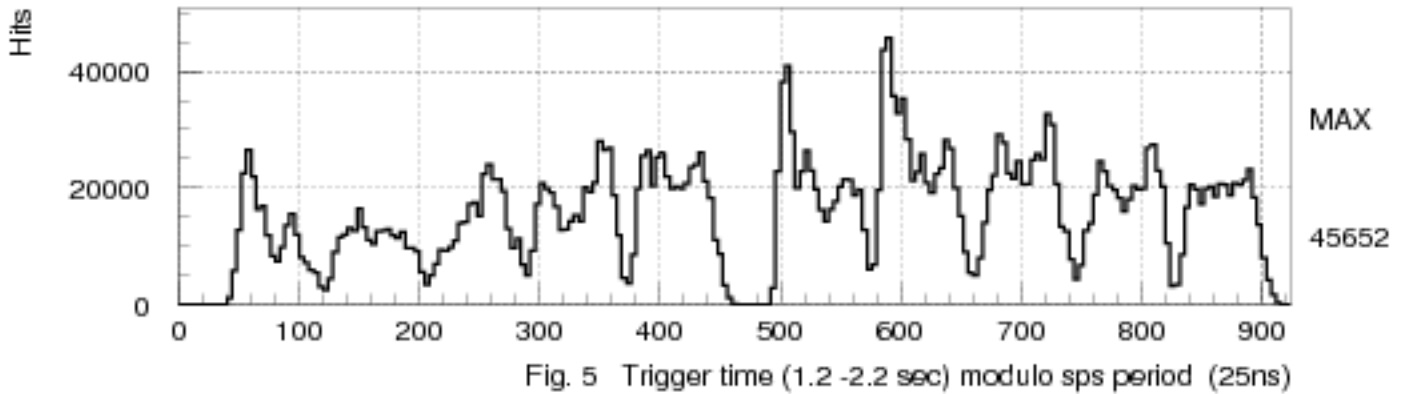


Fig. 5

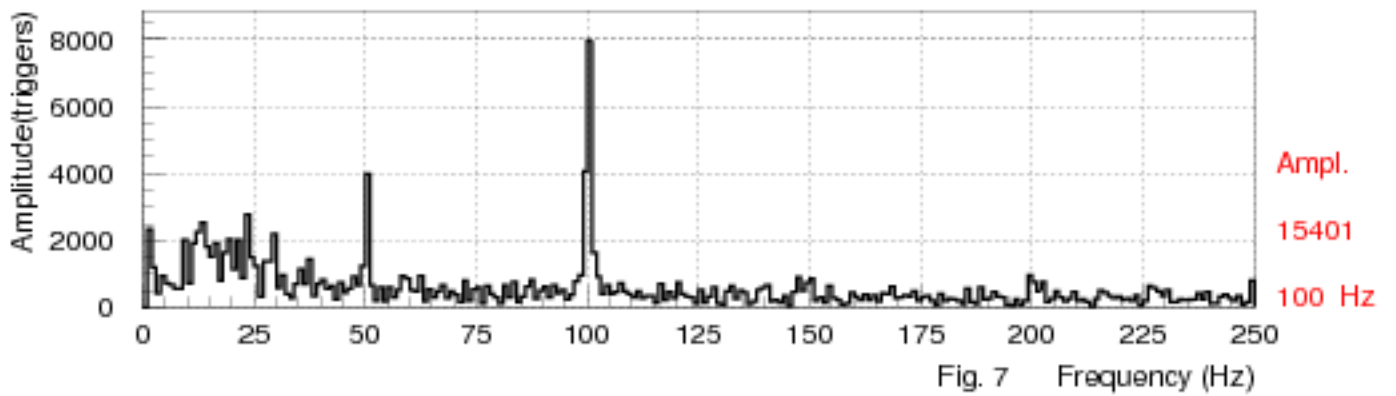


Fig. 7

Trigger Time Hit Intensity Distributions

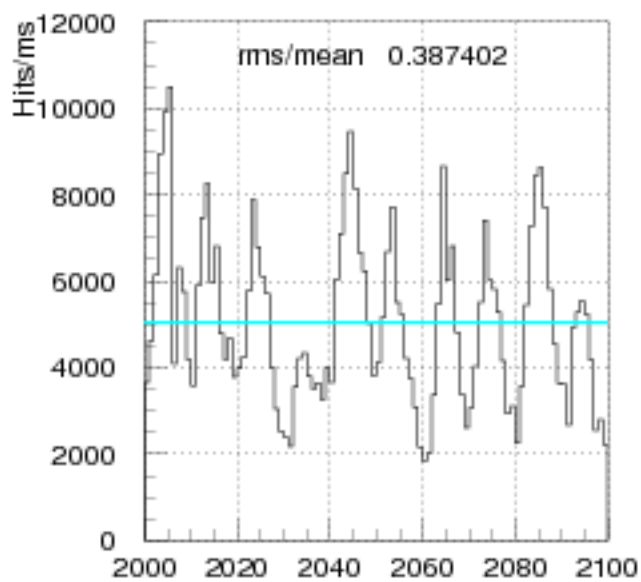


Fig 9a Trigger time (ms)

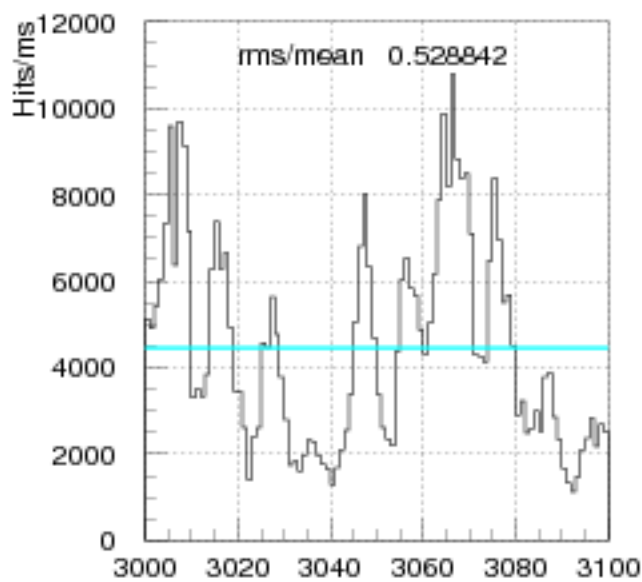


Fig 9b Trigger time (ms)

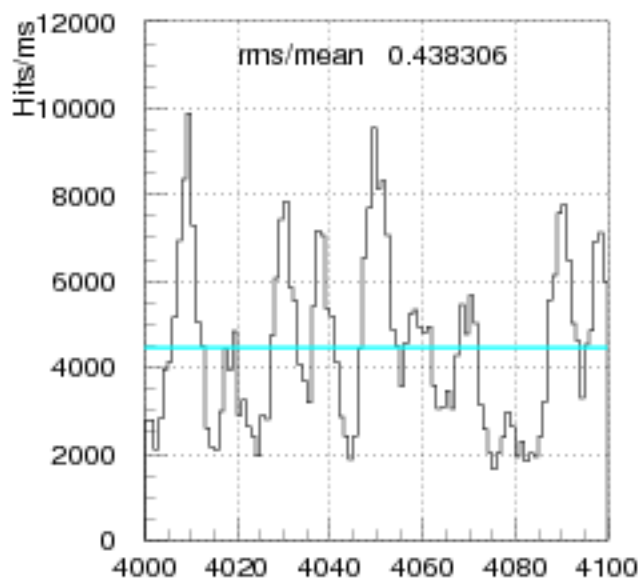


Fig 9c Trigger time (ms)

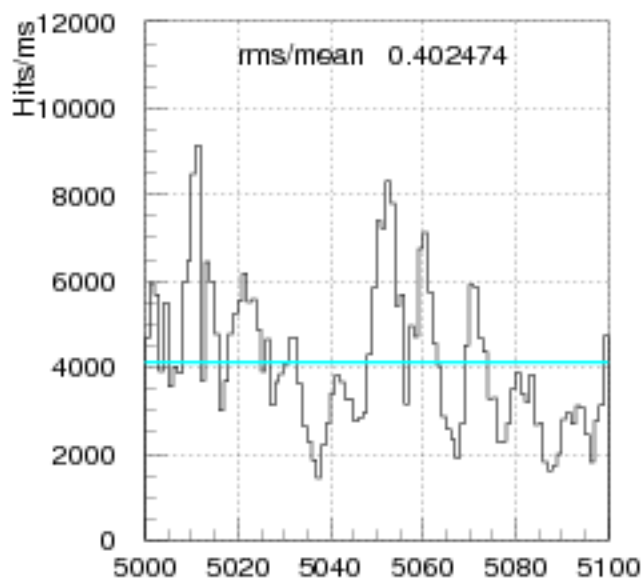
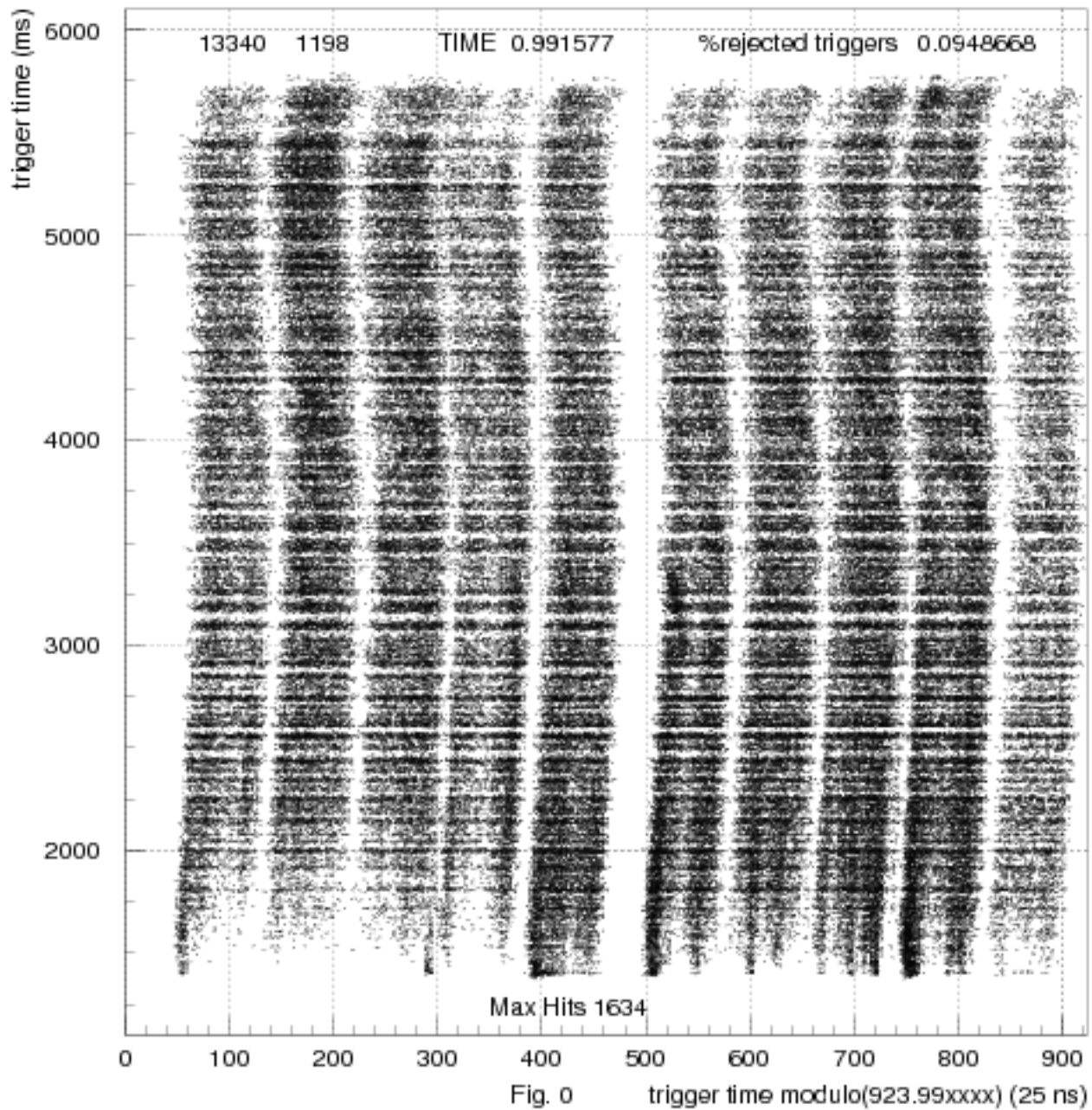


Fig 9d Trigger time (ms)

Hit density for corrected spill (2D spill cut 00, hit cut 110/trigger)



x 10 Hits GTK(1) vs Trigger Time. Fourier Analysis of Spill

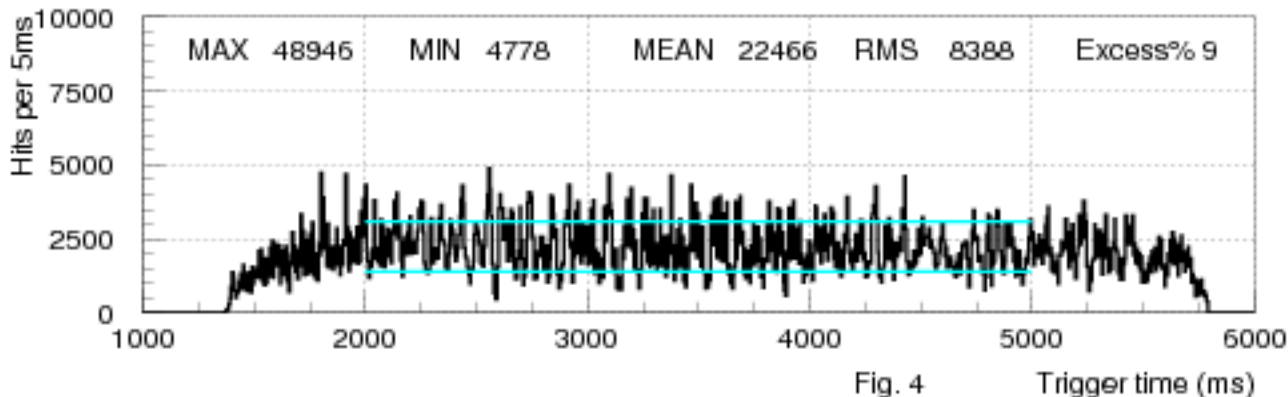


Fig. 4

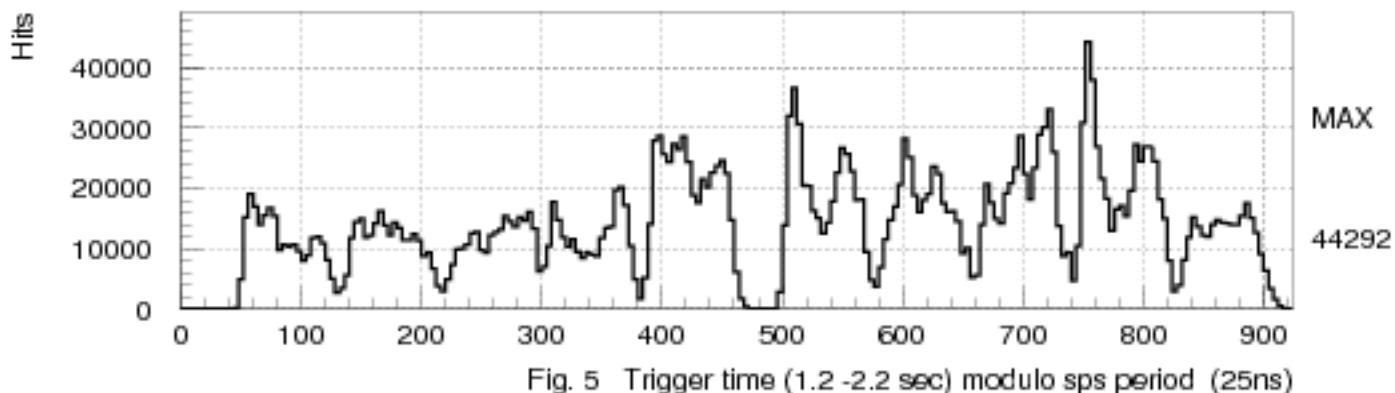


Fig. 5

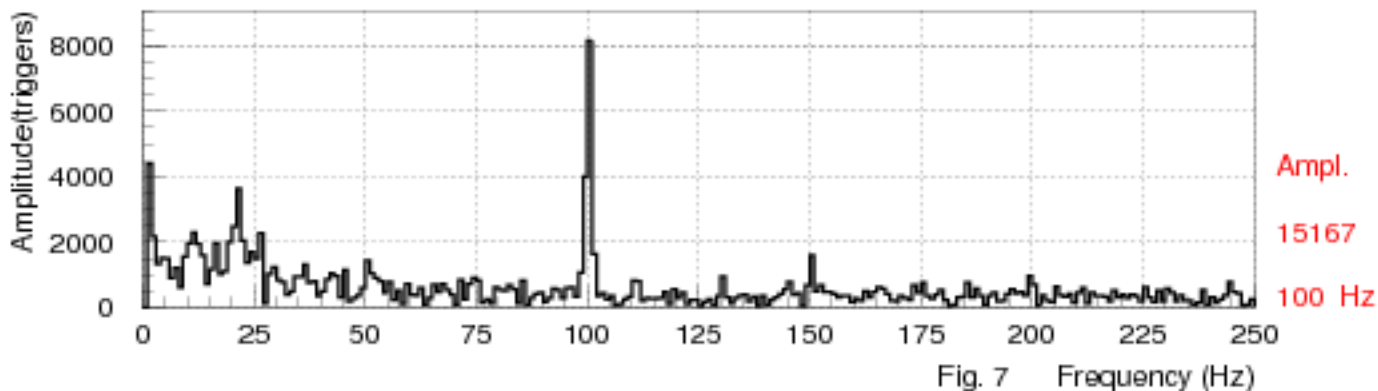


Fig. 7

Trigger Time Hit Intensity Distributions

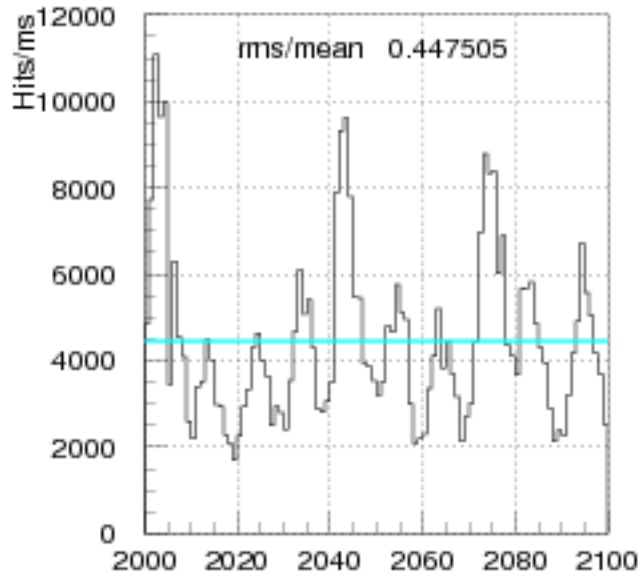


Fig 9a Trigger time (ms)

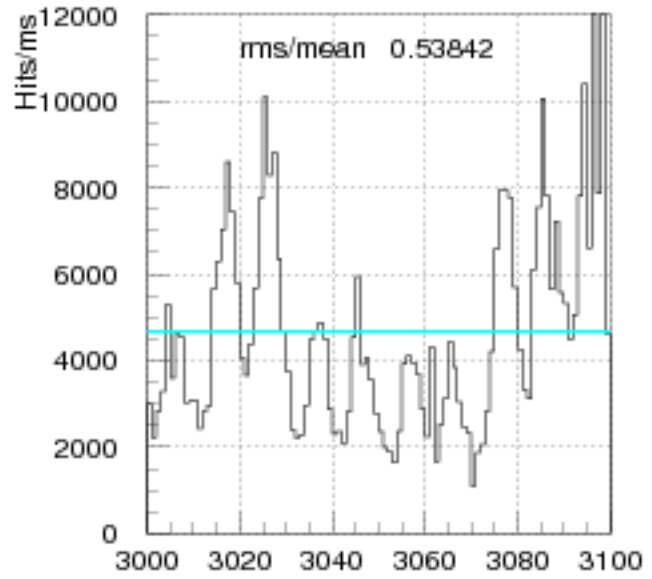


Fig 9b Trigger time (ms)

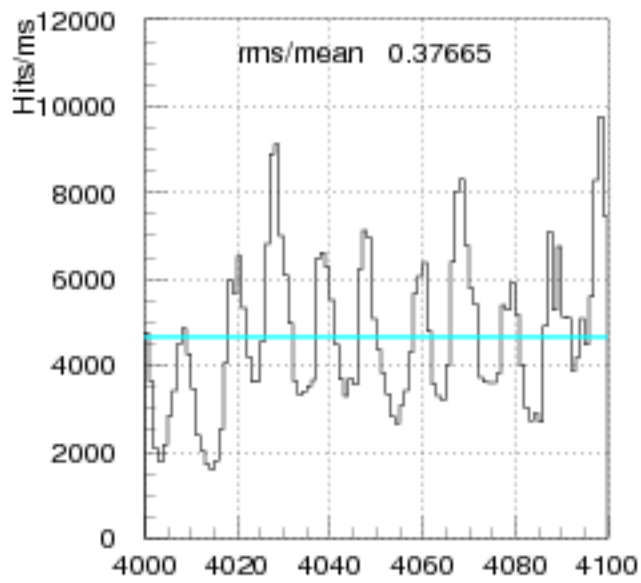


Fig 9c Trigger time (ms)

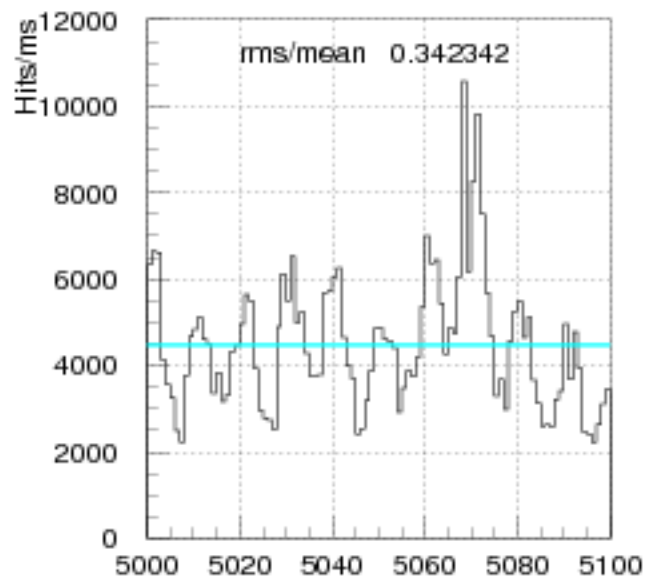
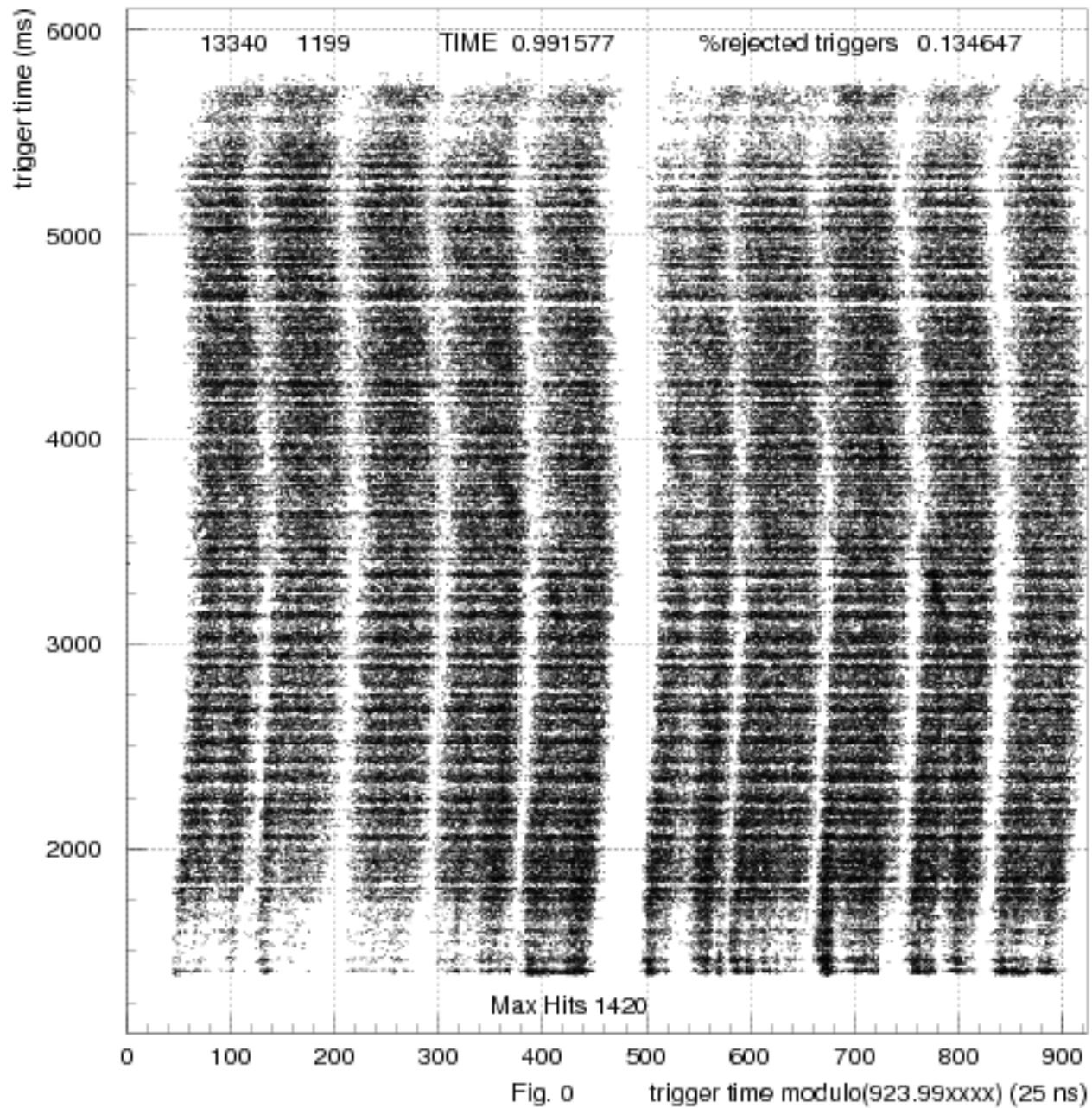


Fig 9d Trigger time (ms)

Hit density for corrected spill (2D spill cut 00, hit cut 110/trigger)



x 10 Hits GTK(1) vs Trigger Time. Fourier Analysis of Spill

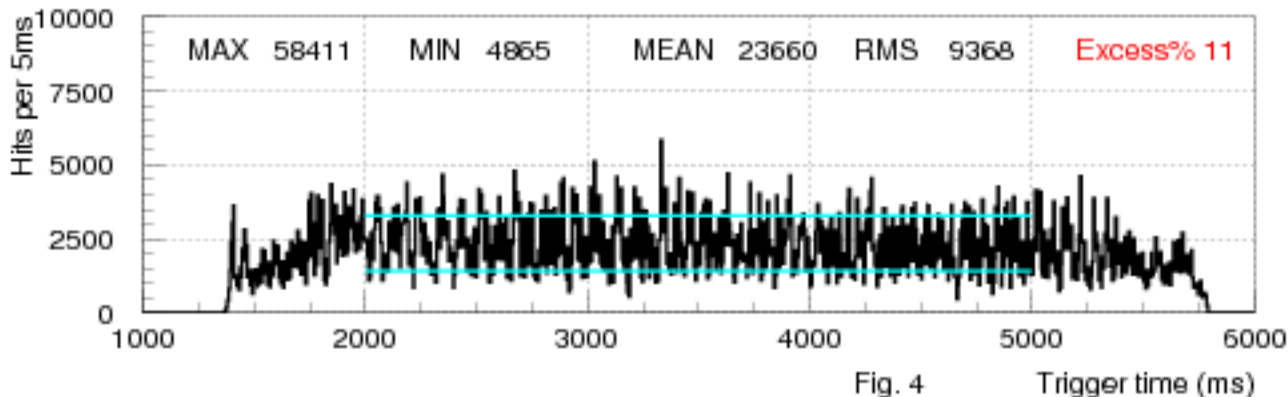


Fig. 4 Trigger time (ms)

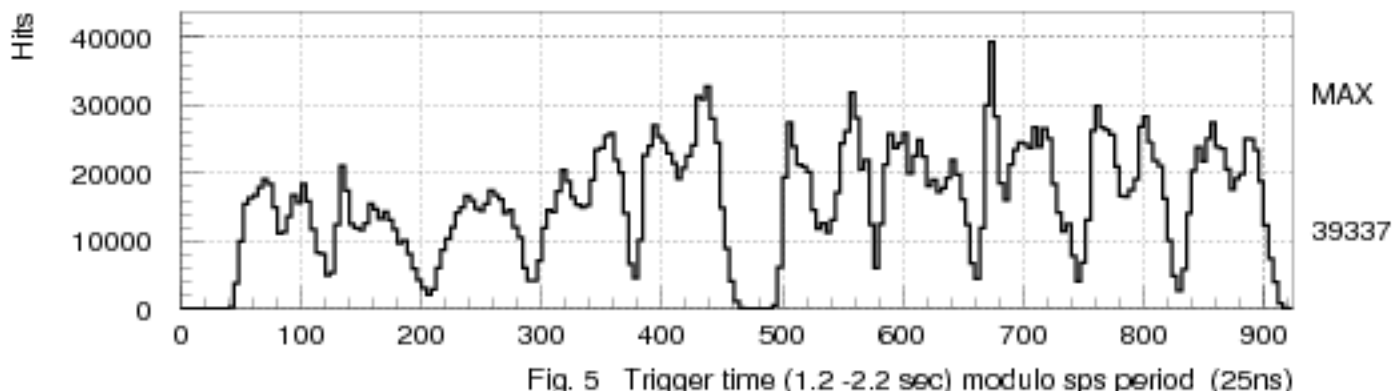


Fig. 5 Trigger time (1.2 - 2.2 sec) modulo sps period (25ns)

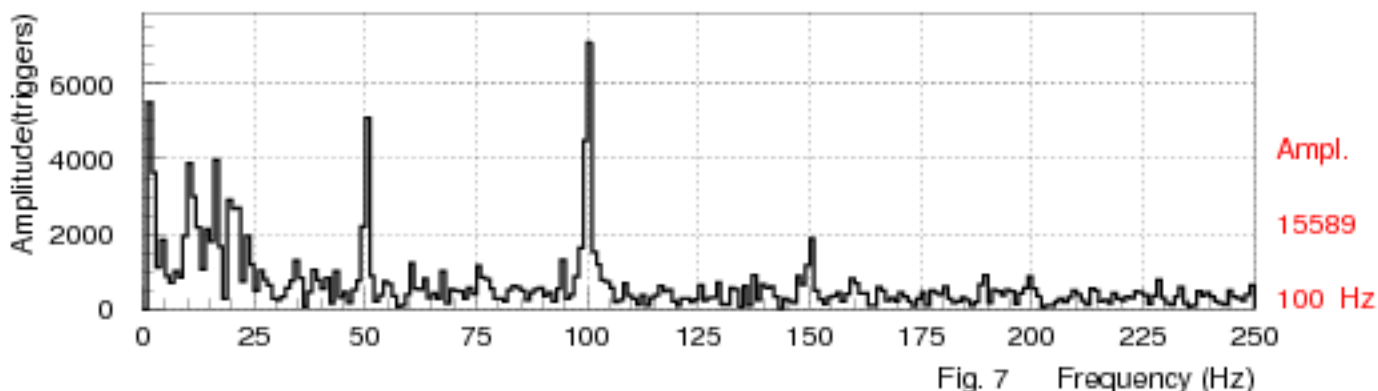


Fig. 7 Frequency (Hz)

Trigger Time Hit Intensity Distributions

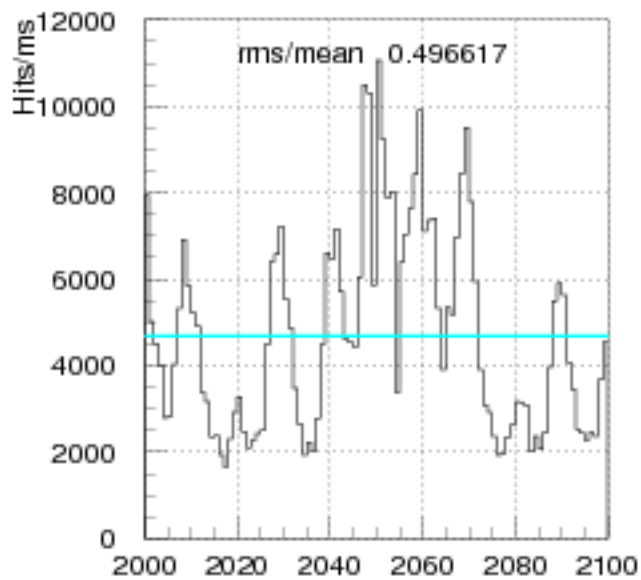


Fig 9a Trigger time (ms)

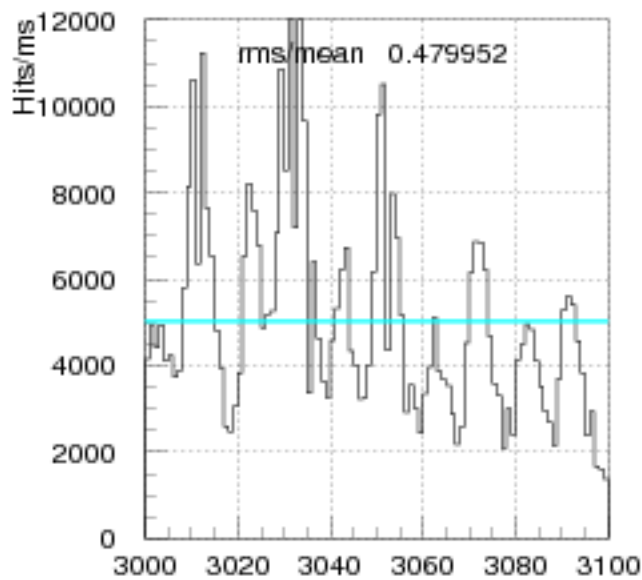


Fig 9b Trigger time (ms)

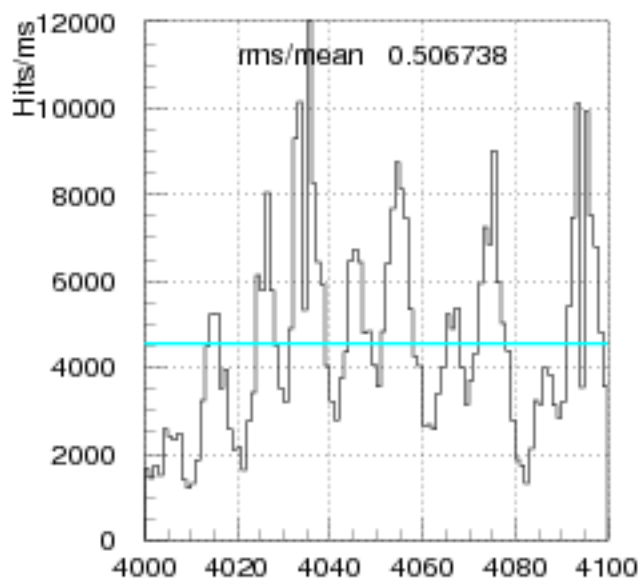


Fig 9c Trigger time (ms)

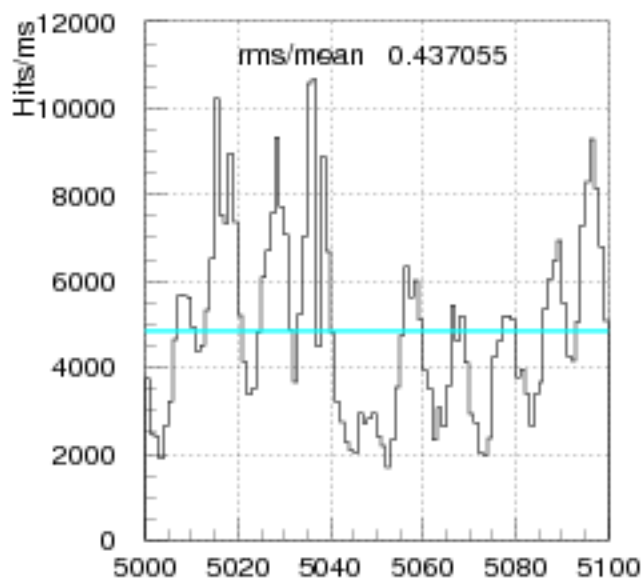
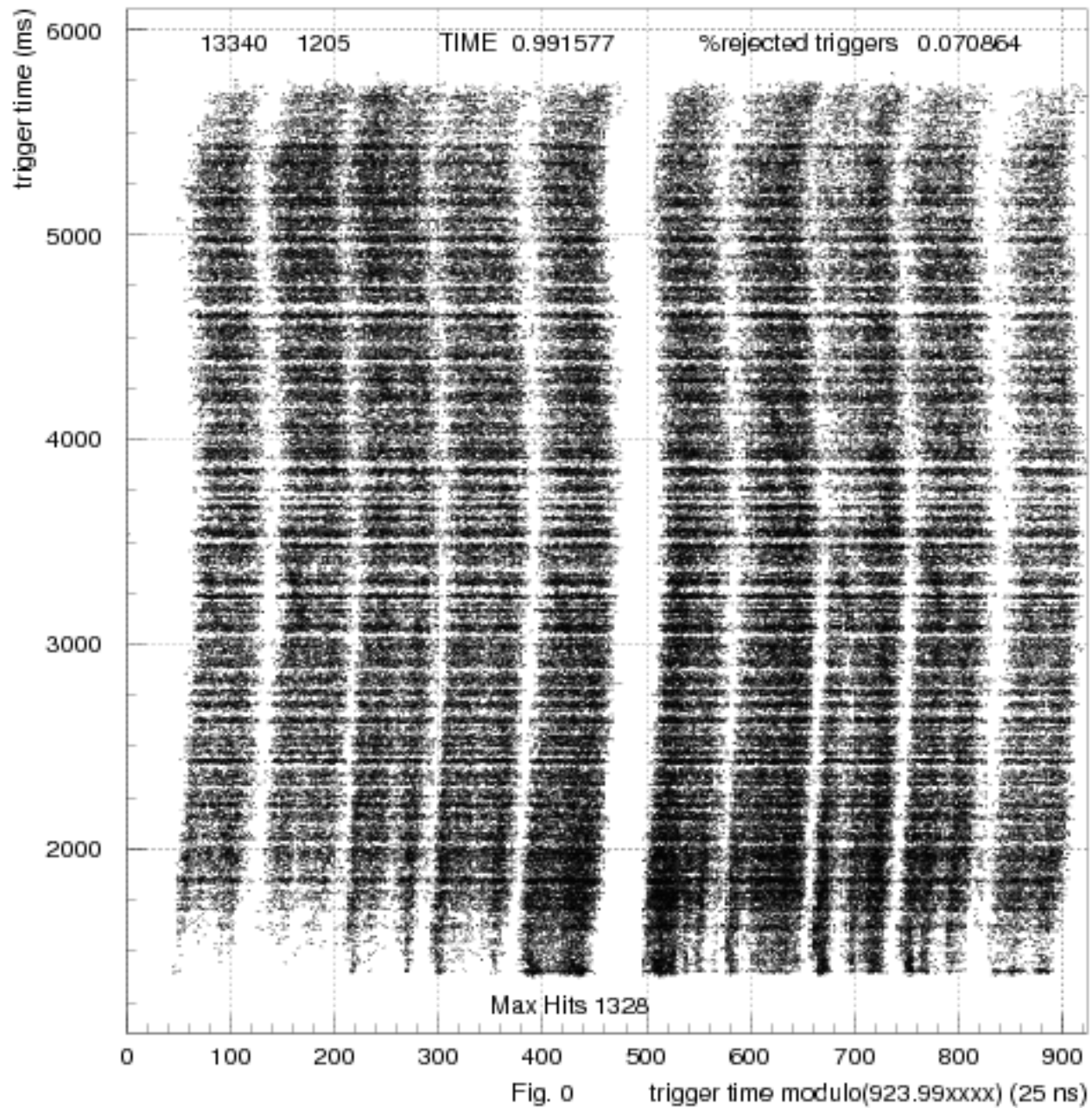
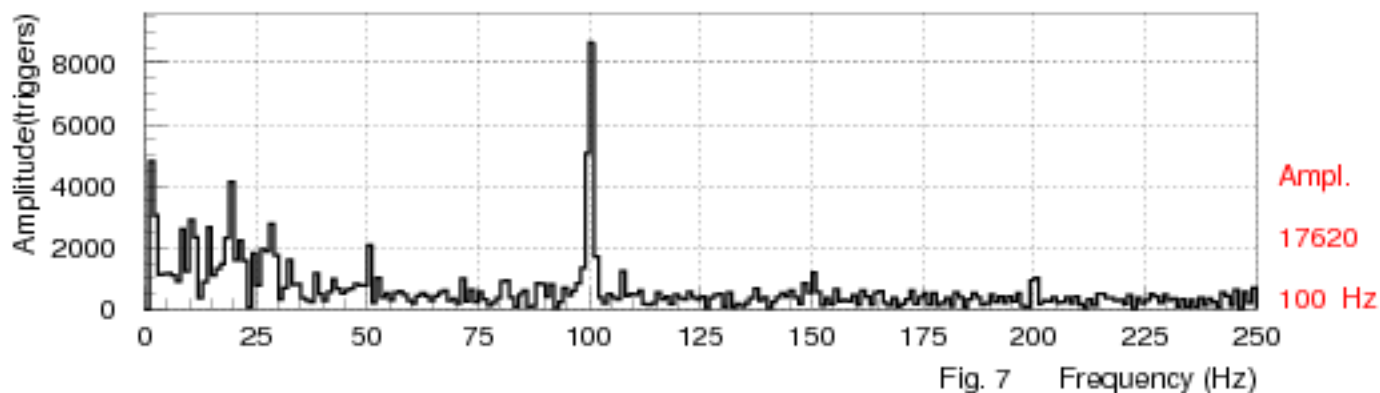
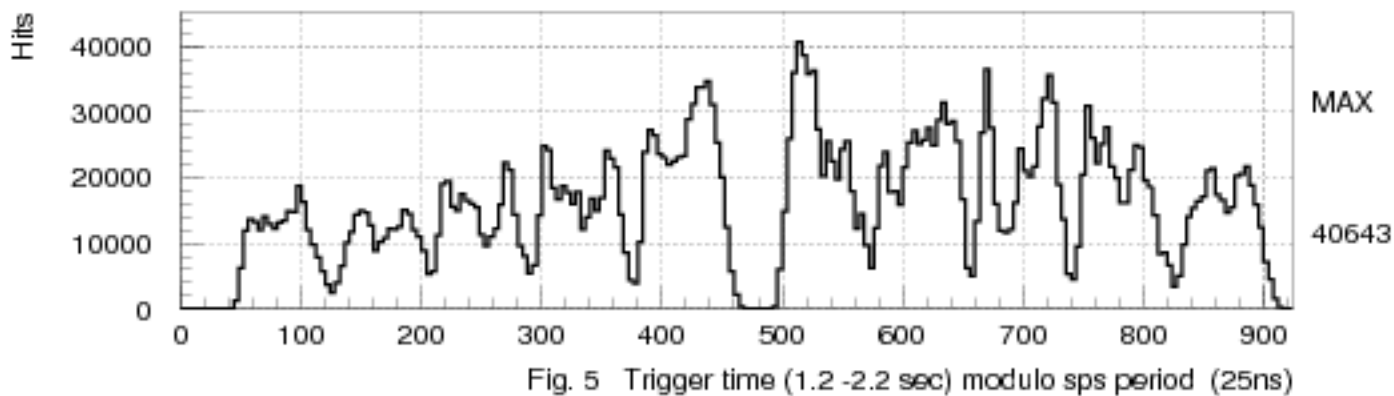
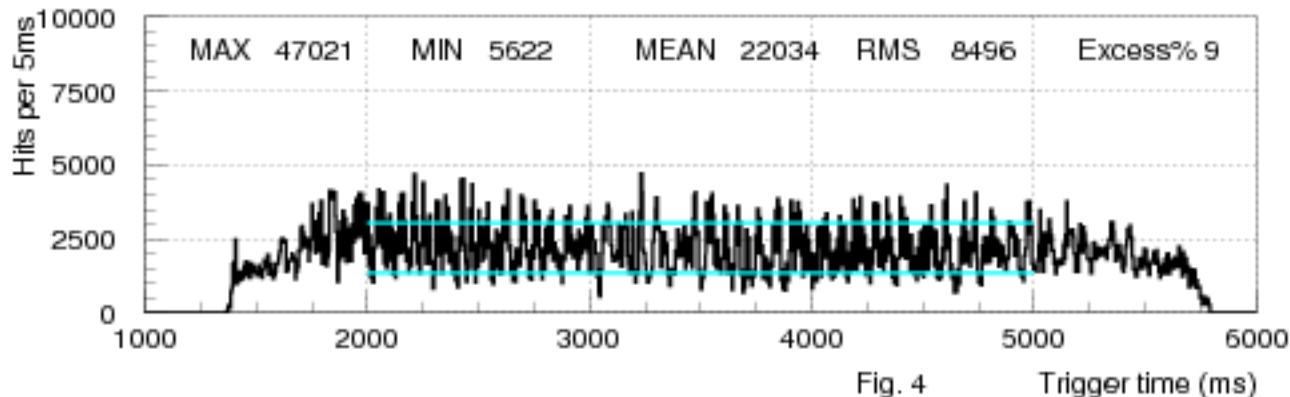


Fig 9d Trigger time (ms)

Hit density for corrected spill (2D spill cut 00, hit cut 110/trigger)



x 10 Hits GTK(1) vs Trigger Time. Fourier Analysis of Spill



Trigger Time Hit Intensity Distributions

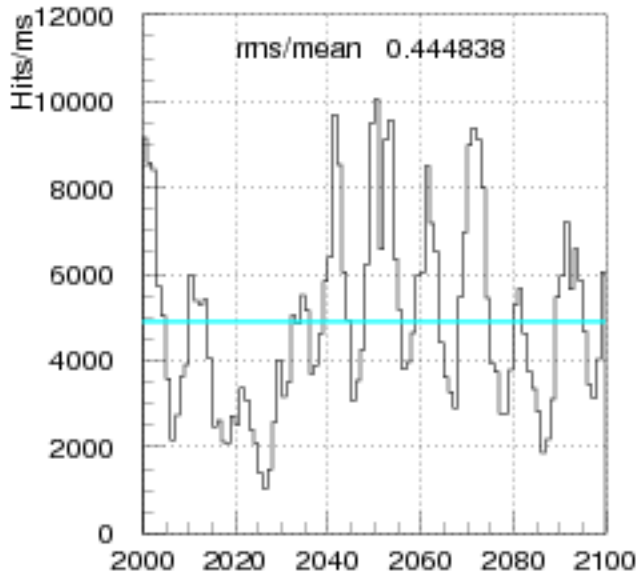


Fig 9a Trigger time (ms)

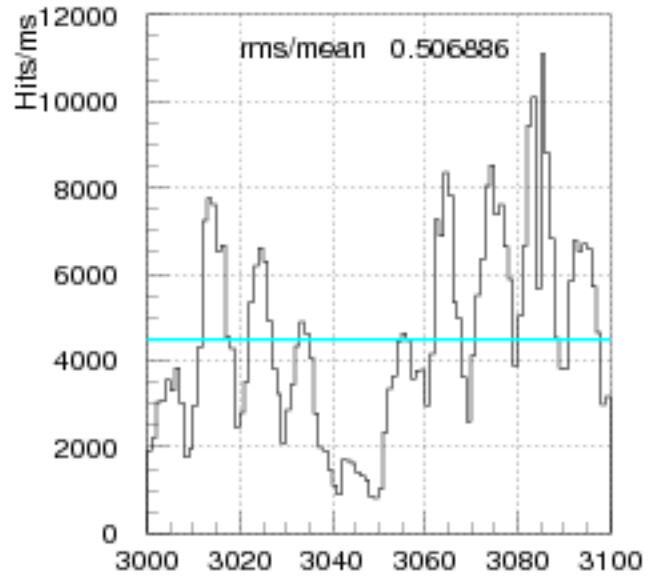


Fig 9b Trigger time (ms)

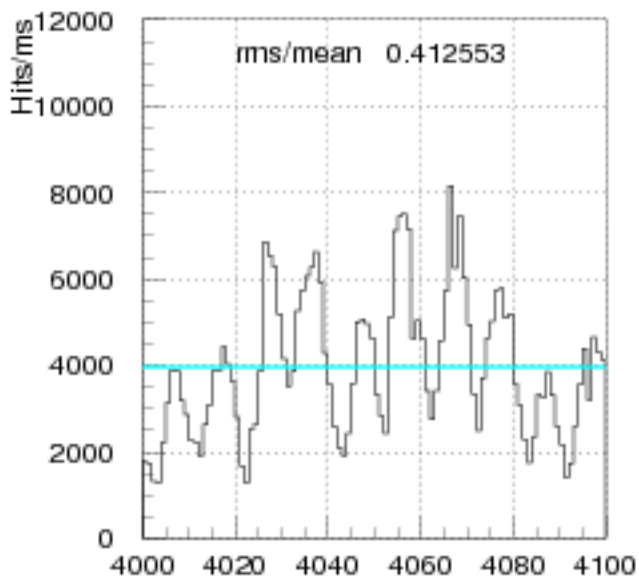


Fig 9c Trigger time (ms)

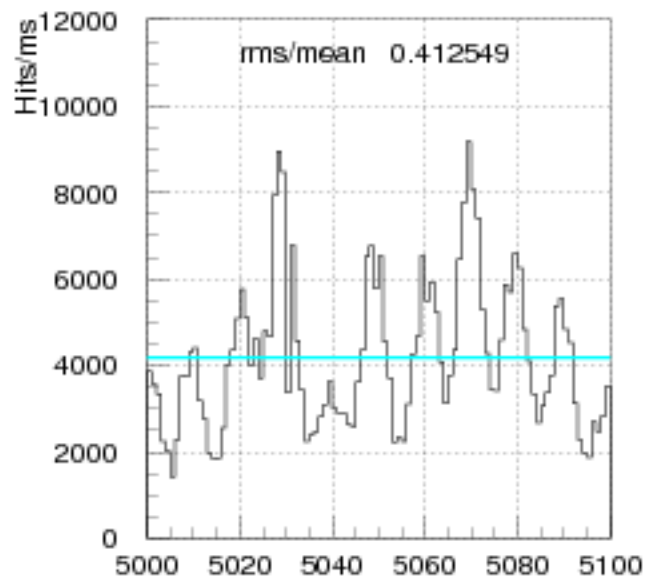
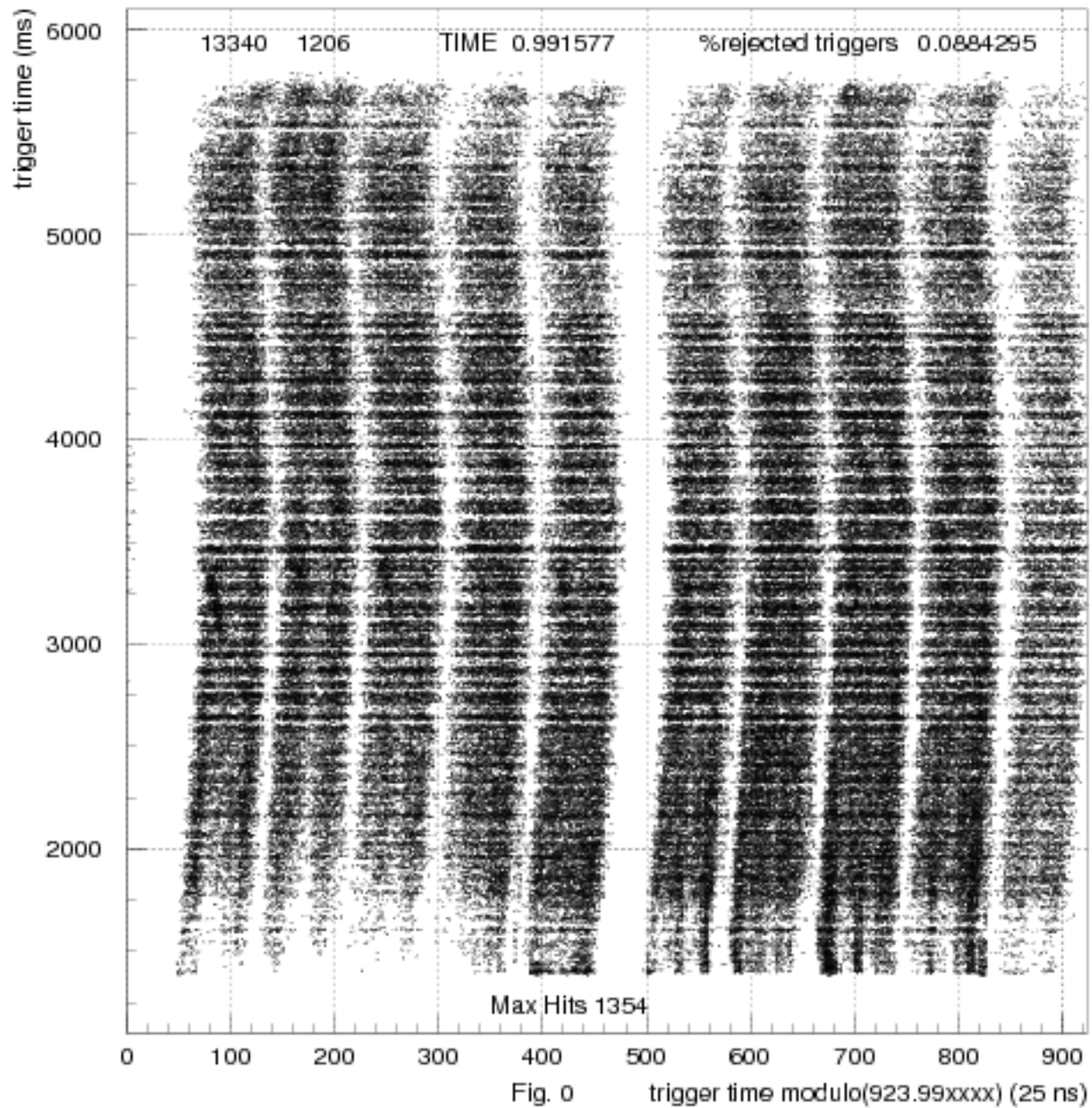
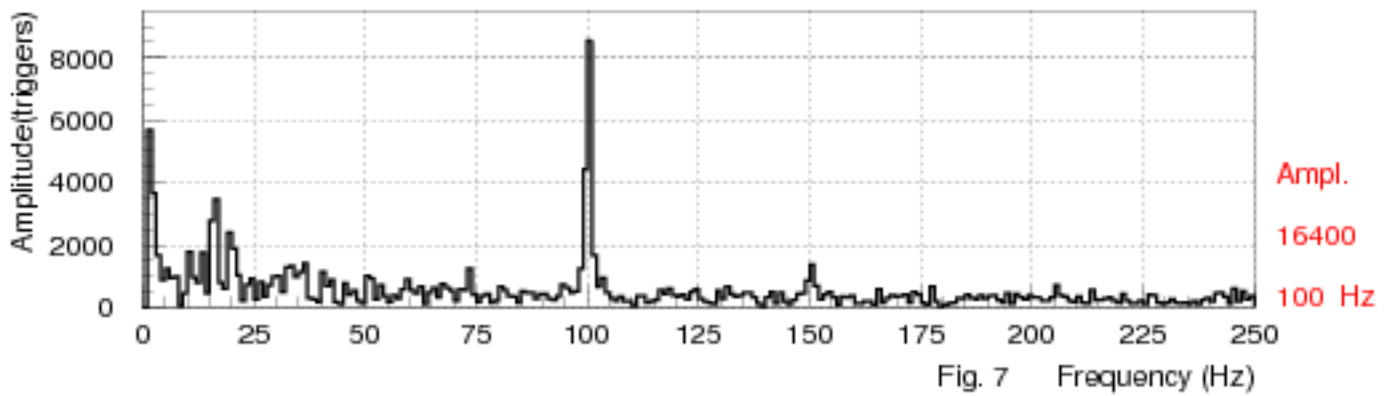
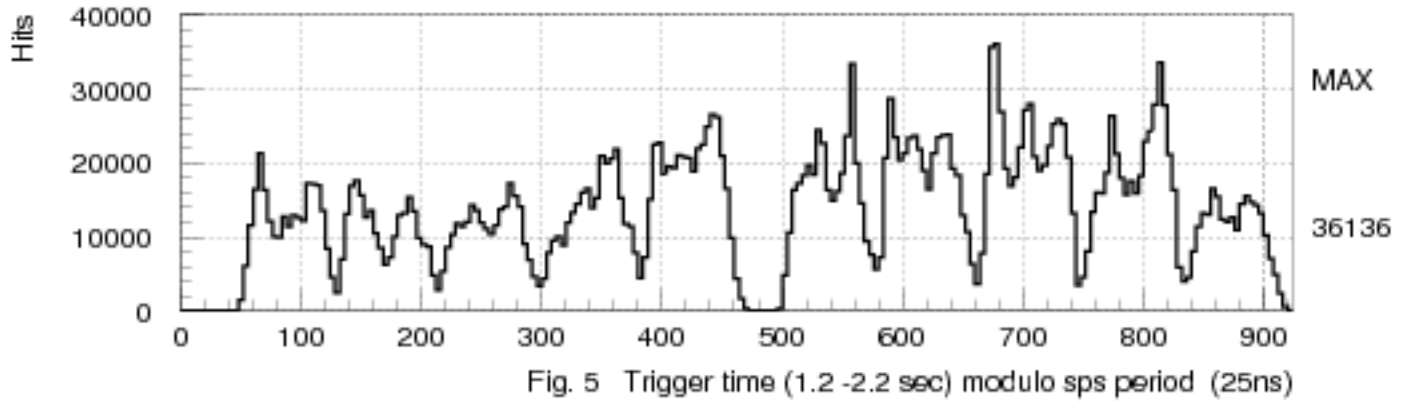
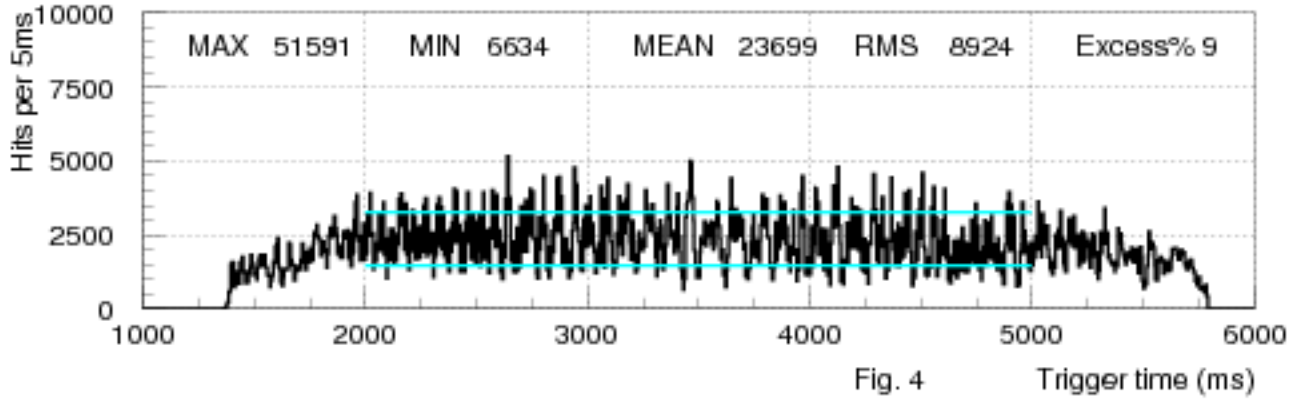


Fig 9d Trigger time (ms)

Hit density for corrected spill (2D spill cut 00, hit cut 110/trigger)



x 10 Hits GTK(1) vs Trigger Time. Fourier Analysis of Spill



Trigger Time Hit Intensity Distributions

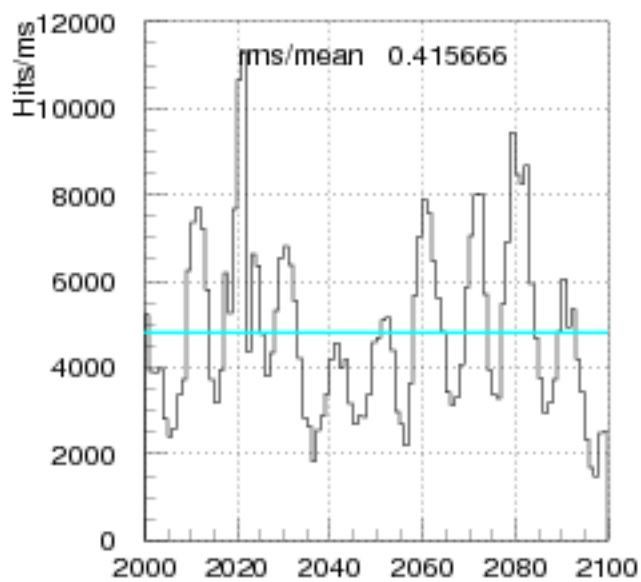


Fig 9a Trigger time (ms)

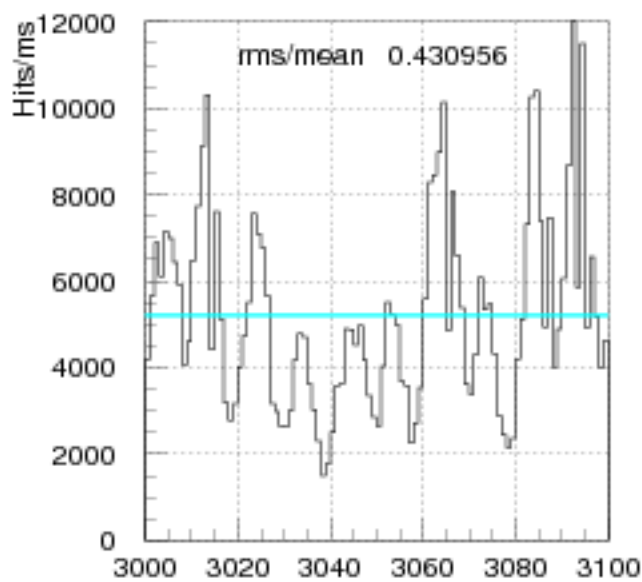


Fig 9b Trigger time (ms)

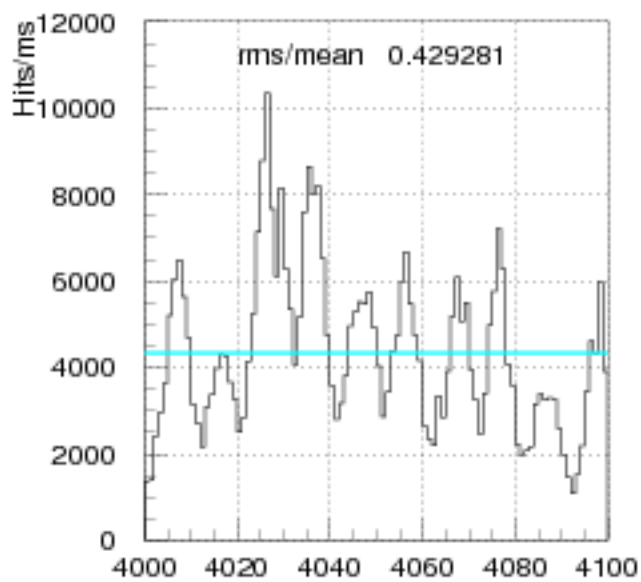


Fig 9c Trigger time (ms)

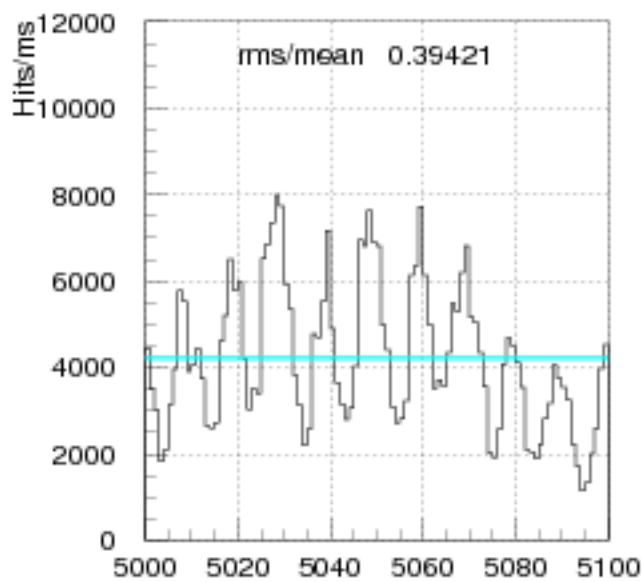
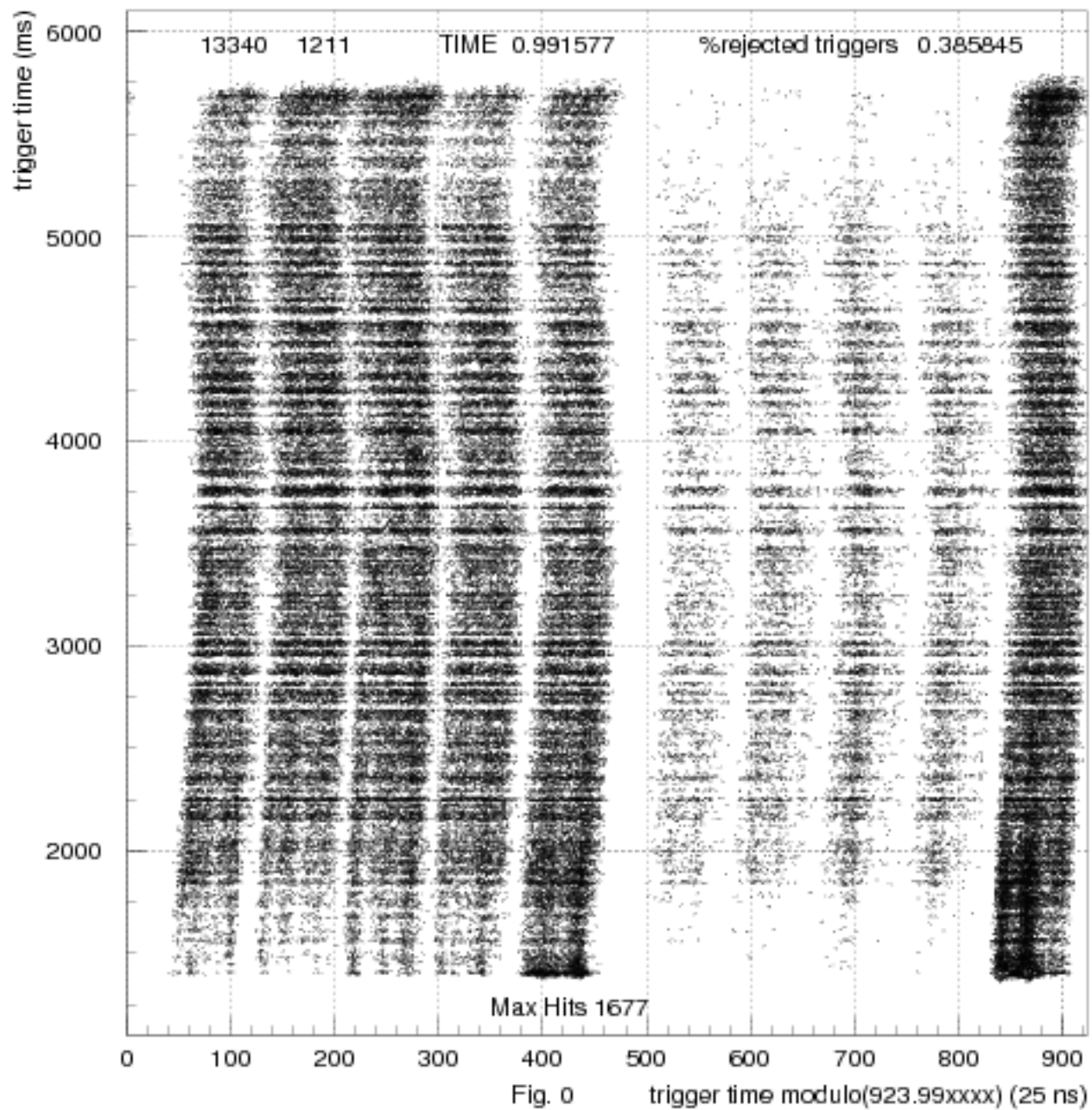


Fig 9d Trigger time (ms)

Hit density for corrected spill (2D spill cut 00, hit cut 110/trigger)



Hits GTK(1) vs Trigger Time. Fourier Analysis of Spill

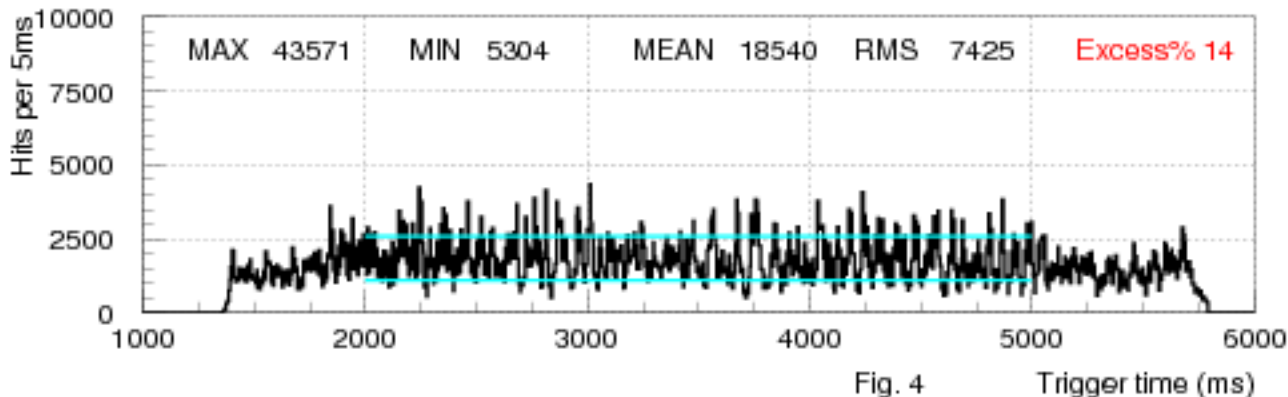


Fig. 4 Trigger time (ms)

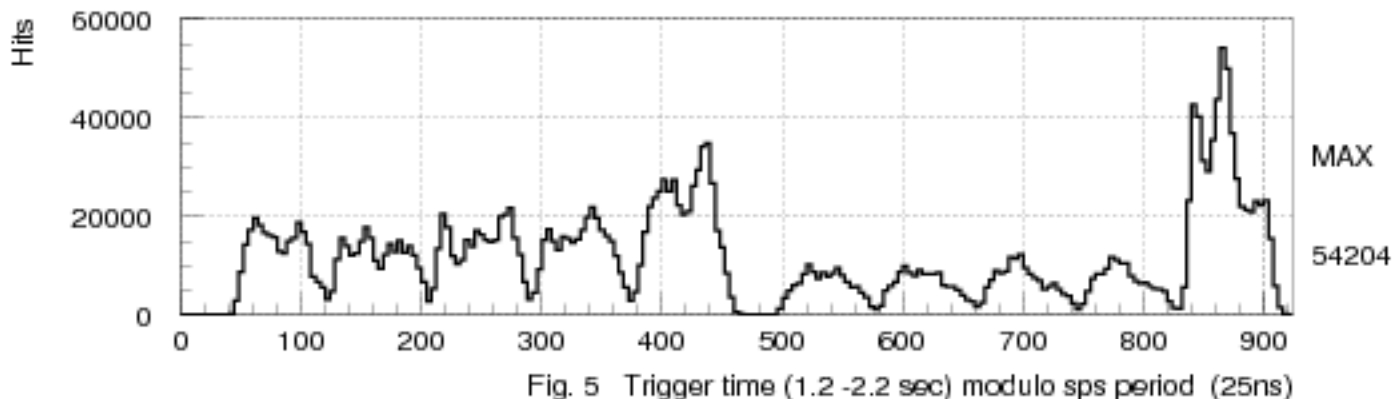


Fig. 5 Trigger time (1.2 - 2.2 sec) modulo sps period (25ns)

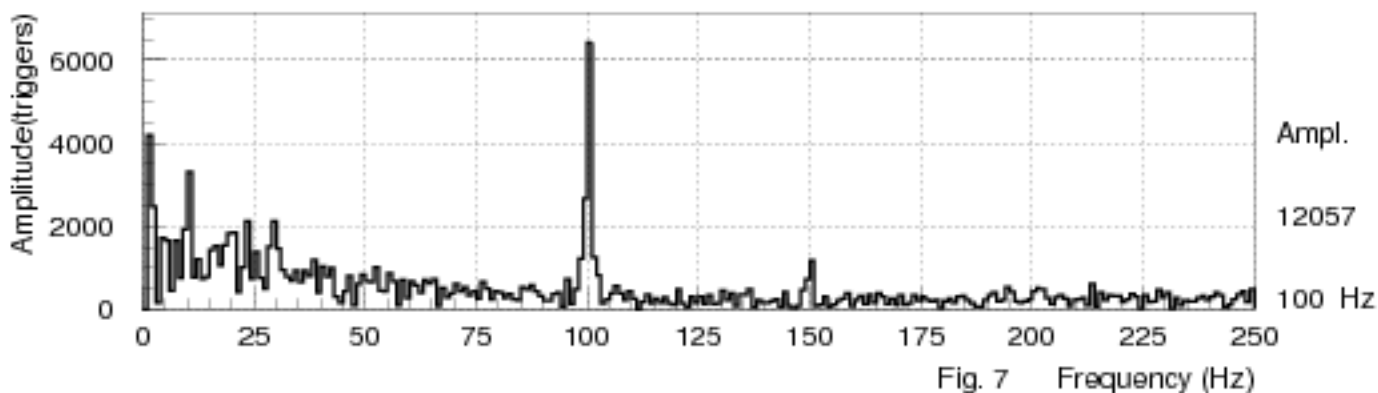
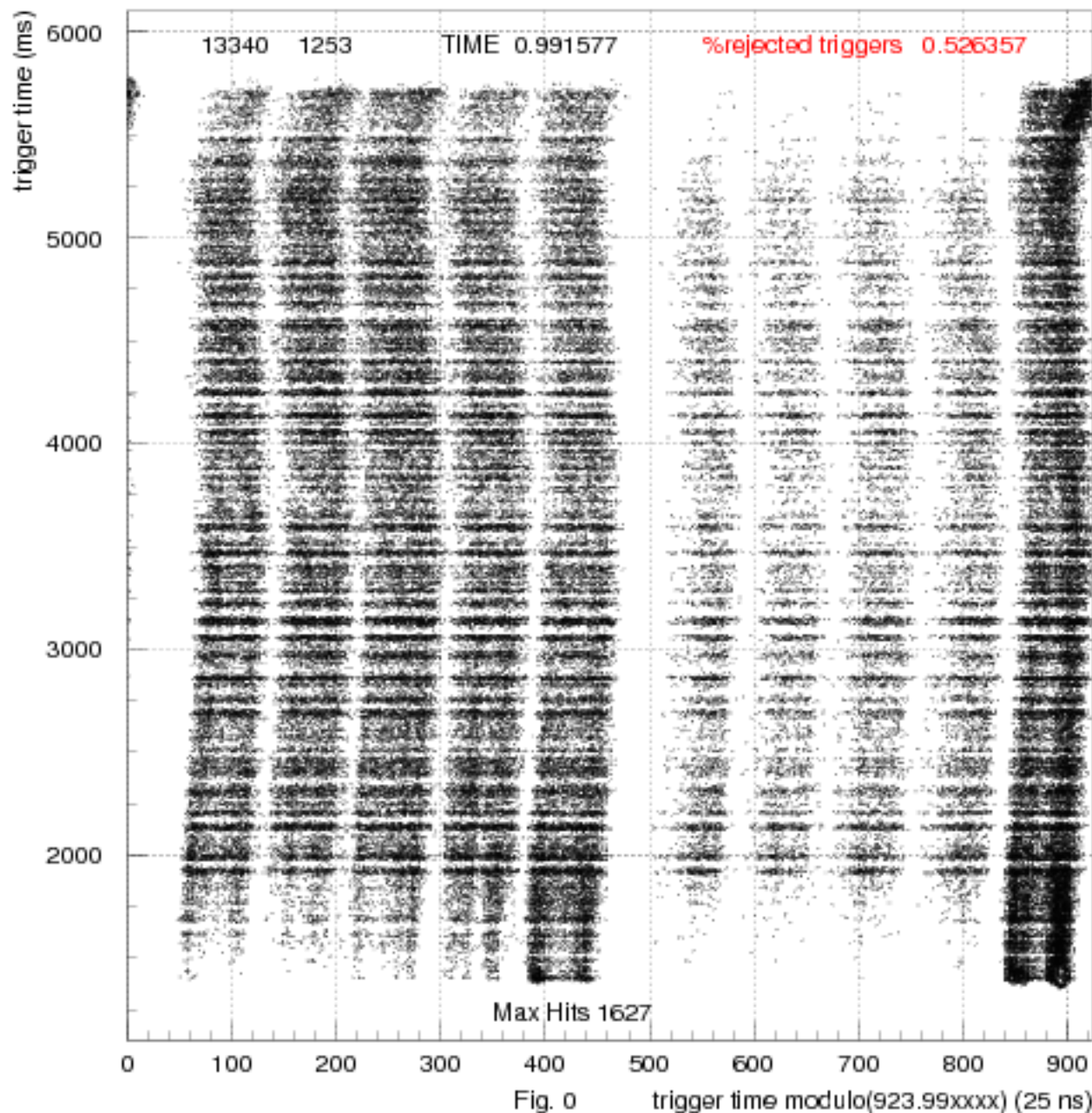


Fig. 7 Frequency (Hz)

Hit density for corrected spill (2D spill cut 00, hit cut 110/trigger)



Hits GTK(1) vs Trigger Time. Fourier Analysis of Spill

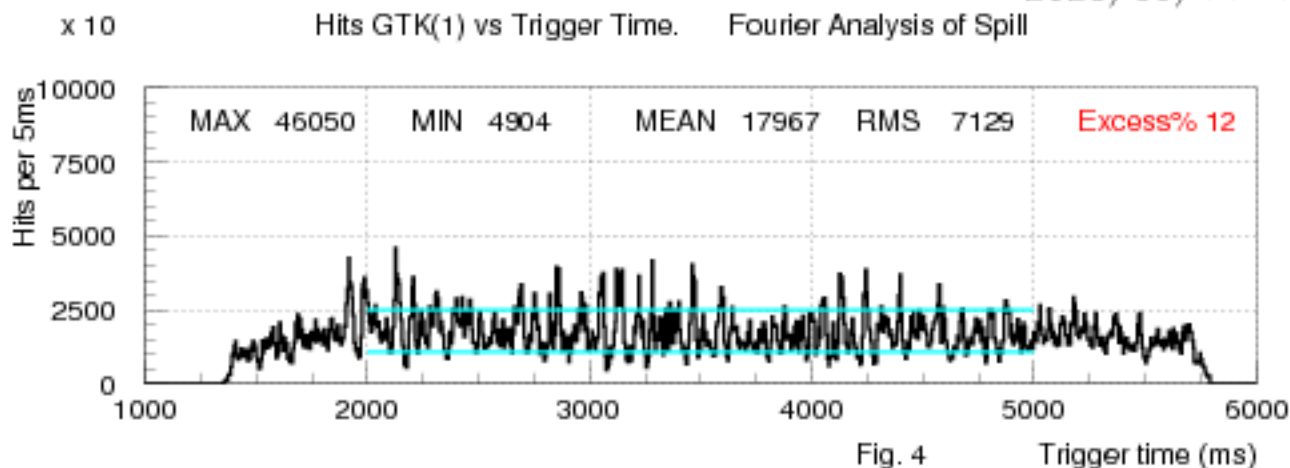


Fig. 4 Trigger time (ms)

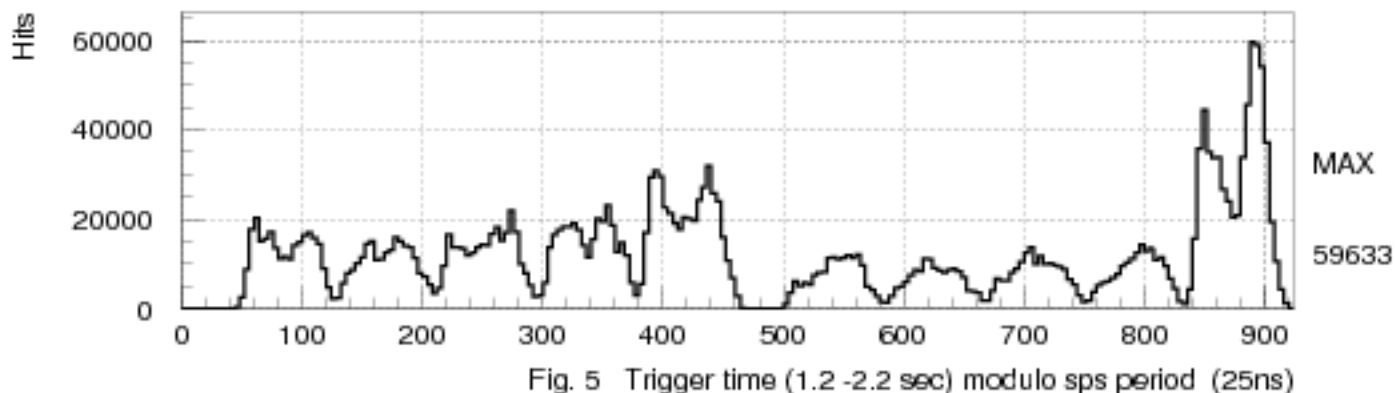


Fig. 5 Trigger time (1.2 - 2.2 sec) modulo sps period (25ns)

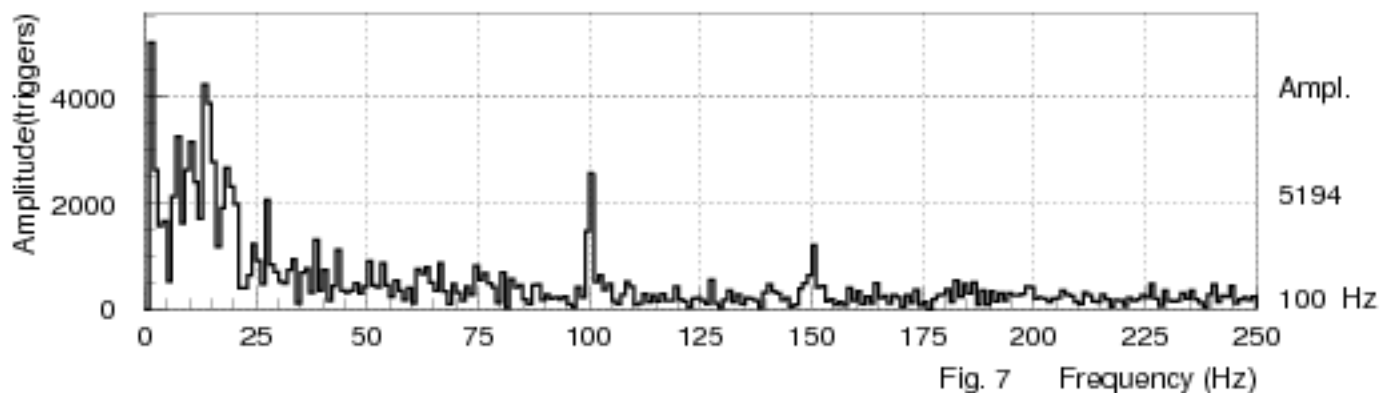
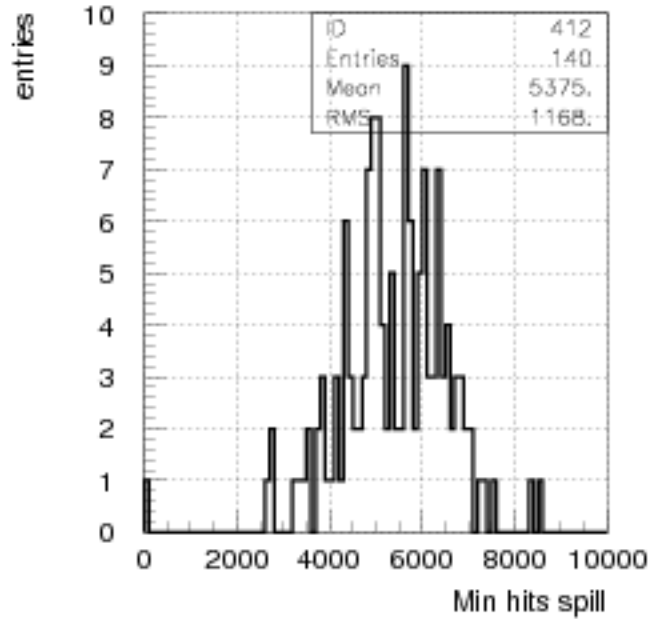
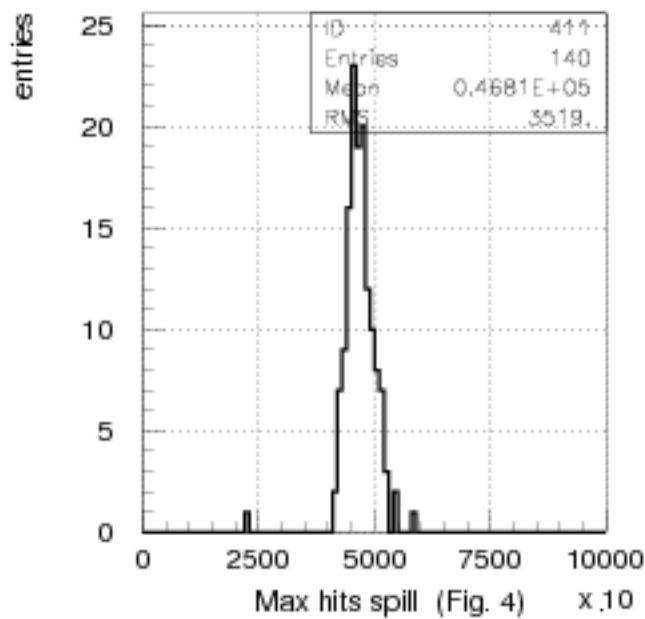
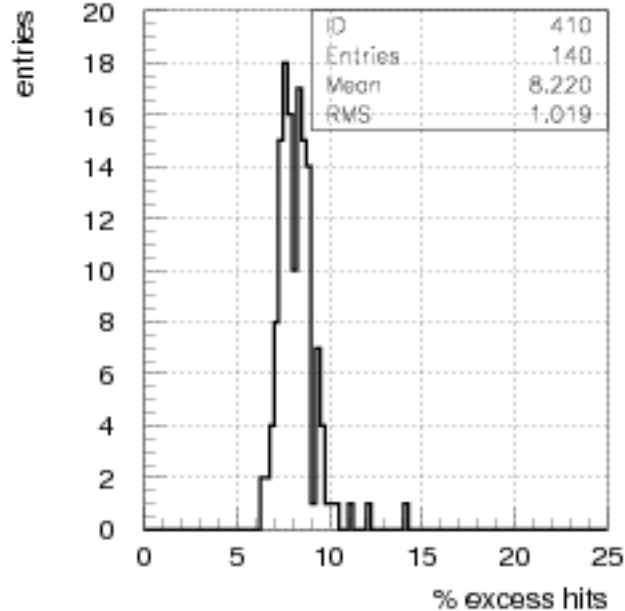
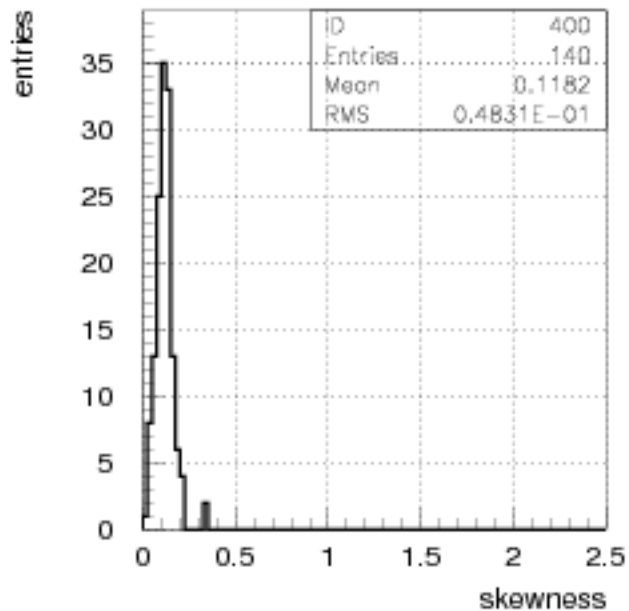


Fig. 7 Frequency (Hz)

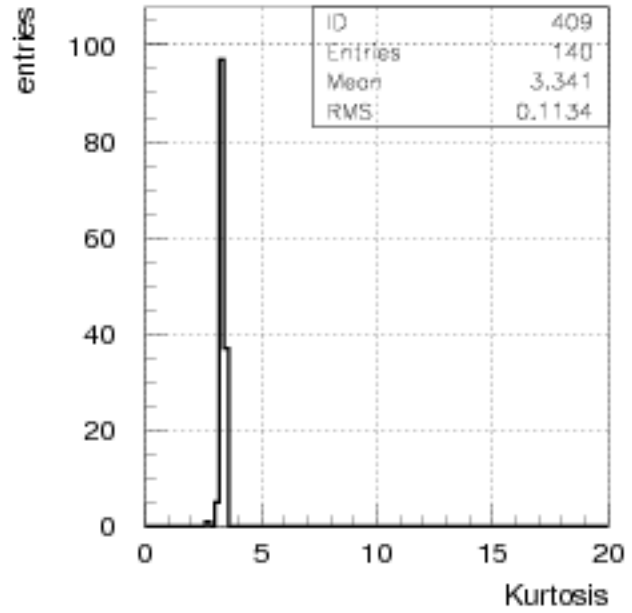
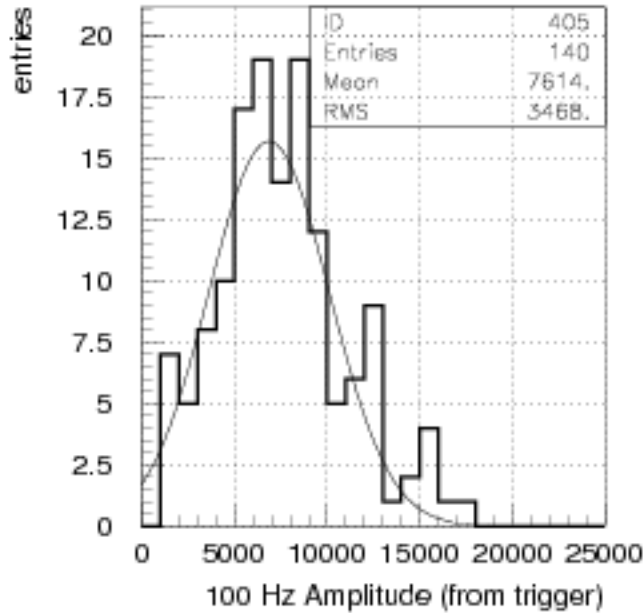
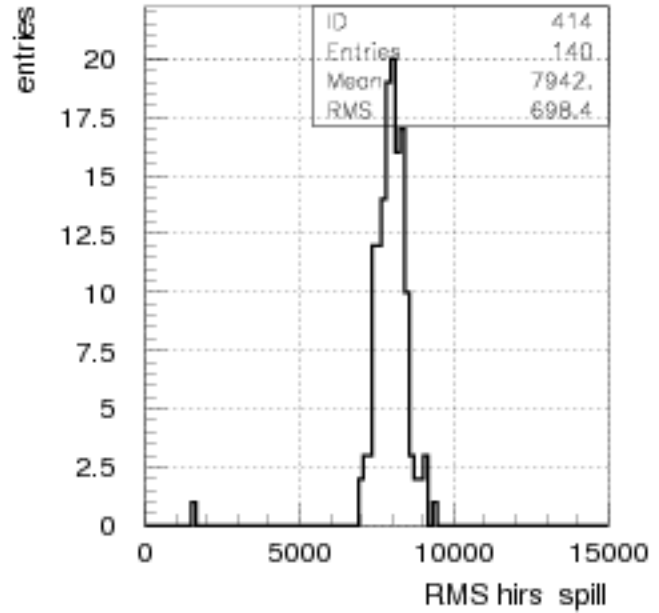
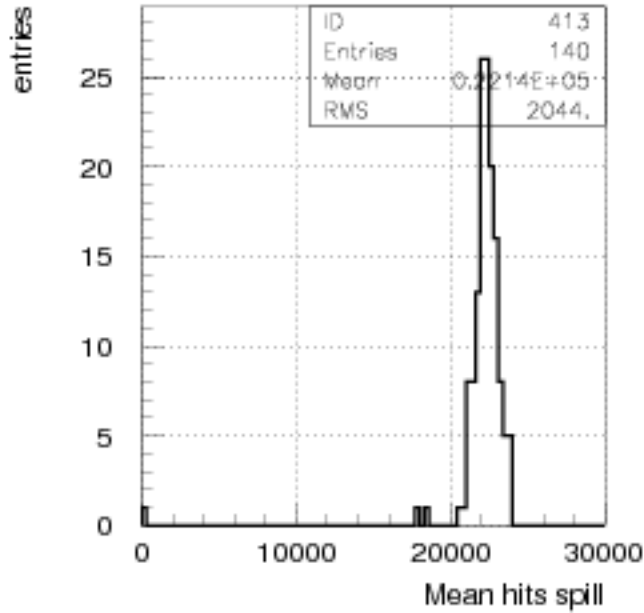
2023/09/14 11.46

BQI for hits in GTK(1)

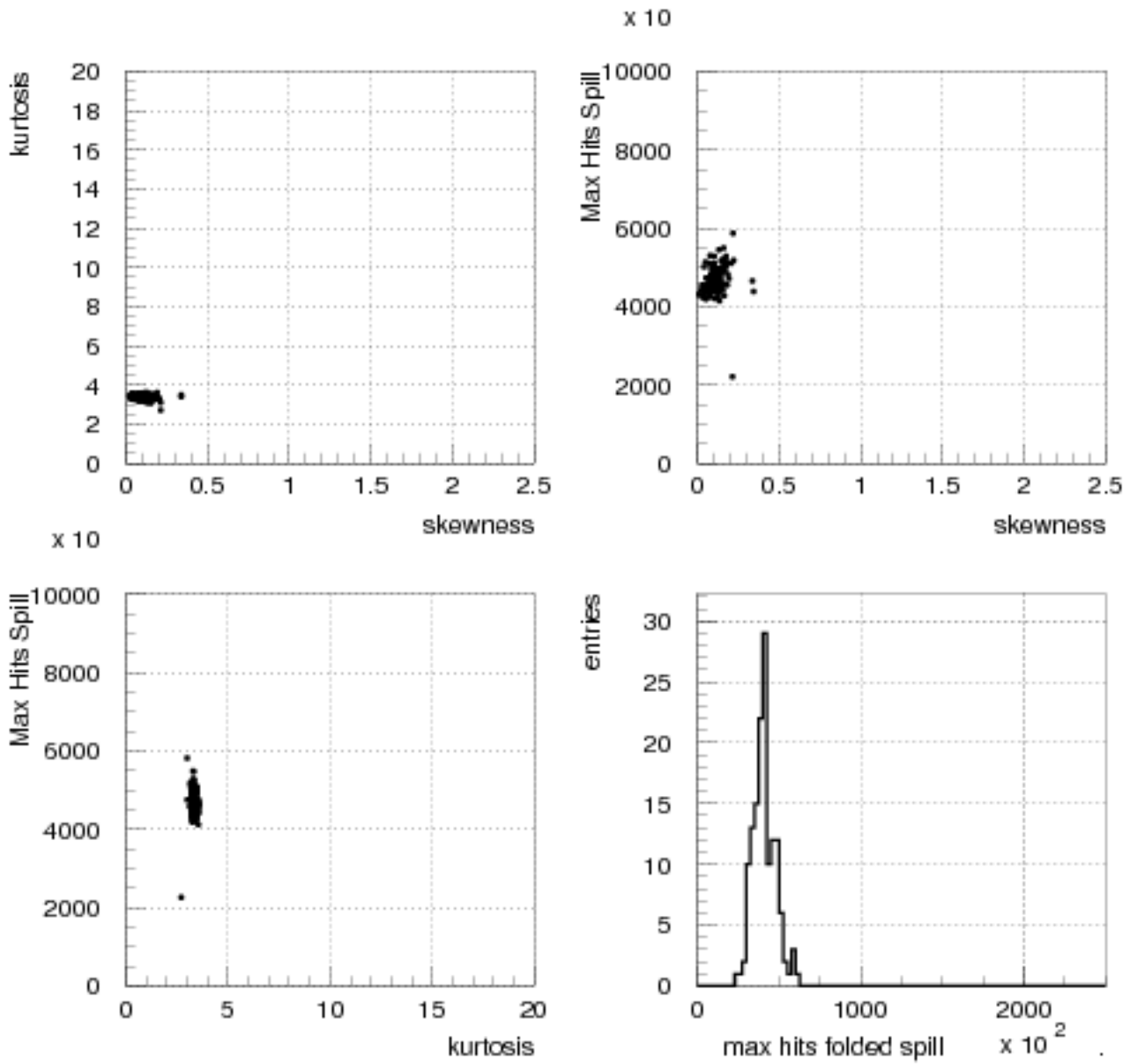


2023/09/14 11.46

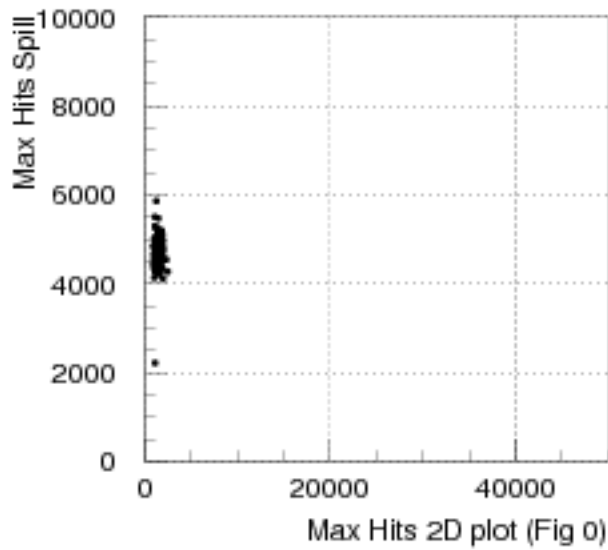
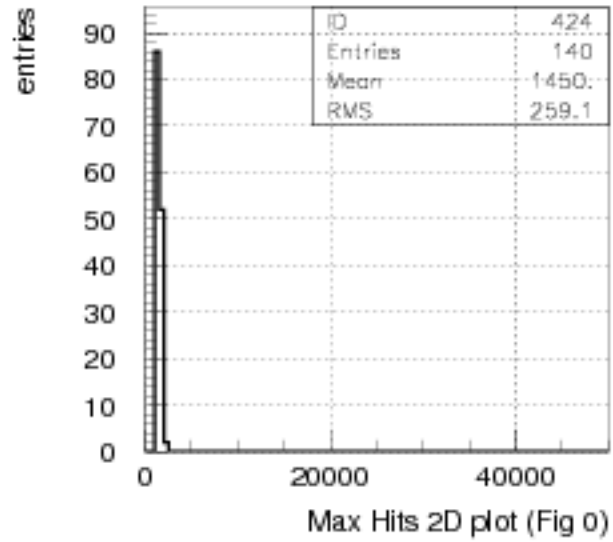
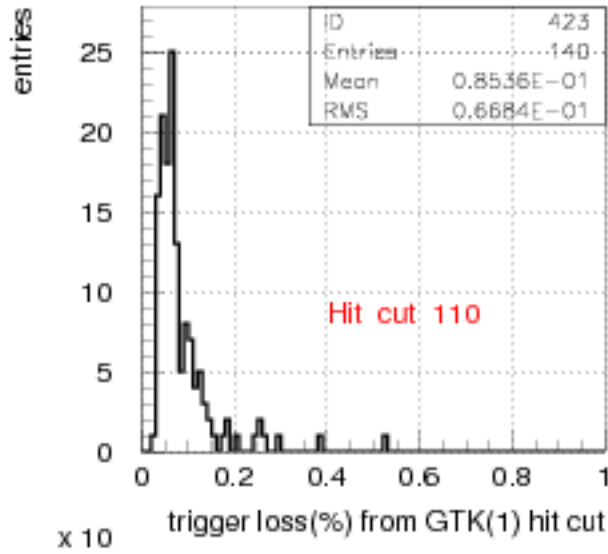
BQI for hits in GTK(1)



BQI for hits in GTK(1)



BQI for hits in GTK(1)



BQI for hits in GTK(1)

