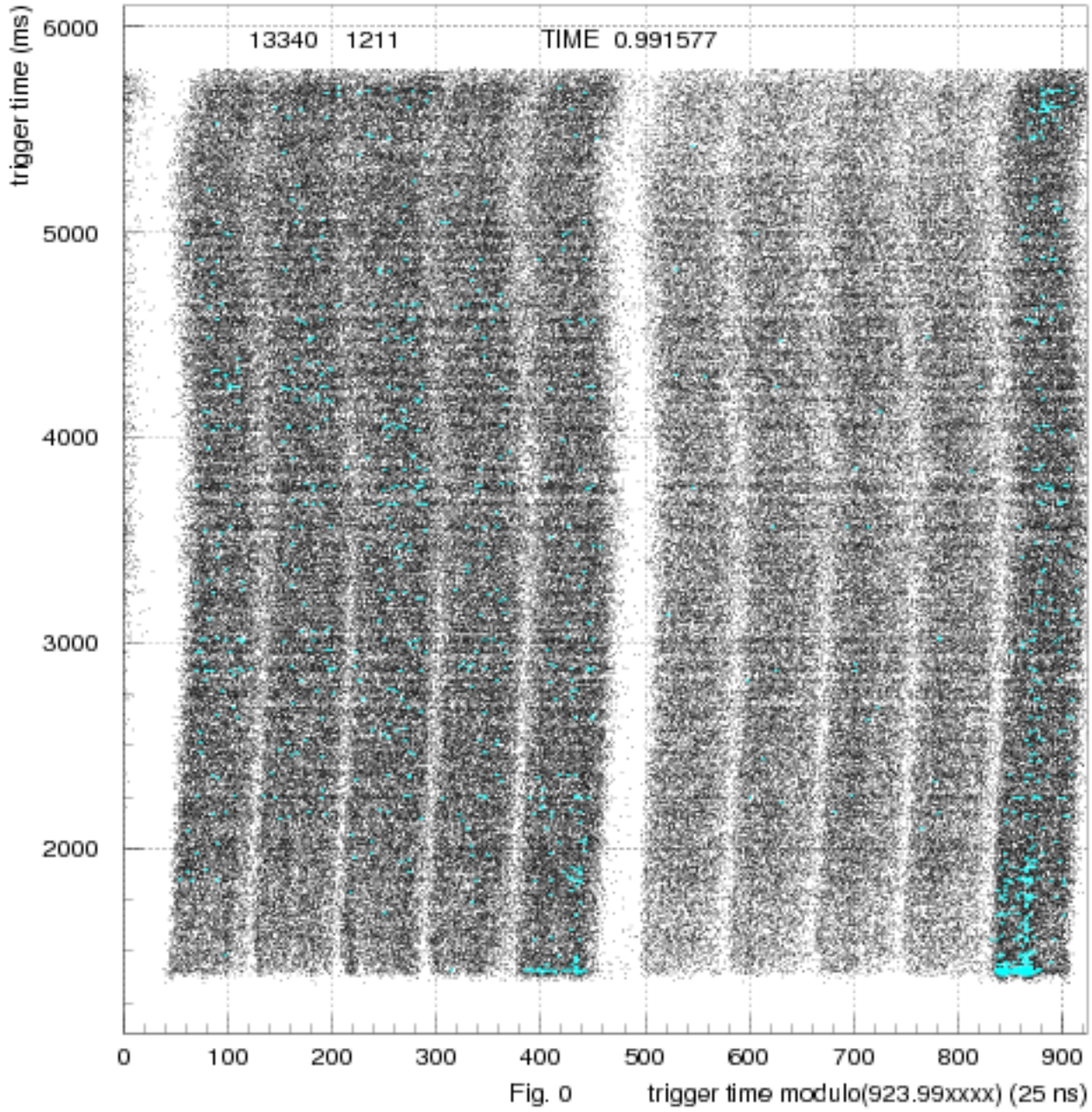
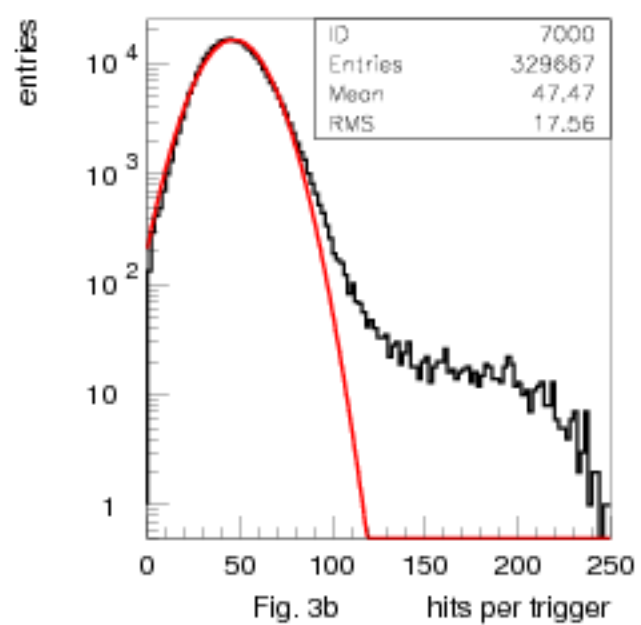
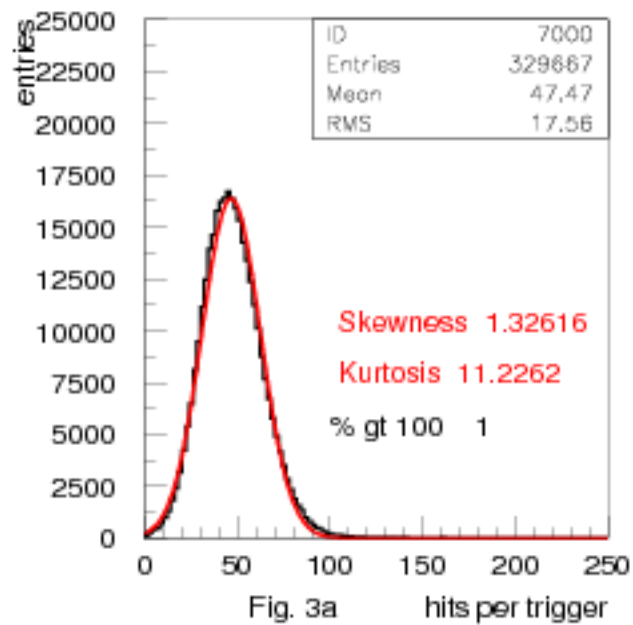
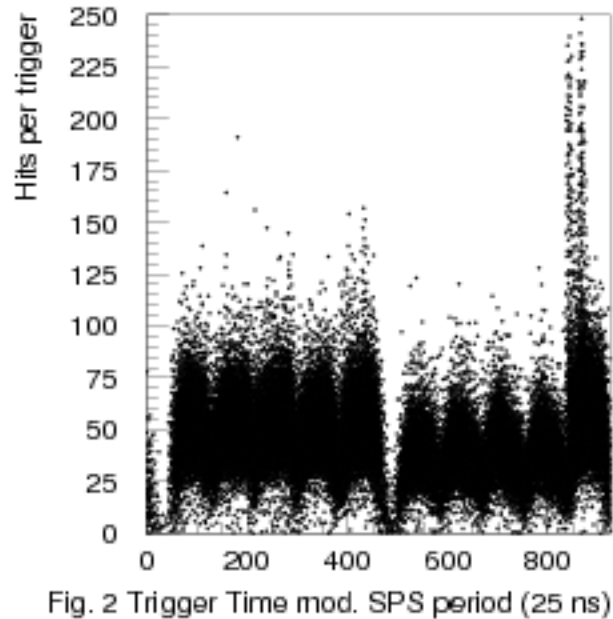
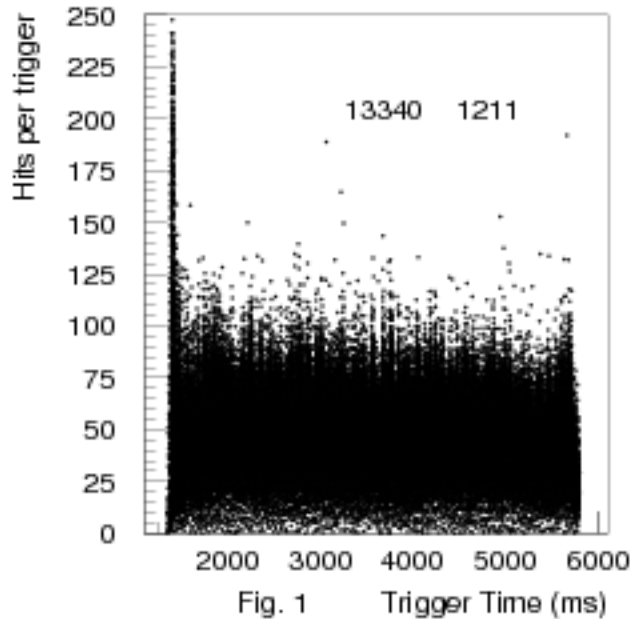


Corrected Spill



Hits GTK(1) vs TriggerTime, Trigger Time modulo SPS period



Spill projections and Fourier Analysis

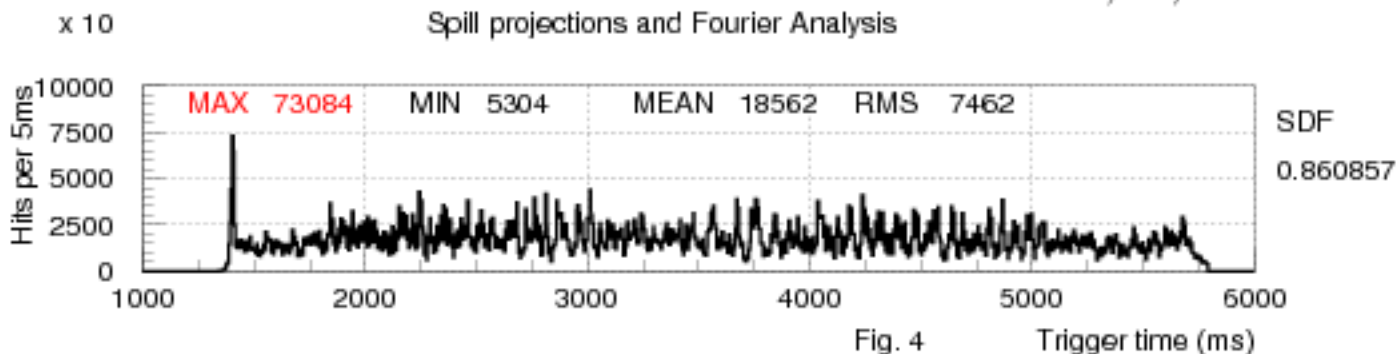


Fig. 4 Trigger time (ms)

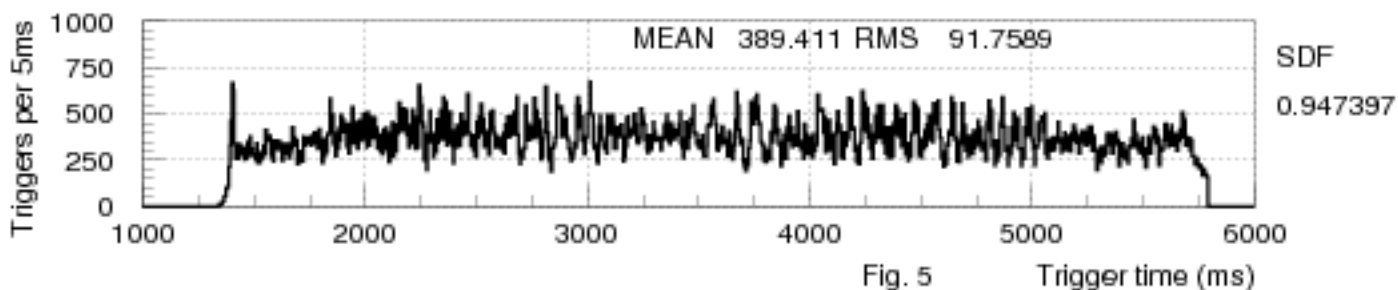


Fig. 5 Trigger time (ms)

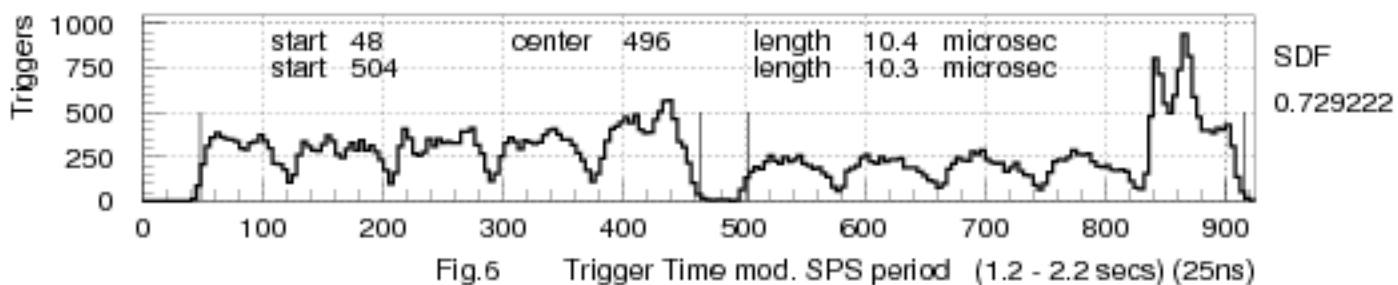


Fig.6 Trigger Time mod. SPS period (1.2 - 2.2 secs) (25ns)

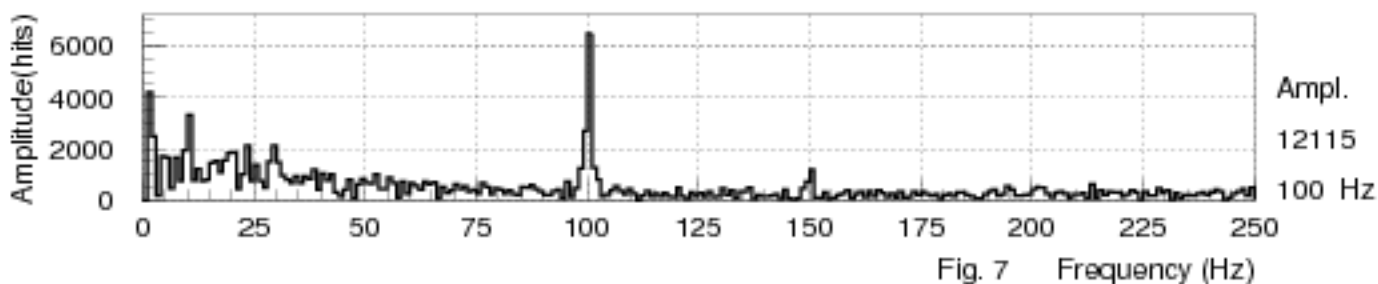


Fig. 7 Frequency (Hz)