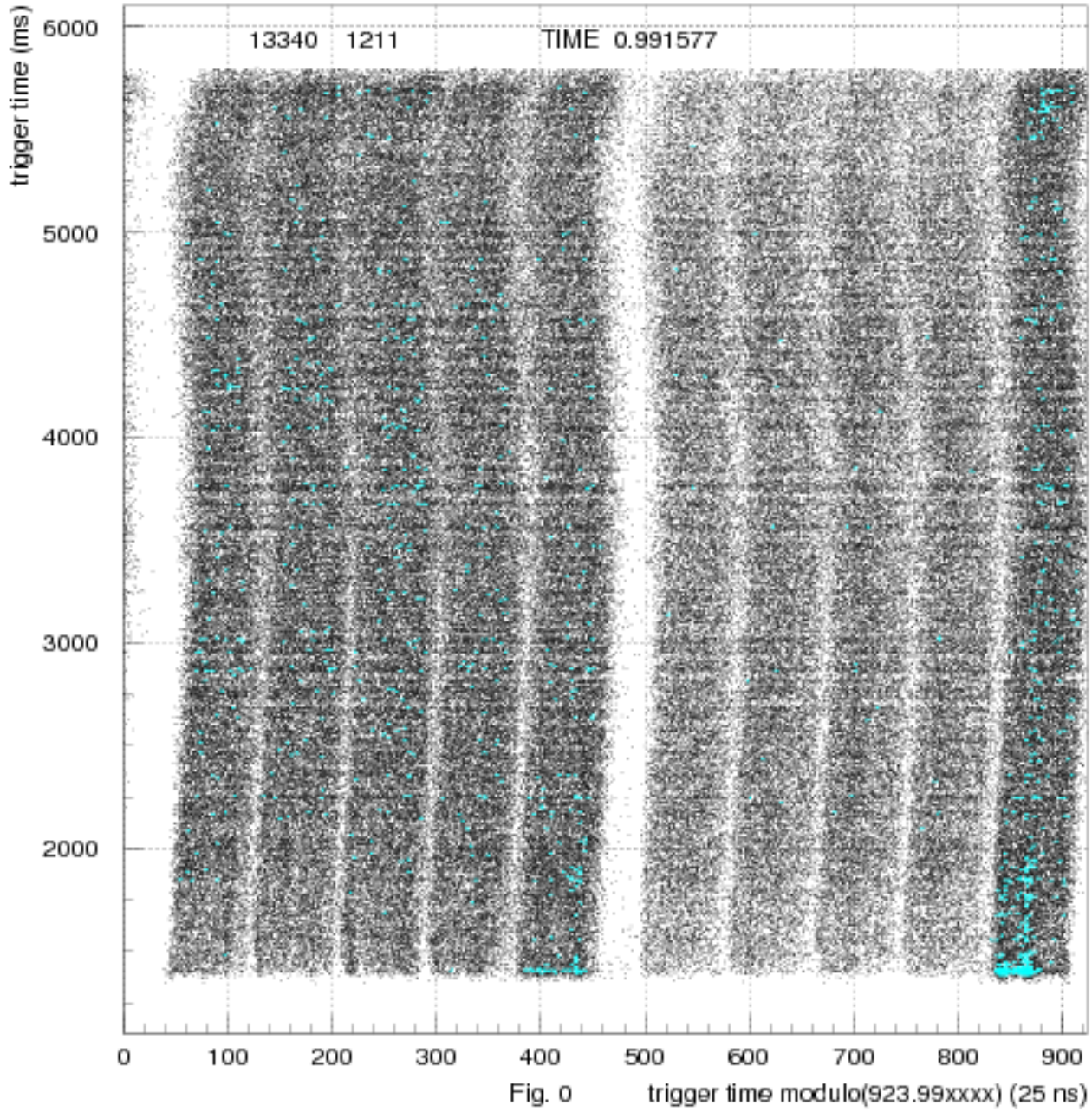
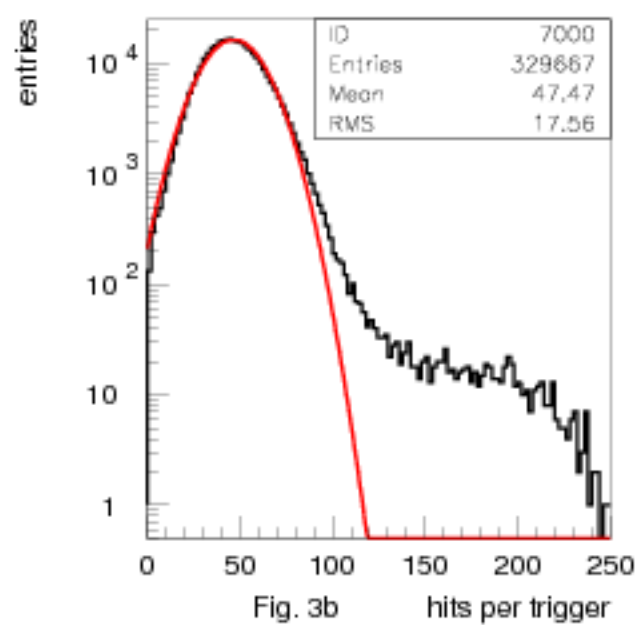
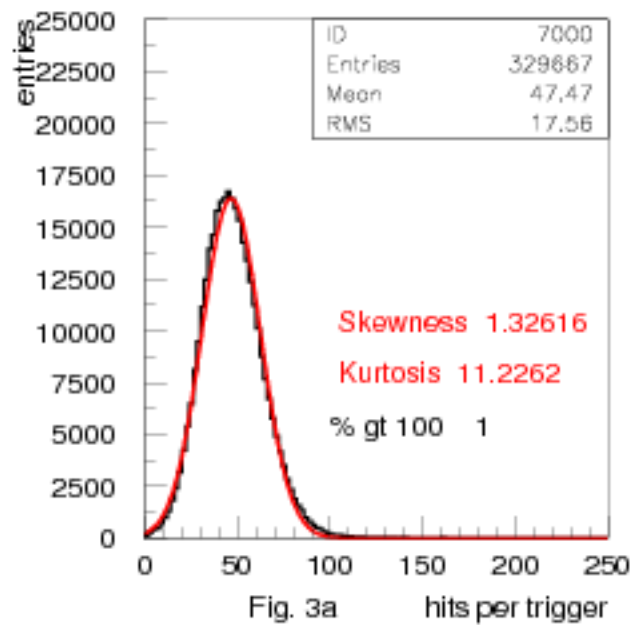
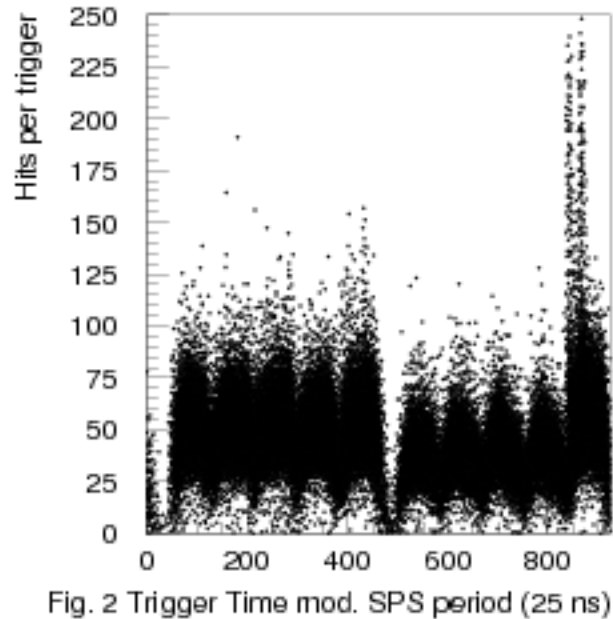
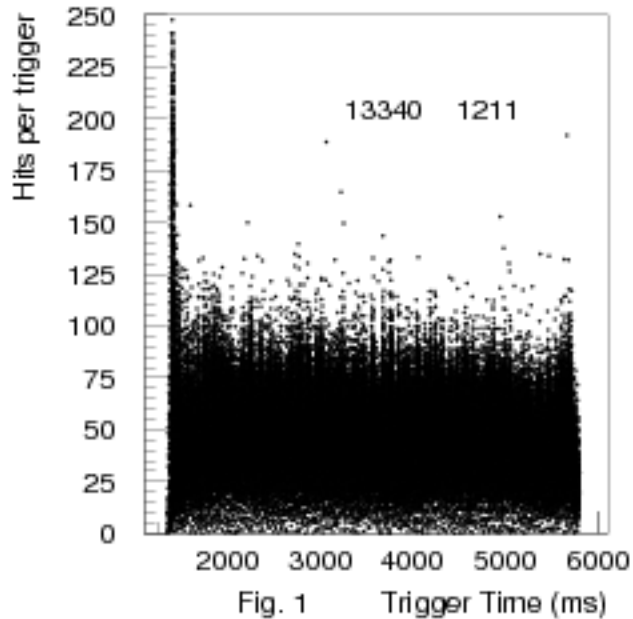


Corrected Spill



Hits GTK(1) vs TriggerTime, Trigger Time modulo SPS period



Comparison of GTK(1) hits /5ms with triggers /5 ms

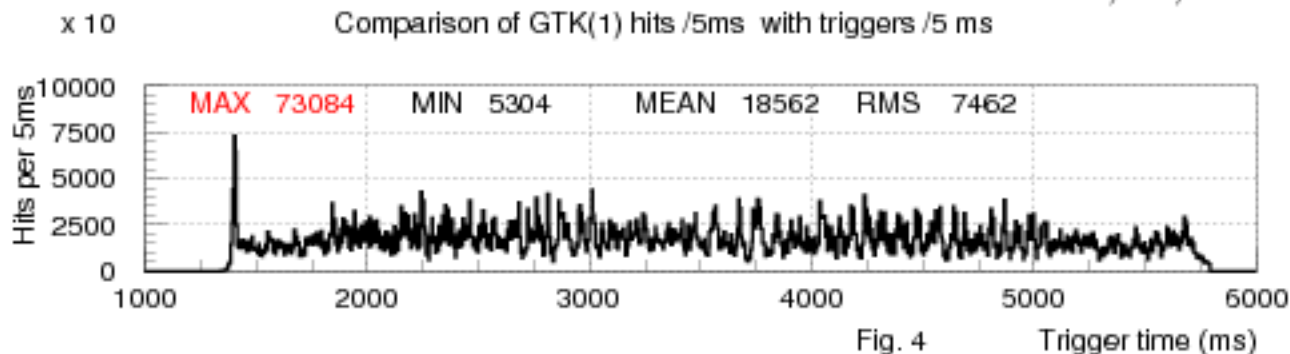


Fig. 4 Trigger time (ms)

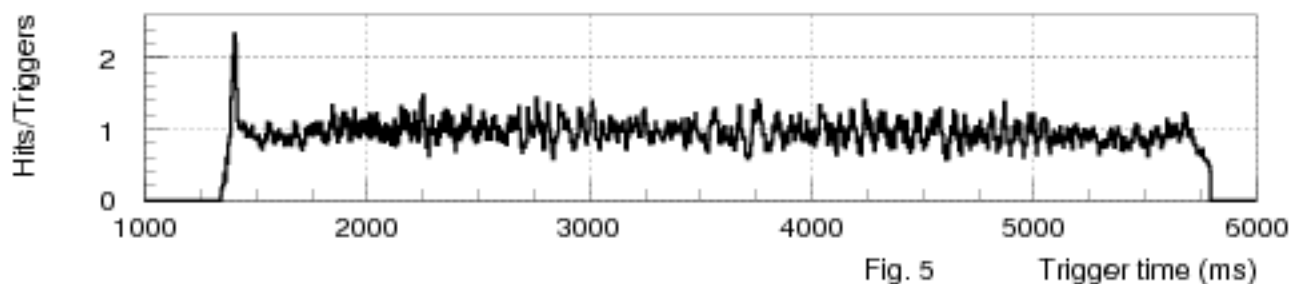


Fig. 5 Trigger time (ms)

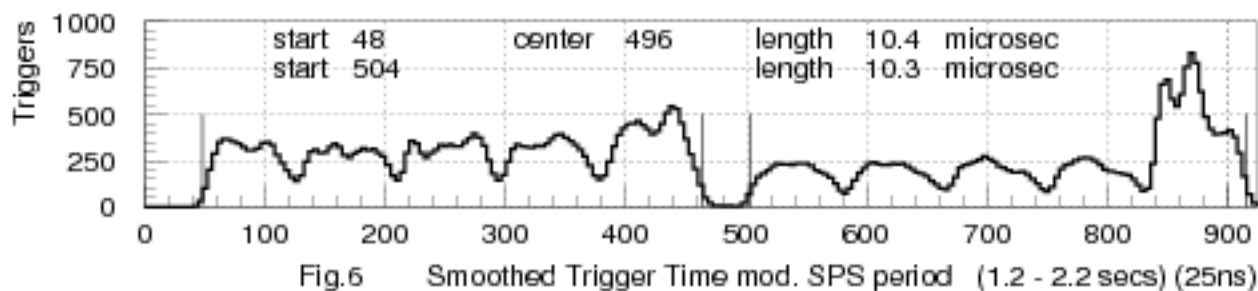


Fig.6 Smoothed Trigger Time mod. SPS period (1.2 - 2.2 secs) (25ns)

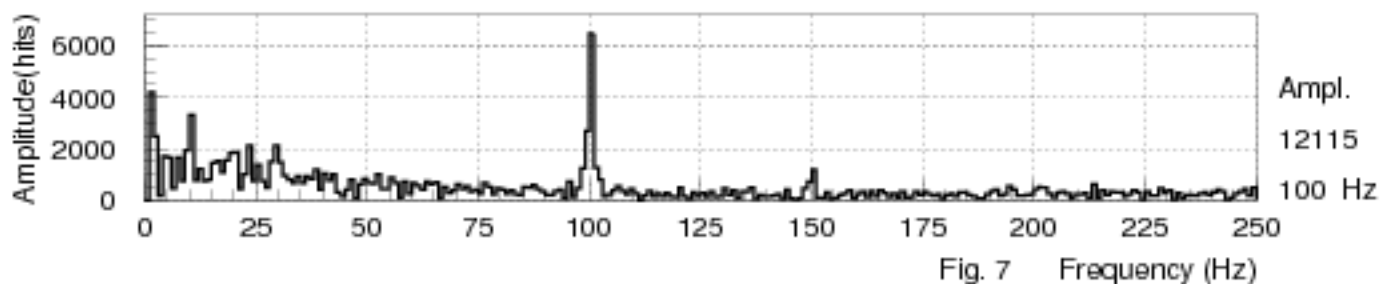


Fig. 7 Frequency (Hz)

